

## **Preferred Concept Alternatives being design for the Nason Creek Floodplain River Mile 3.4 to 4.6 Project**

### **Page 3 of 6**

- All habitat concepts reviewed on this page will potentially be designed for this project
- Additional survey will include Infiltration Galleries and culvert alignment and grading

### **Page 4 of 6, Alternative A**

- All habitat work west of Hwy 207 will be designed, which some of this can be viewed on page 5 of 6
- All habitat tree enhancement east of Hwy 207
- NO bridges or culvert enhancement work will be designed

### **Page 5 of 6, Alternative B**

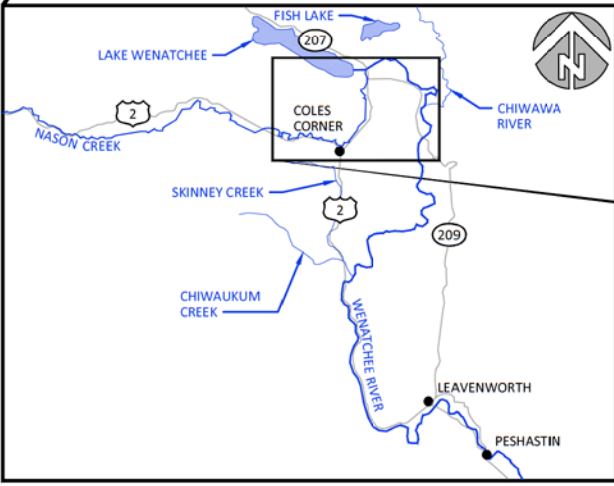
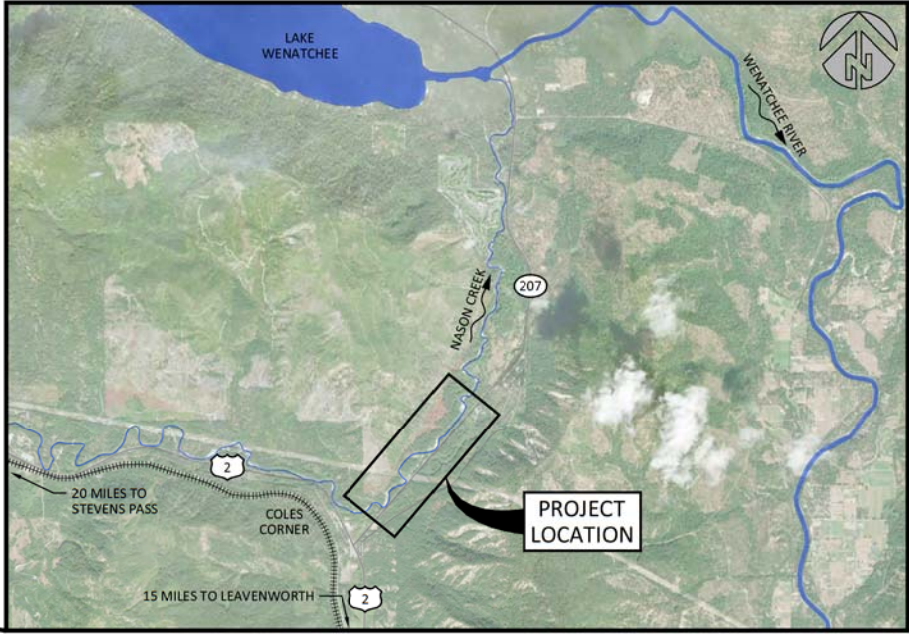
- All habitat work west of Hwy 207 will be designed , which some of this can be viewed on page 4 of 6

### **Page 6 of 6**

- Option 2 will be the design choice for the locations of work along Hwy 207

# NASON CREEK FLOODPLAIN RIVER MILE 3.4-4.6 RESTORATION CONCEPTUAL ALTERNATIVES

CHELAN COUNTY, WA  
JUNE, 2019



**SHEET LIST:**

- 1 COVER, SHEET INDEX AND VICINITY MAP
- 2 EXISTING CONDITIONS
- 3 PROPOSED CONDITIONS - UPSTREAM
- 4 PROPOSED CONDITIONS - DOWNSTREAM, ALTERNATIVE A
- 5 PROPOSED CONDITIONS - DOWNSTREAM, ALTERNATIVE B
- 6 BANK HABITAT ENHANCEMENT AREA DETAILS

**COORDINATES:**

LATITUDE: 47°46'8"N  
LONGITUDE: 120°43'27"W  
SECTION 9, TOWNSHIP 26N, RANGE 17E  
WATERBODY: NASON CREEK  
TRIBUTARY OF: WENATCHEE RIVER

Preliminary  
Not for Construction

G:\M\NasonCreek\_Floodplain\_RM3.4-4.6\_180240\Drawings\ET\_NasonFP\_C.dwg - 6/12/19

NO.	BY	DATE	REVISION DESCRIPTION

NS DRAWN	DM DESIGNED	---- CHECKED
DM APPROVED	6/12/2019 DATE	180240 PROJECT

YAKAMA NATION FISHERIES  
NASON CREEK FLOODPLAIN RIVER MILE 3.4-4.6  
CONCEPTUAL ALTERNATIVES



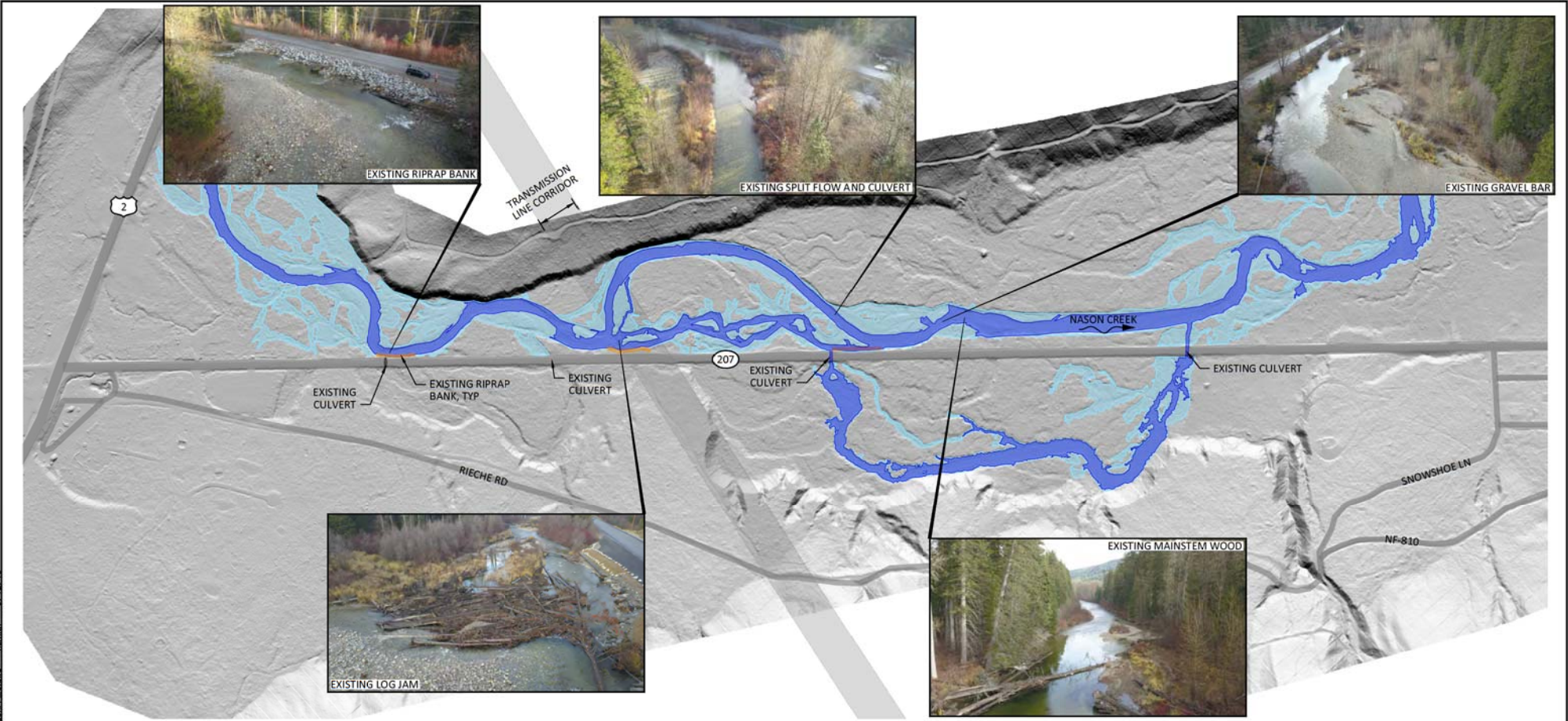
501 Portway Avenue, Suite 101  
Hood River, OR 97031  
541.386.9003  
www.interfluve.com



POST OFFICE BOX 151  
FORT ROAD  
TOPPENISH, WA 98948  
(509)865-5121

COVER, SHEET INDEX AND  
VICINITY MAP

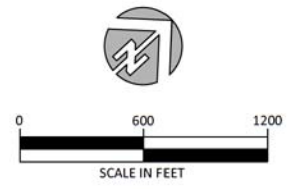
G:\M\NasonCreek\_Floodplain\_RM3.4-4.6\_180240\Drawings\FT\_NasonFP\_C.dwg - 6/12/19



**LEGEND**

- APPROXIMATE 1.5-YEAR EVENT FLOW INUNDATION LIMITS FOR EXISTING CONDITIONS
- APPROXIMATE EXISTING ACTIVE CHANNEL

**Preliminary**  
 Not for Construction



NO.	BY	DATE	REVISION DESCRIPTION

NS DRAWN	DM DESIGNED	----- CHECKED
DM APPROVED	6/12/2019 DATE	180240 PROJECT

**YAKAMA NATION FISHERIES**  
**NASON CREEK FLOODPLAIN RIVER MILE 3.4-4.6**  
**CONCEPTUAL ALTERNATIVES**

501 Portway Avenue, Suite 101  
 Hood River, OR 97031  
 541.386.9003  
 www.interfluve.com

POST OFFICE BOX 151  
 FORT ROAD  
 TOPPENISH, WA 98948  
 (509)865-5121

EXISTING CONDITIONS

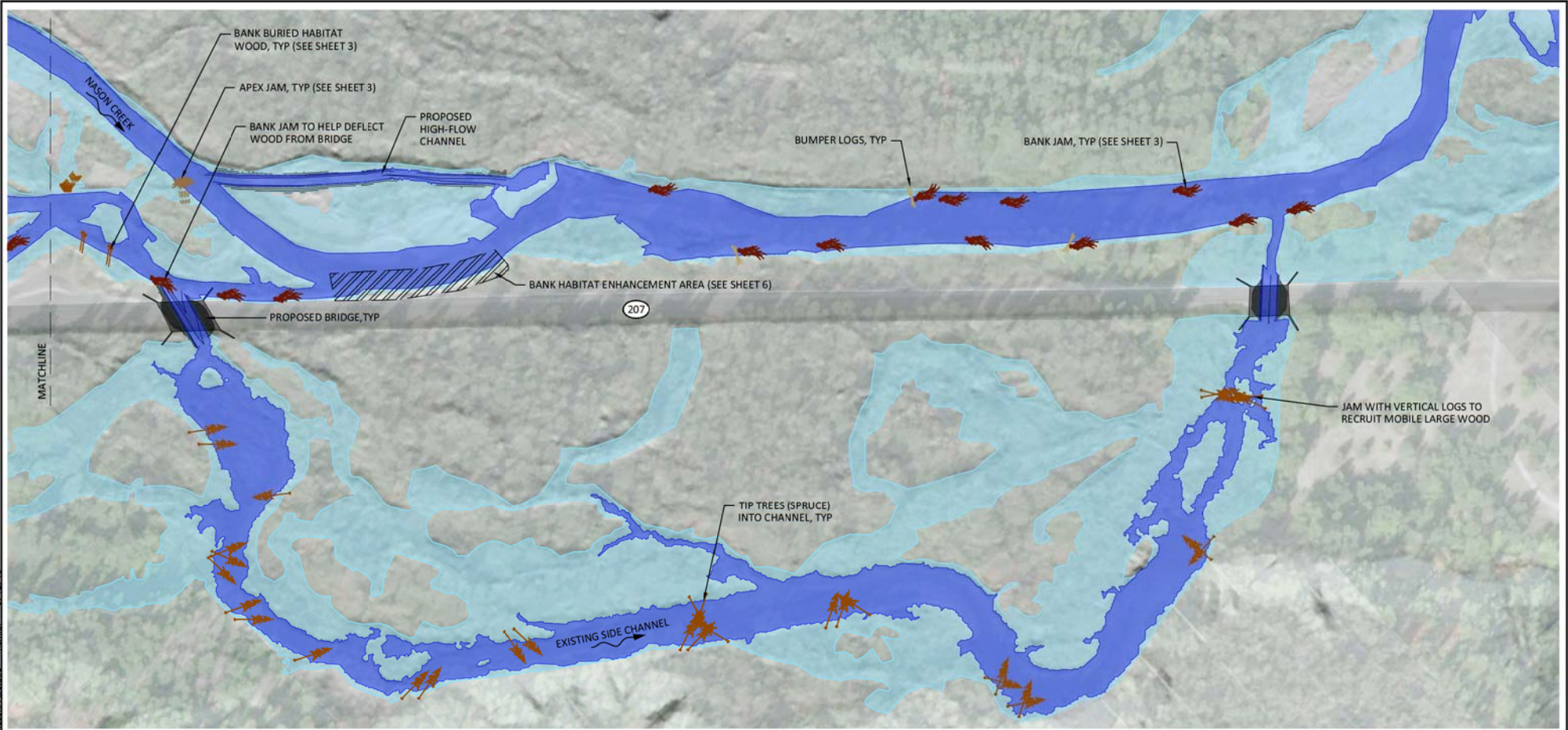
SHEET  
**2 OF 6**



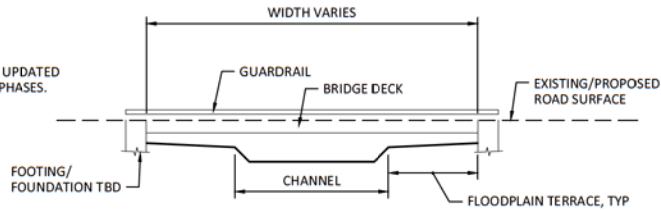




G:\M\NasonCreek\_Floodplain\_RM3.4-4.6\_180240\Drawings\FT\_NasonFP\_C.dwg - 6/12/19



**NOTE:**  
DIMENSIONS TO BE UPDATED  
IN FUTURE DESIGN PHASES.



**SECTION VIEW - PROPOSED BRIDGE**

**LEGEND**

- PROPOSED CONTOURS (1-FT)
- APPROXIMATE 1.5-YEAR EVENT FLOW INUNDATION LIMITS FOR ALTERNATIVE A CONDITIONS
- APPROXIMATE ACTIVE CHANNEL FOR ALTERNATIVE A CONDITIONS
- BANK HABITAT ENHANCEMENT AREA (SEE SHEET 6)



**Preliminary**  
 Not for Construction

NO.	BY	DATE	REVISION DESCRIPTION

NS DRAWN	DM DESIGNED	---- CHECKED
DM APPROVED	6/12/2019 DATE	180240 PROJECT

**YAKAMA NATION FISHERIES**  
**NASON CREEK FLOODPLAIN RIVER MILE 3.4-4.6**  
**CONCEPTUAL ALTERNATIVES**



501 Portway Avenue, Suite 101  
 Hood River, OR 97031  
 541.386.9003  
 www.interfluve.com

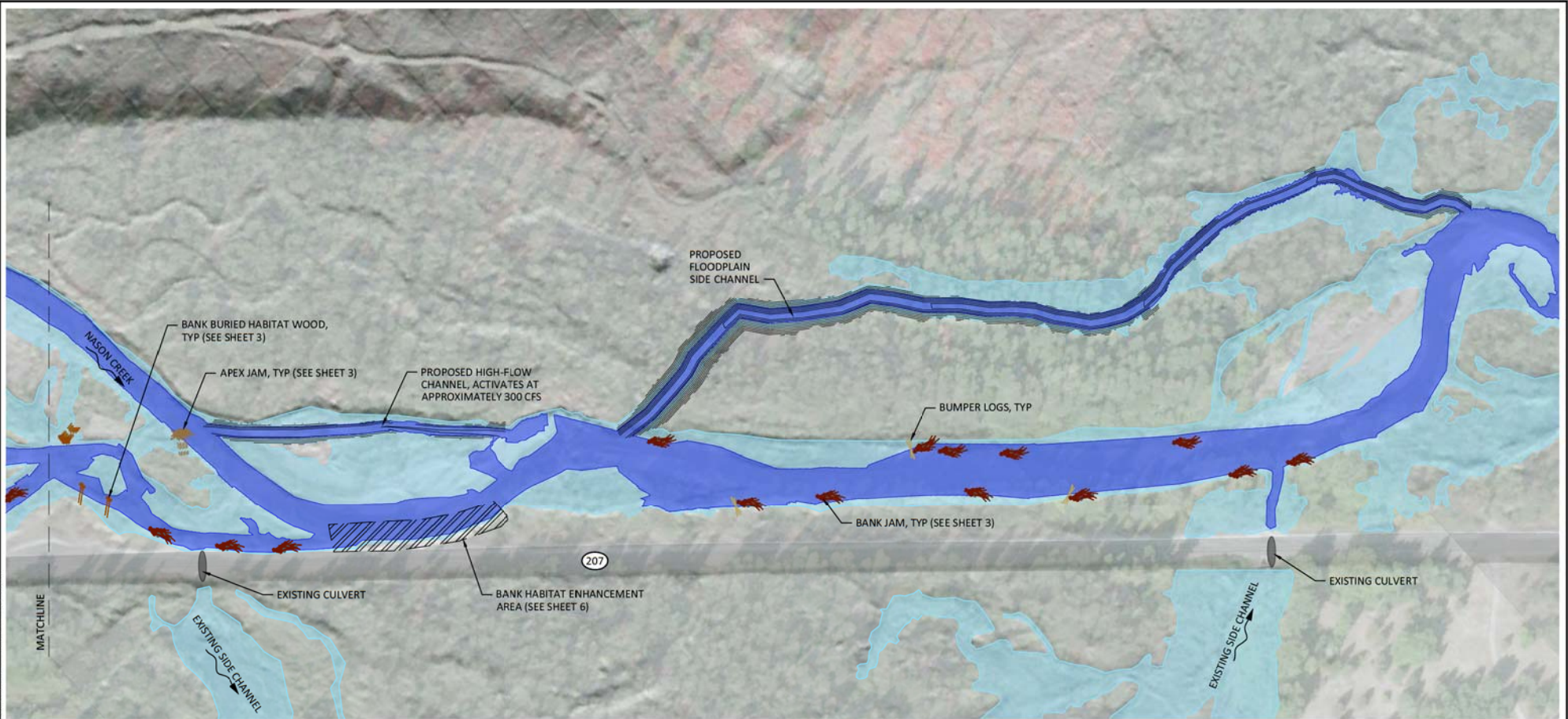


POST OFFICE BOX 151  
 FORT ROAD  
 TOPPENISH, WA 98948  
 (509)865-5121

**PROPOSED CONDITIONS -**  
**DOWNSTREAM,**  
**ALTERNATIVE A**


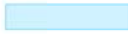




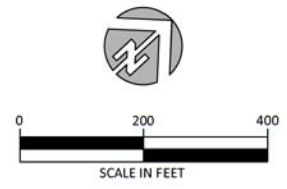
G:\M\NasonCreek\_Floodplain\_RM3.4-4.6\_180240\Drawings\FT\_NasonFP\_C.dwg - 6/12/19



**Preliminary**  
Not for Construction

**LEGEND**

-  PROPOSED CONTOURS (1-FT)
-  APPROXIMATE 1.5-YEAR EVENT FLOW INUNDATION LIMITS FOR ALTERNATIVE B CONDITIONS
-  APPROXIMATE ACTIVE CHANNEL FOR ALTERNATIVE B CONDITIONS
-  BANK HABITAT ENHANCEMENT AREA (SEE SHEET 6)



NO.	BY	DATE	REVISION DESCRIPTION

NS DRAWN	DM DESIGNED	---- CHECKED
DM APPROVED	6/12/2019 DATE	180240 PROJECT

**YAKAMA NATION FISHERIES**  
NASON CREEK FLOODPLAIN RIVER MILE 3.4-4.6  
CONCEPTUAL ALTERNATIVES



501 Portway Avenue, Suite 101  
Hood River, OR 97031  
541.386.9003  
www.interfluve.com

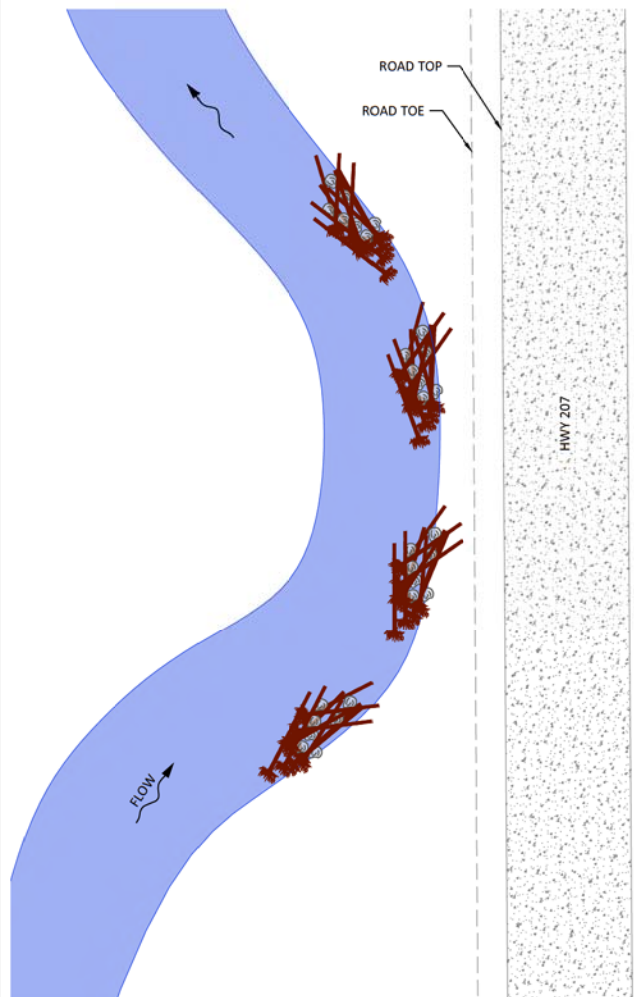


POST OFFICE BOX 151  
FORT ROAD  
TOPPENISH, WA 98948  
(509)865-5121

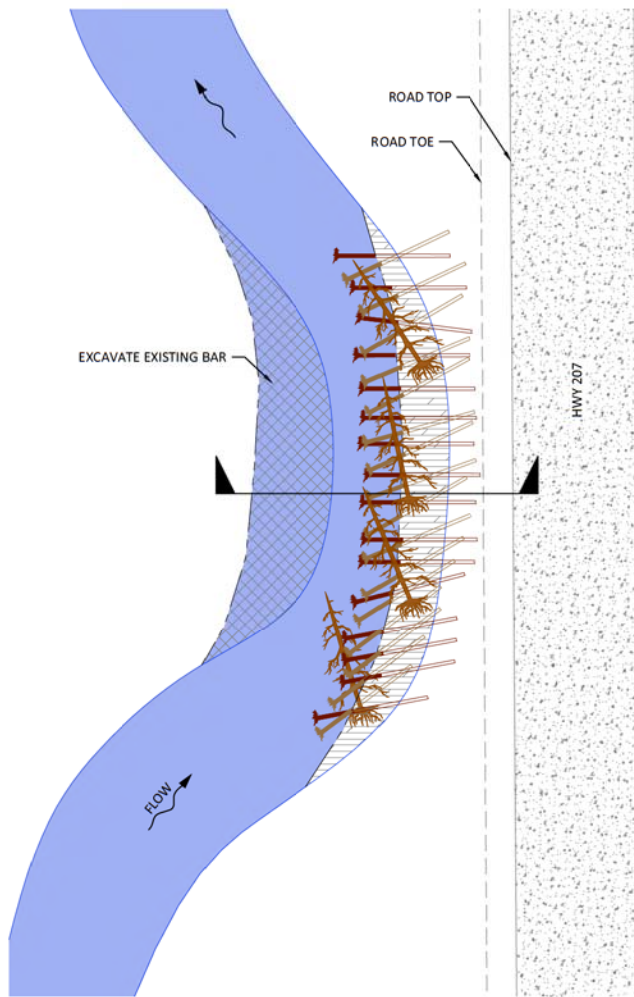
**PROPOSED CONDITIONS -  
DOWNSTREAM,  
ALTERNATIVE B**

SHEET  
**5 of 6**

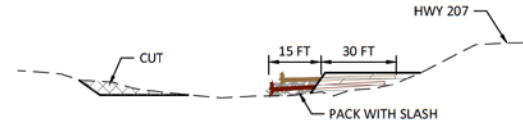
G:\M\NasonCreek\_Floodplain\_RM3.4-4.6\_180240\Drawings\FI\_NasonFP\_C.dwg - 6/12/19



**PLAN VIEW - BANK HABITAT ENHANCEMENT OPTION 1**



**PLAN VIEW - BANK HABITAT ENHANCEMENT OPTION 2**



**SECTION VIEW - BANK HABITAT ENHANCEMENT OPTION 2**

Preliminary  
Not for Construction

NO.	BY	DATE	REVISION DESCRIPTION

NS DRAWN	DM DESIGNED	---- CHECKED
DM APPROVED	6/12/2019 DATE	180240 PROJECT

**YAKAMA NATION FISHERIES**  
**NASON CREEK FLOODPLAIN RIVER MILE 3.4-4.6**  
**CONCEPTUAL ALTERNATIVES**



501 Portway Avenue, Suite 101  
 Hood River, OR 97031  
 541.386.9003  
 www.interfluve.com



POST OFFICE BOX 151  
 FORT ROAD  
 TOPPENISH, WA 98948  
 (509)865-5121

**BANK HABITAT ENHANCEMENT AREA DETAILS**