



TWISP RIVER - NEWBY CUT3

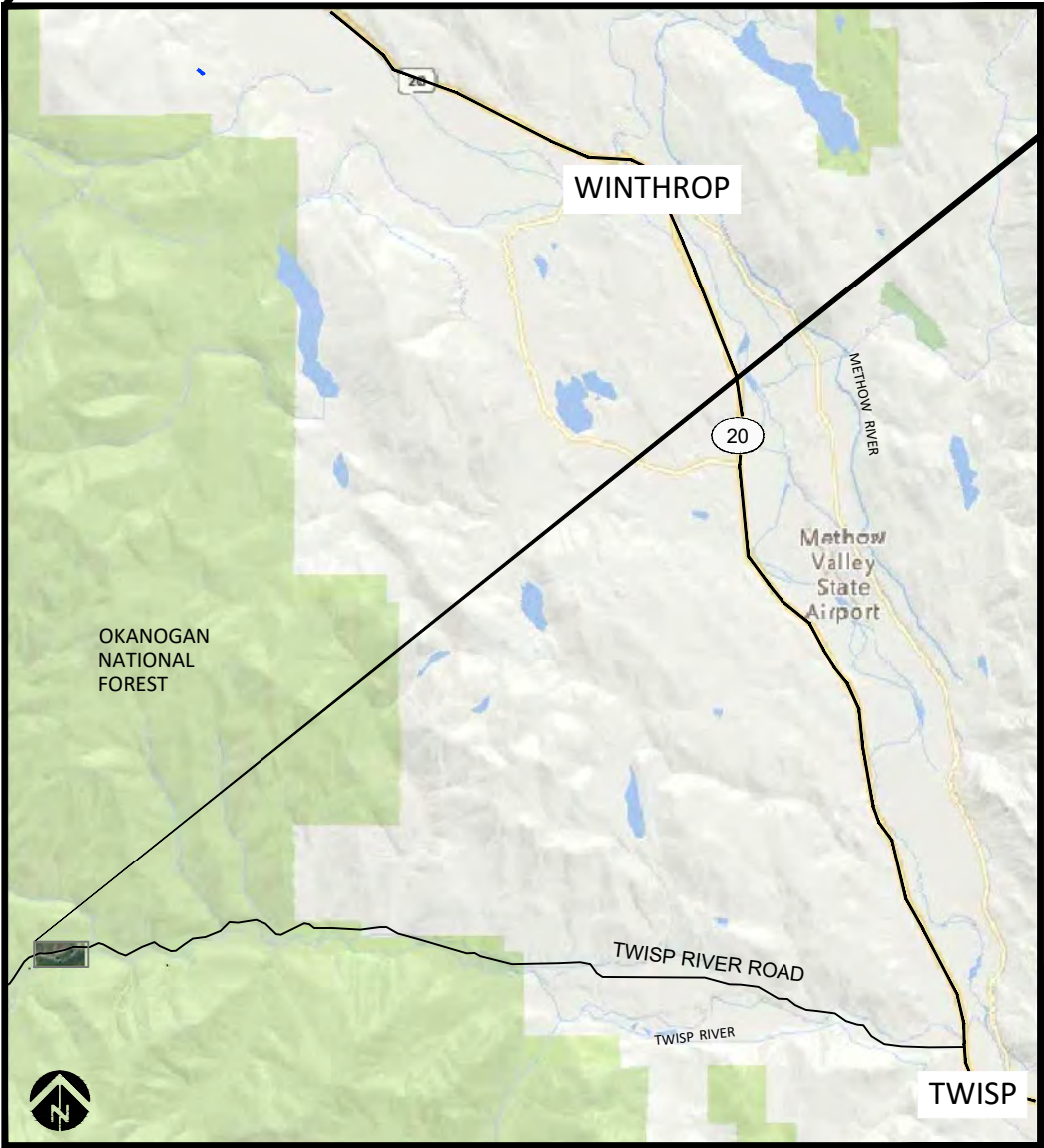
FISH HABITAT ENHANCEMENT PROJECT

Conceptual Design Drawings

December, 2021

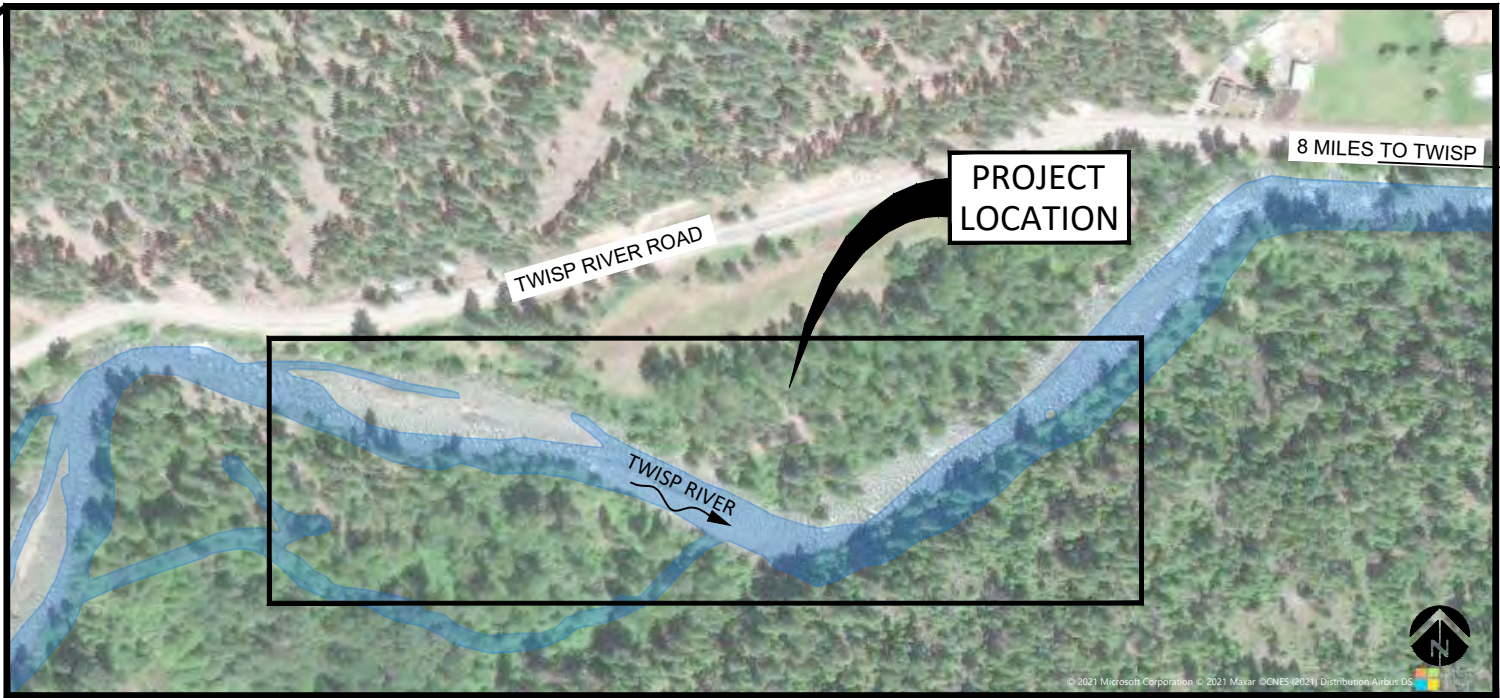


2 JOHNSON LANE
WINTHROP WA, 98862



VICINITY MAP

NO SCALE



SITE MAP

SITE LOCATION

OKANOGAN COUNTY, WASHINGTON

LATITUDE: 48°22'37" NORTH
LONGITUDE: 120°17'49" WEST

WATERBODY: TWISP RIVER
TRIBUTARY OF: METHOW RIVER

SHEET INDEX

- 1 - COVER SHEET
- 2 - SITE OVERVIEW
- 3 - BAR APEX LOG STRUCTURE
- 4 - GRAVEL BAR LOG STRUCTURE
- 5 - BOULDER LOG STRUCTURE
- 6 - SIDE CHANNEL - PLAN & PROFILE
- 7 - SIDE CHANNEL TYPICAL DETAILS



NO.	BY	DATE	REVISION DESCRIPTION

MM	MB	JJ
DRAWN	DESIGNED	CHECKED
JJ	12/31/21	
APPROVED	DATE	PROJECT

YAKAMA NATION FISHERIES PROGRAM
TWISP RIVER - NEWBY CUT3
FISH HABITAT ENHANCEMENT

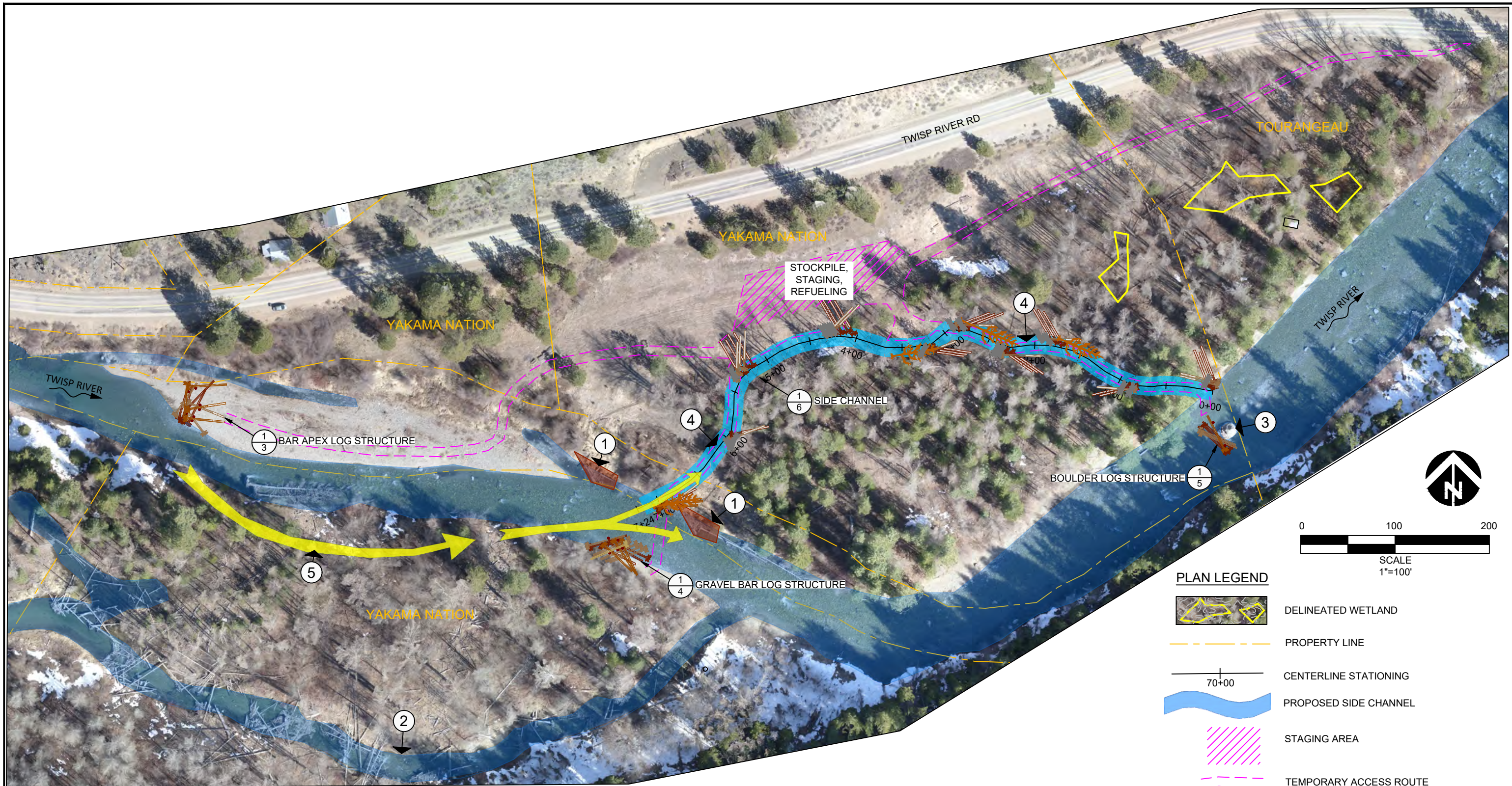


501 Portway Avenue, Suite 101
Hood River, OR 97031
541.386.9003
www.interfluve.com

COVER SHEET

SHEET

1 OF 7



CALL-OUT NOTES

- 1 EXISTING LOG STRUCTURES, CONSTRUCTED IN 2017
- 2 PHASE 1 NEWBY SIDE CHANNEL, CONSTRUCTED IN 2018
- 3 EXISTING LARGE BOULDER IN MIDDLE OF RIVER
- 4 UTILIZE SIDE CHANNEL FOOTPRINT TO ACCESS RIVER AND LOG STRUCTURES
- 5 FUTURE CHANNEL MEANDER TREND

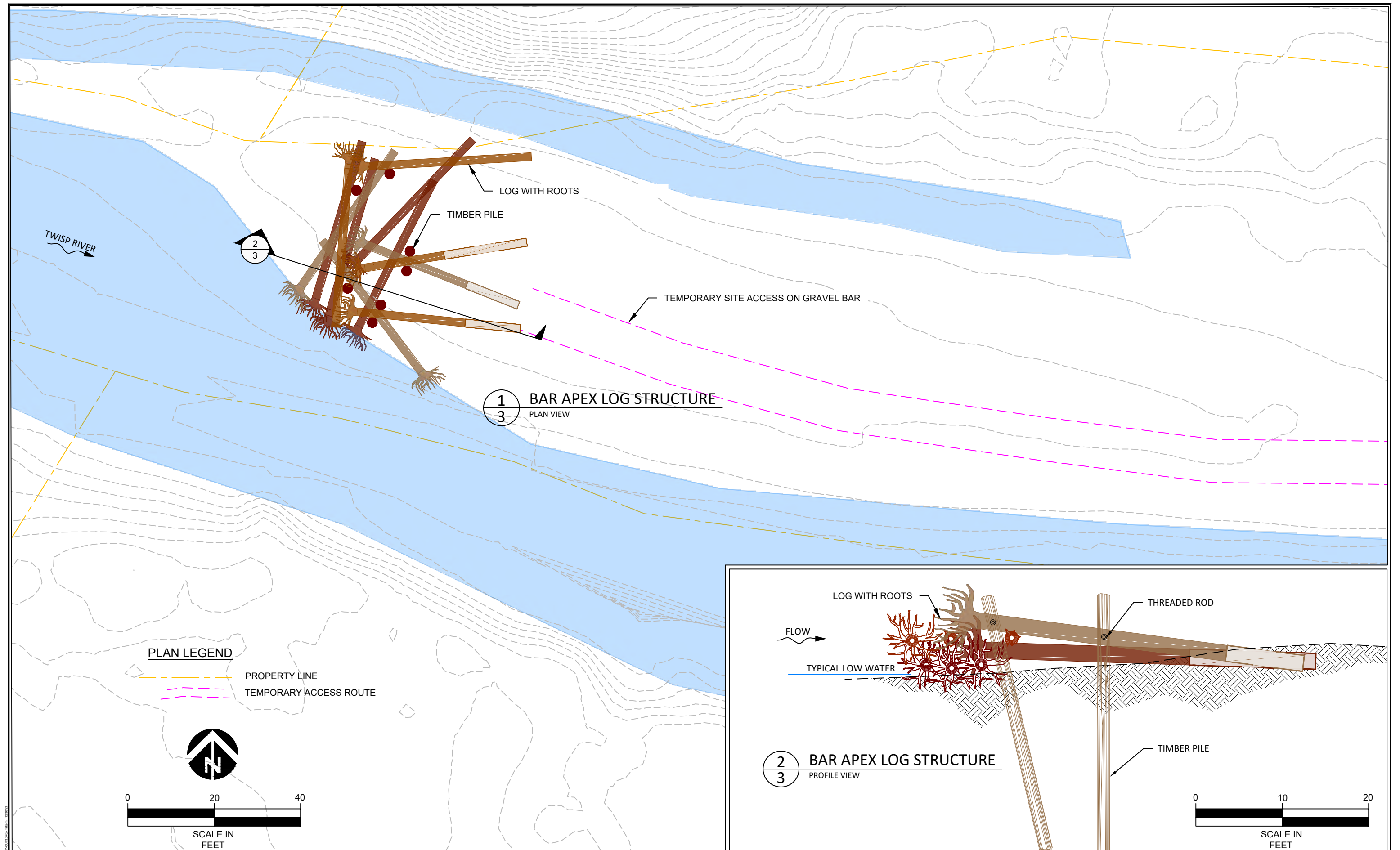
				MM	MB	JJ
				DRAWN	DESIGNED	CHECKED
				JJ	12/31/21	
				APPROVED	DATE	PROJECT
NO.	BY	DATE	REVISION DESCRIPTION			

YAKAMA NATION FISHERIES PROGRAM
TWISP RIVER - NEWBY CUT3
FISH HABITAT ENHANCEMENT



501 Portway Avenue, Suite 101
Hood River, OR 97031
541.386.9003
www.interfluve.com

SITE OVERVIEW



NO.	BY	DATE	REVISION DESCRIPTION

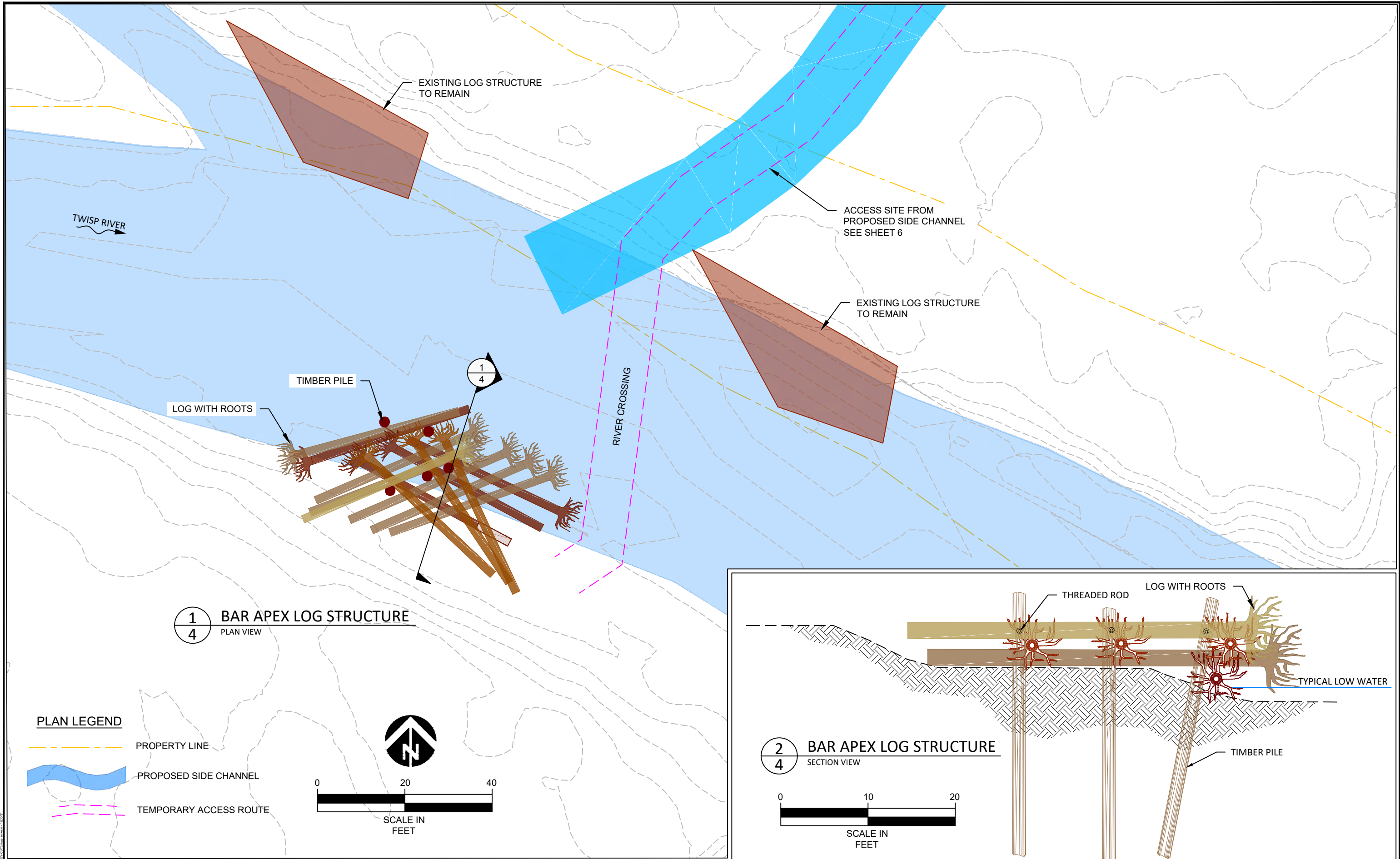
MM DRAWN	MB DESIGNED	JJ CHECKED
JJ APPROVED	12/31/21 DATE	PROJECT

YAKAMA NATION FISHERIES PROGRAM
 TWISP RIVER - NEWBY CUT3
 FISH HABITAT ENHANCEMENT

 501 Portway Avenue, Suite 101
 Hood River, OR 97031
 541.386.9003
 www.interfluve.com

BAR APEX LOG STRUCTURE

SHEET
 3 OF 7

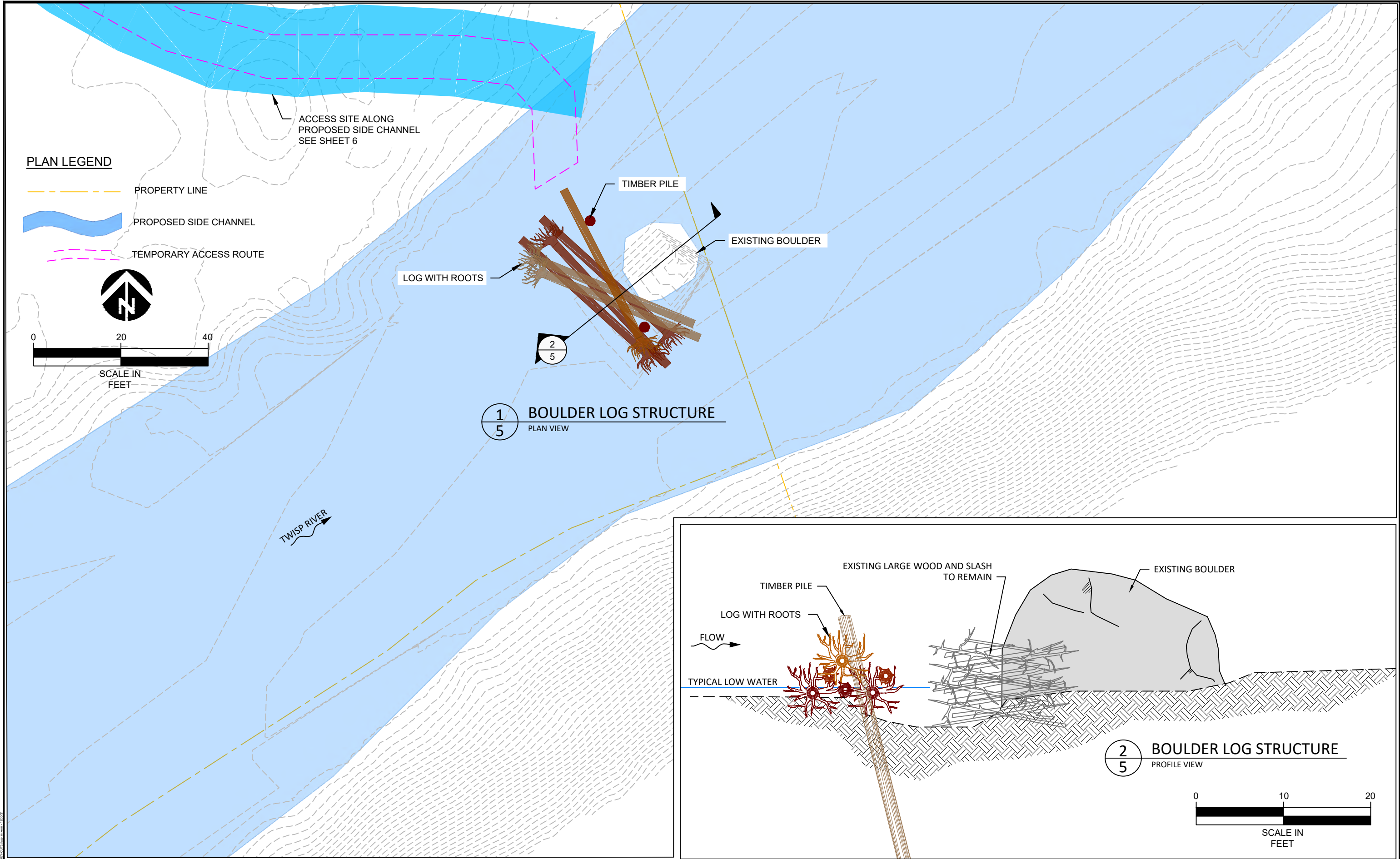


NO.	BY	DATE	REVISION DESCRIPTION

MM DRAWN	MB DESIGNED	JJ CHECKED
JJ APPROVED	12/31/21 DATE	 PROJECT

YAKAMA NATION FISHERIES PROGRAM
TWISP RIVER - NEWBY CUT3
FISH HABITAT ENHANCEMENT

 501 Portway Avenue, Suite 101
Hood River, OR 97031
541.386.9003
www.interfluve.com



NO.	BY	DATE	REVISION DESCRIPTION

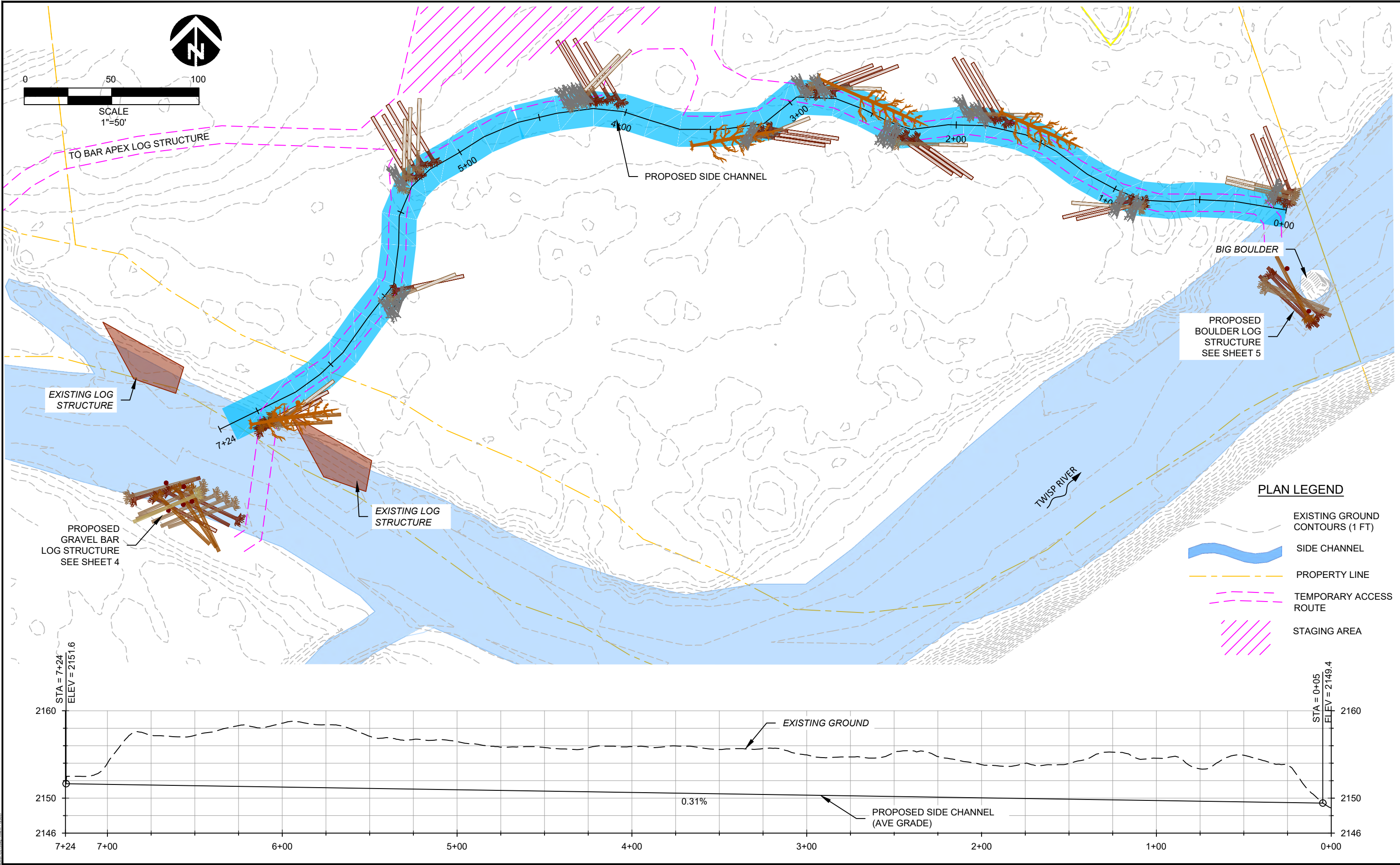
MM	MB	JJ
DRAWN	DESIGNED	CHECKED
JJ	12/31/21	
APPROVED	DATE	PROJECT

YAKAMA NATION FISHERIES PROGRAM
TWISP RIVER - NEWBY CUT3
FISH HABITAT ENHANCEMENT



501 Portway Avenue, Suite 101
Hood River, OR 97031
541.386.9003
www.interfluve.com

BOULDER LOG STRUCTURE



NO.	BY	DATE	REVISION DESCRIPTION

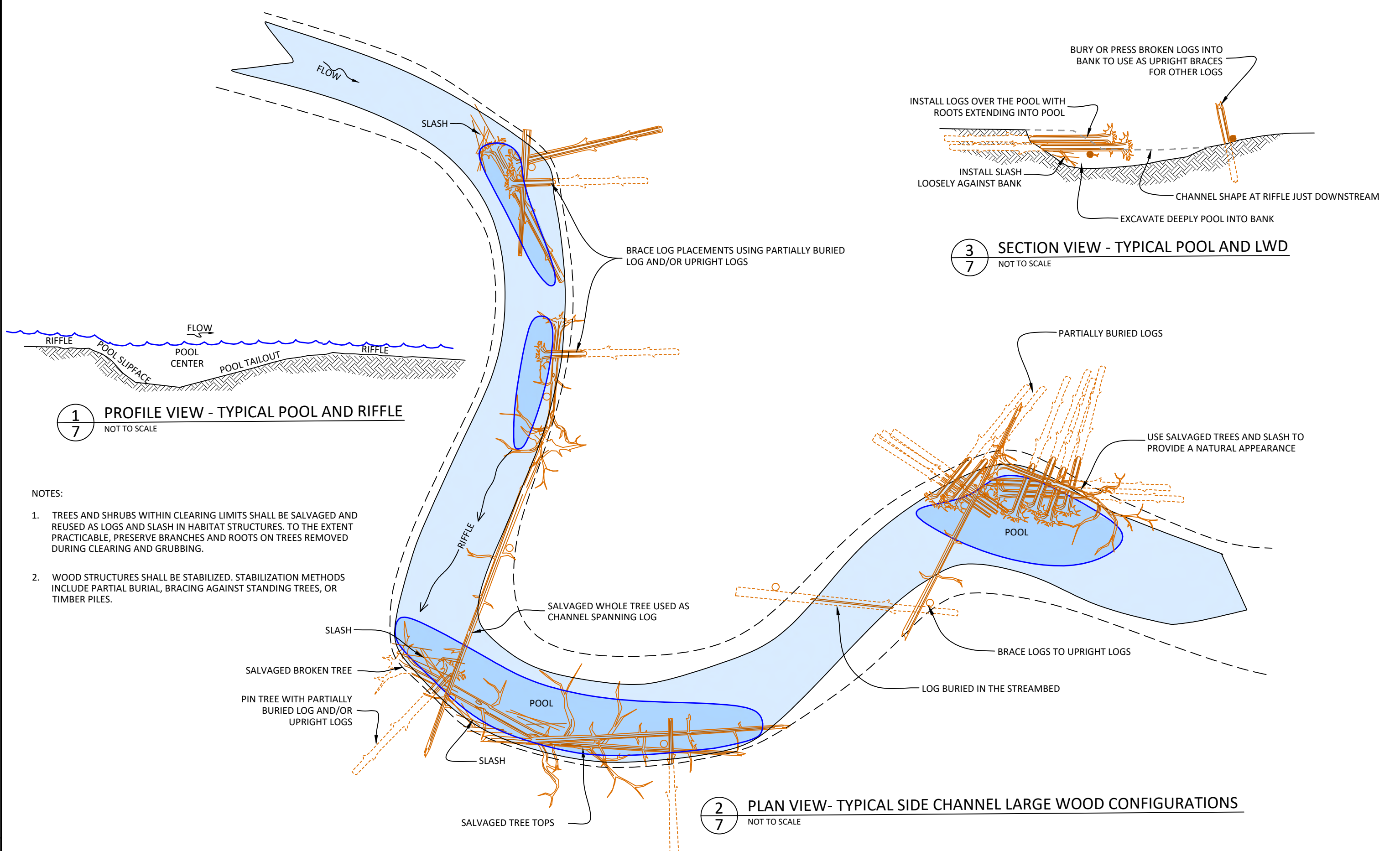
MM	MB	JJ
DRAWN	DESIGNED	CHECKED
JJ	12/31/21	
APPROVED	DATE	PROJECT

YAKAMA NATION FISHERIES PROGRAM
TWISP RIVER - NEWBY CUT3
FISH HABITAT ENHANCEMENT



501 Portway Avenue, Suite 101
Hood River, OR 97031
541.386.9003
www.interfluve.com

SIDE CHANNEL - PLAN & PROFILE



NOTES:

1. TREES AND SHRUBS WITHIN CLEARING LIMITS SHALL BE SALVAGED AND REUSED AS LOGS AND SLASH IN HABITAT STRUCTURES. TO THE EXTENT PRACTICABLE, PRESERVE BRANCHES AND ROOTS ON TREES REMOVED DURING CLEARING AND GRUBBING.
2. WOOD STRUCTURES SHALL BE STABILIZED. STABILIZATION METHODS INCLUDE PARTIAL BURIAL, BRACING AGAINST STANDING TREES, OR TIMBER PILES.

				MM	MB	JJ
				DRAWN	DESIGNED	CHECKED
				JJ	12/31/21	
NO.	BY	DATE	REVISION DESCRIPTION	APPROVED	DATE	PROJECT

YAKAMA NATION FISHERIES PROGRAM
TWISP RIVER - NEWBY CUT3
FISH HABITAT ENHANCEMENT



501 Portway Avenue, Suite 101
Hood River, OR 97031
541.386.9003
www.interfluve.com

SIDE CHANNEL TYPICAL DETAILS

SHEET
7 OF 7