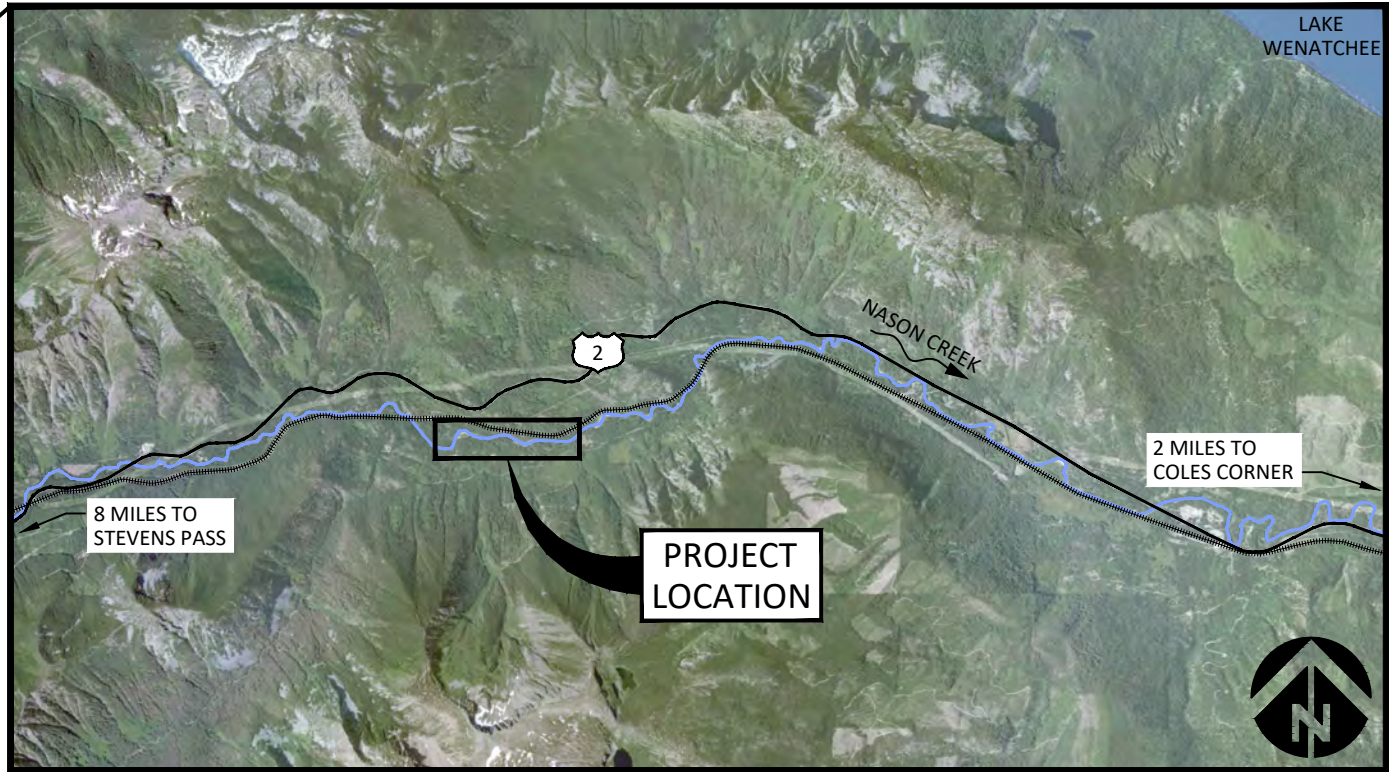
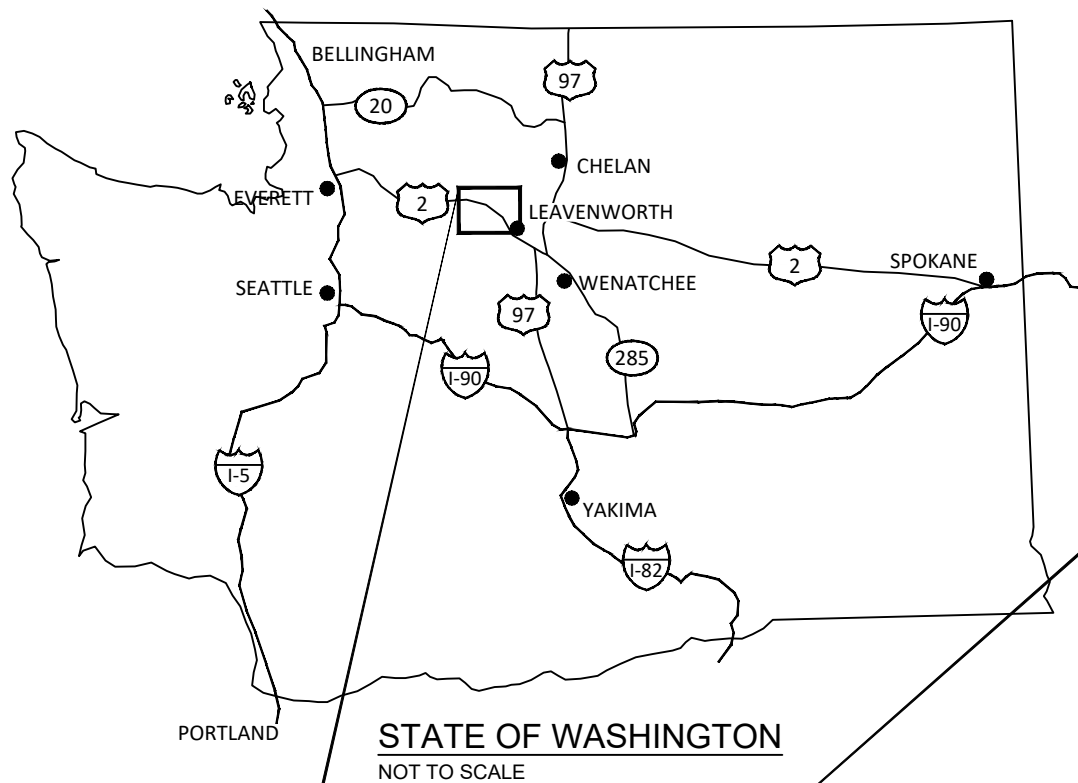


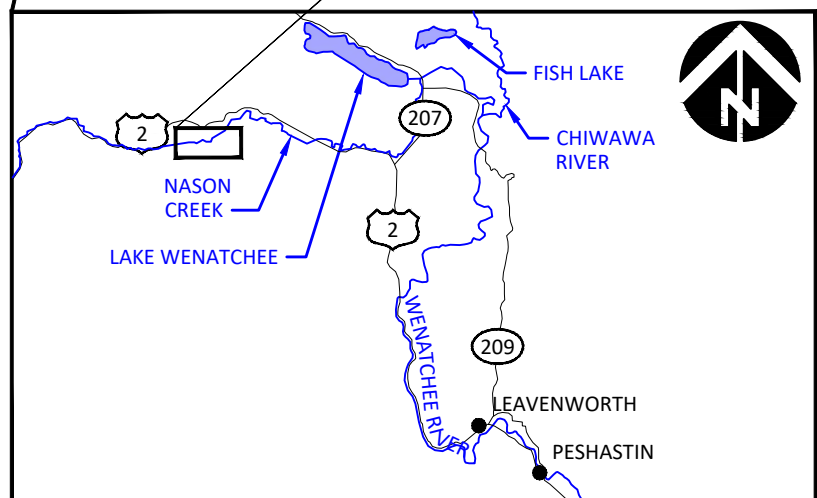
UPPER NASON CREEK RESTORATION CONCEPT DESIGN

CHELAN COUNTY, WA
MARCH, 2021

Preliminary
Not for Construction



SITE MAP
NOT TO SCALE



VICINITY MAP
NOT TO SCALE

SHEET LIST

- 1 COVER, SHEET INDEX AND VICINITY MAP
- 2 EXISTING CONDITIONS
- 3 PROPOSED CONDITIONS AND SHEET INDEX
- 4 PROPOSED CONDITIONS PLAN & PROFILE (1 OF 8)
- 5 PROPOSED CONDITIONS PLAN & PROFILE (2 OF 8)
- 6 PROPOSED CONDITIONS PLAN & PROFILE (3 OF 8)
- 7 PROPOSED CONDITIONS PLAN & PROFILE (4 OF 8)
- 8 PROPOSED CONDITIONS PLAN (5 OF 8)
- 9 PROPOSED CONDITIONS PLAN & PROFILE (6 OF 8)
- 10 PROPOSED CONDITIONS PLAN & PROFILE (7 OF 8)
- 11 PROPOSED CONDITIONS PLAN (8 OF 8)
- 12 TYPICAL DETAILS - LARGE WOOD STRUCTURES (1 OF 3)
- 13 TYPICAL DETAILS - LARGE WOOD STRUCTURES (2 OF 3)
- 14 TYPICAL DETAILS - LARGE WOOD STRUCTURES (3 OF 3)
- 15 TYPICAL DETAILS - BED TREATMENTS
- 16 TYPICAL DETAILS - GRAVEL BAR ROUGHNESS FEATURES

COORDINATES:
LATITUDE: 47°46'41"N
LONGITUDE: 120°53'32"W

TOWNSHIP 26N, RANGE 16E, SECTION 5 & 6

WATERBODY: NASON CREEK
TRIBUTARY OF: WENATCHEE RIVER



G:\U-Z\Upper Nason Creek Ph 1-2 2002-36\Drawings\1\1 UpperNason_D.dwg - nsmith - 3/16/21

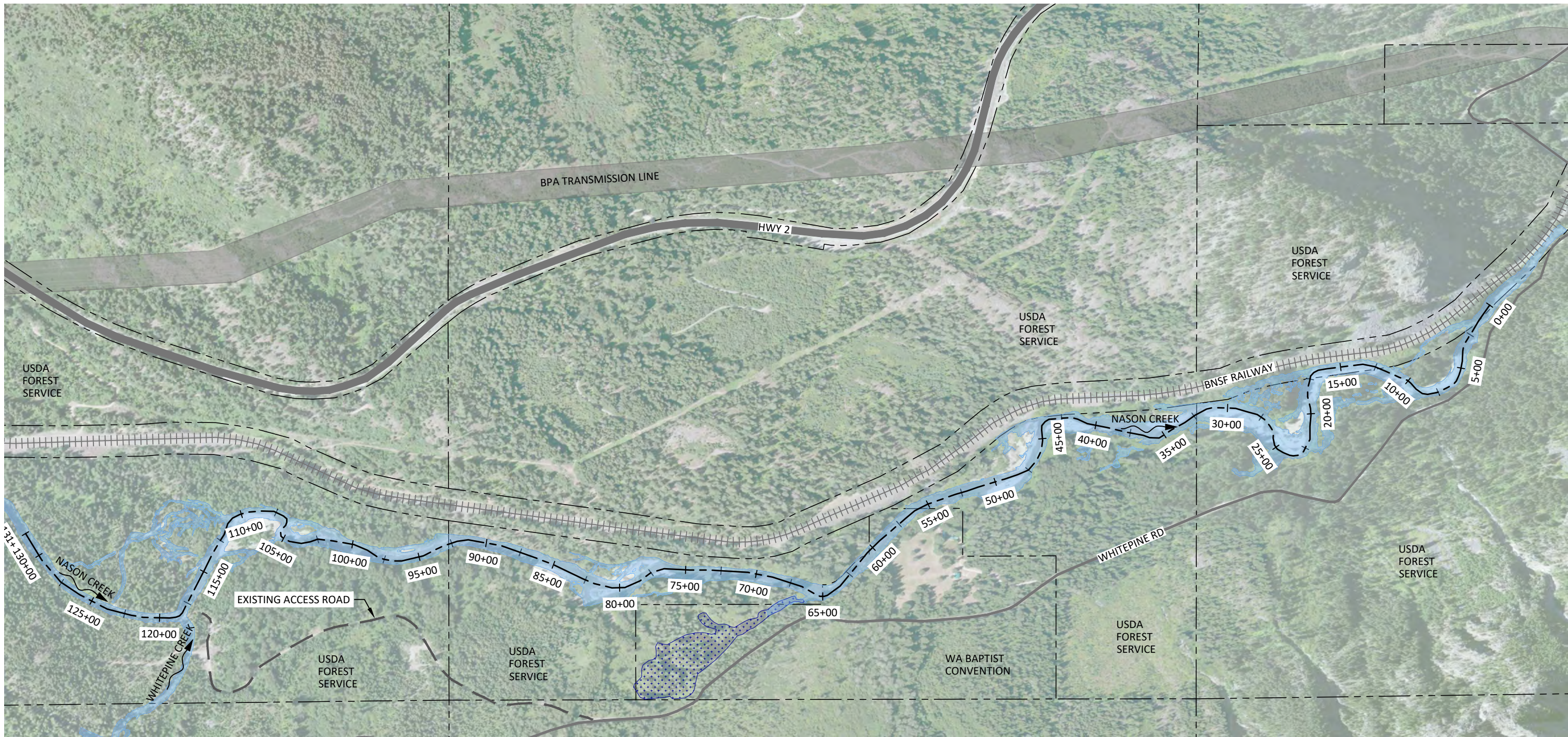
NO.	BY	DATE	REVISION DESCRIPTION

NS DRAWN	LS, DM DESIGNED	LS CHECKED
DM APPROVED	3/16/21 DATE	200236 PROJECT

UPPER NASON CREEK
RESTORATION
CONCEPT DESIGN

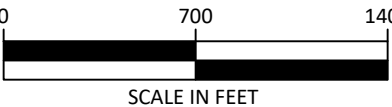
501 Portway Avenue, Suite 101
Hood River, OR 97031
541.386.9003
www.interfluve.com

COVER, SHEET INDEX
AND VICINITY MAP



LEGEND

- TAXLOTS (CHELAN COUNTY GIS)
- 115+00 --- EXISTING CHANNEL ALIGNMENT AND STATIONING
- [Blue dotted pattern] EXISTING BEAVER DAM COMPLEX (APPROX EXTENT)



Preliminary
Not for Construction



G:\U\Upper Nason Creek Ph 1-2 2002-36\Drawings\1\ UpperNason_D.dwg - nsmith - 3/16/21

NO.	BY	DATE	REVISION DESCRIPTION

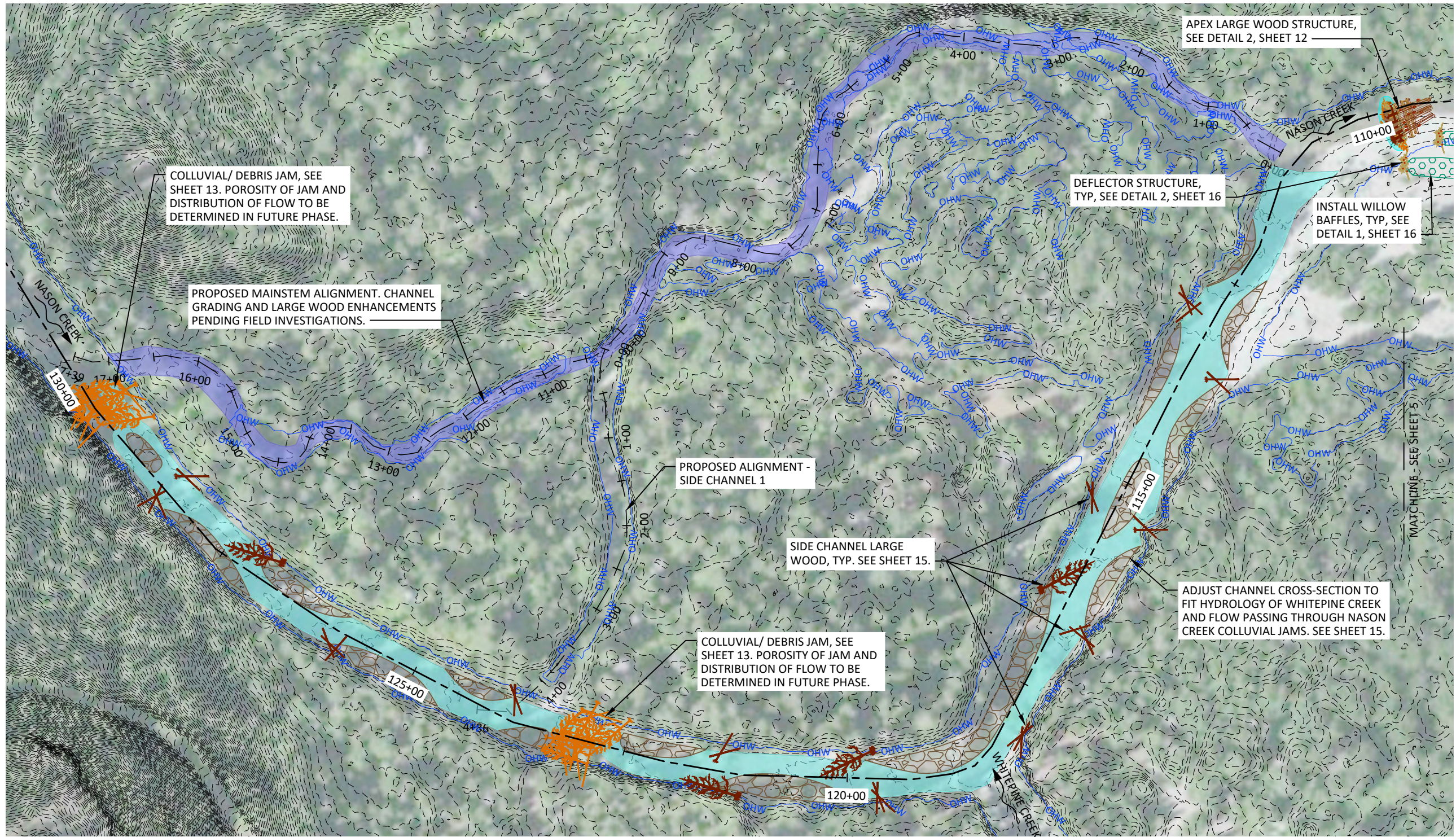
NS DRAWN	LS, DM DESIGNED	LS CHECKED
DM APPROVED	3/16/21 DATE	200236 PROJECT

UPPER NASON CREEK
RESTORATION
CONCEPT DESIGN



501 Portway Avenue, Suite 101
Hood River, OR 97031
541.386.9003
www.interfluve.com

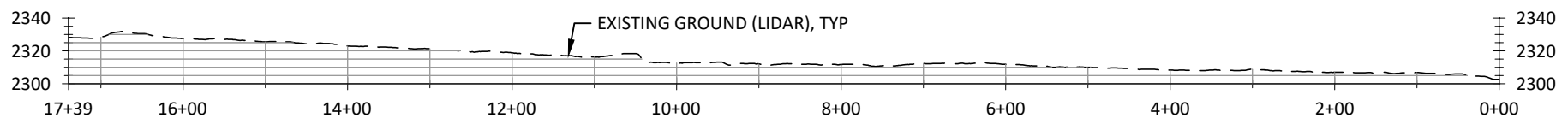
EXISTING CONDITIONS



0 120 240
SCALE IN FEET

LEGEND

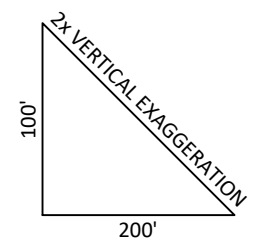
- EXISTING CONTOURS (2 FT, LIDAR)
- - - TAXLOTS (CHELAN COUNTY GIS)
- OHW ORDINARY HIGH WATER
- 115+00 EXISTING CHANNEL ALIGNMENT AND STATIONING
- PROPOSED CHANNEL BED (SEE SHEET 15)
- PROPOSED GRAVEL BAR (SEE SHEET 15)
- PROPOSED MAINSTEM



PROFILE - PROPOSED MAINSTEM



PROFILE - SIDE CHANNEL 1



Preliminary
Not for Construction



G:\U\Upper Nason Creek Ph 1-2 2002-36\Drawings\1\1 UpperNason_D.dwg - nsmith - 3/16/21

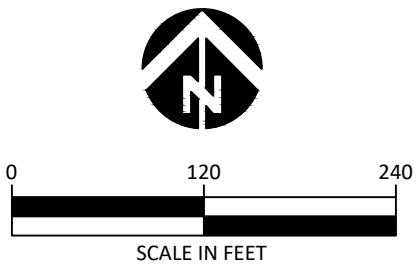
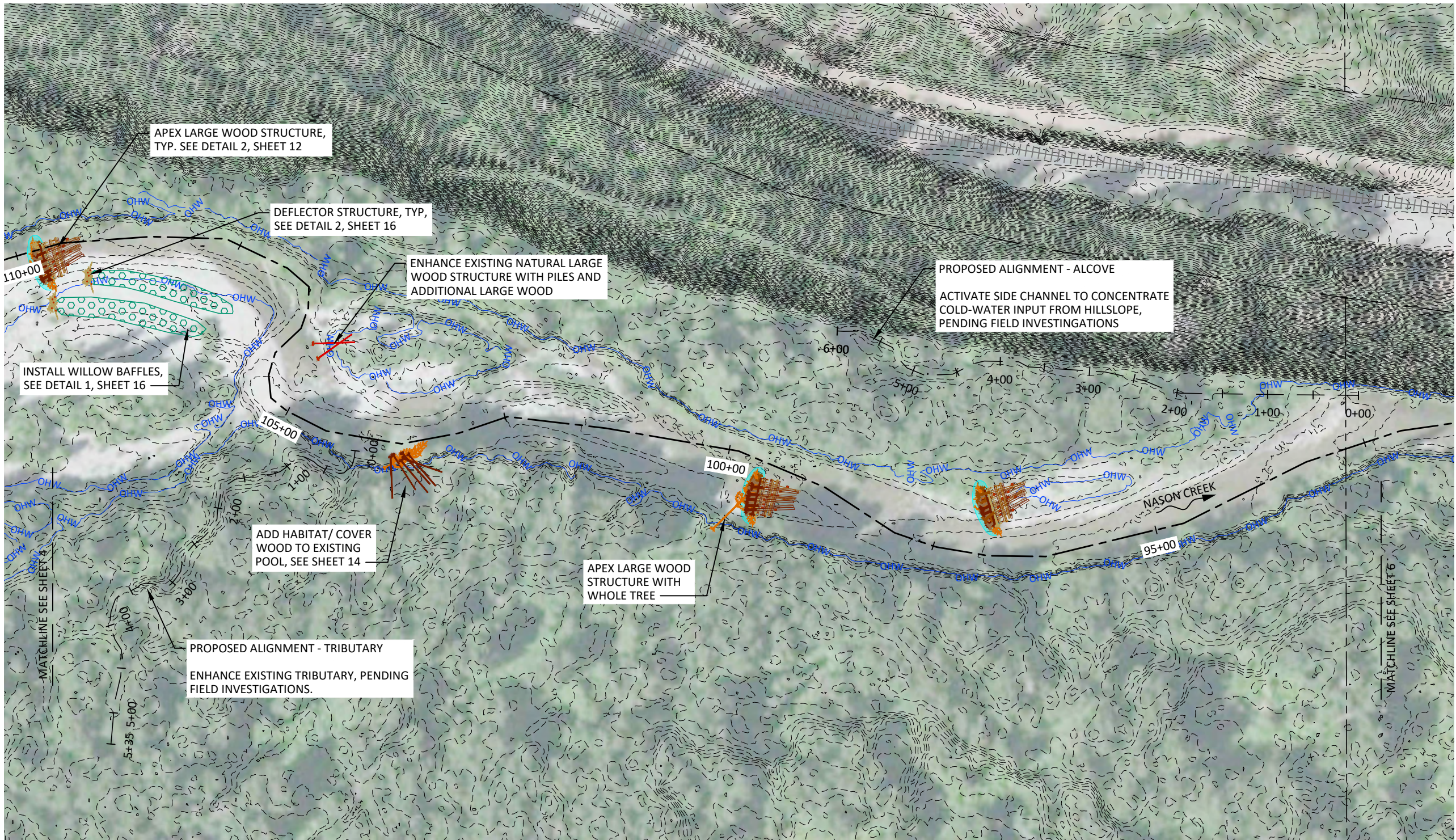
NO.	BY	DATE	REVISION DESCRIPTION	NS	LS, DM	LS
				DRAWN	DESIGNED	CHECKED
				DM	3/16/21	200236
				APPROVED	DATE	PROJECT

UPPER NASON CREEK
RESTORATION
CONCEPT DESIGN

501 Portway Avenue, Suite 101
Hood River, OR 97031
541.386.9003
www.interfluve.com

PROPOSED CONDITIONS
PLAN & PROFILE (1 OF 8)

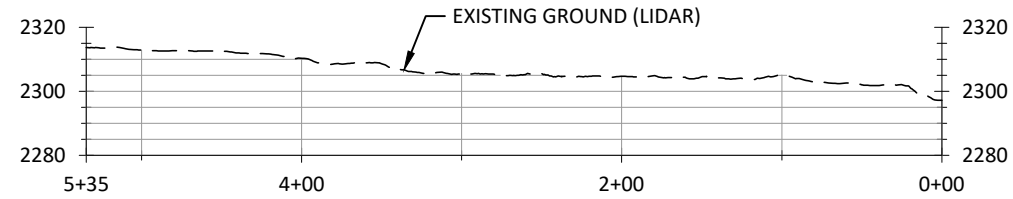
SHEET
4 OF 16



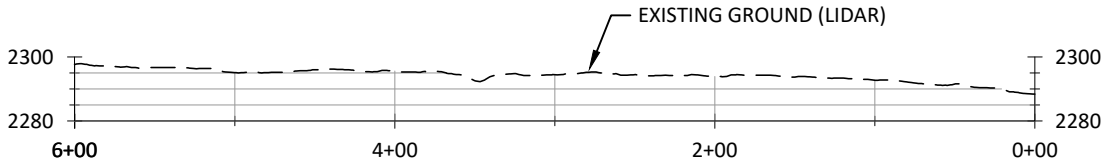
LEGEND

- EXISTING CONTOURS (2 FT, LIDAR)
- - - TAXLOTS (CHELAN COUNTY GIS)
- OHW — ORDINARY HIGH WATER
- 100+00 EXISTING CHANNEL ALIGNMENT AND STATIONING

Preliminary
Not for Construction

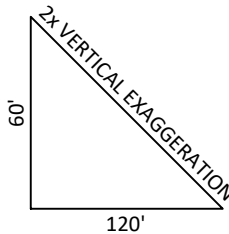


PROFILE - TRIBUTARY



PROFILE - ALCOVE

NOTE:
PROPOSED GRADING
PENDING FIELD
INVESTIGATIONS.



G:\U-Z\Upper Nason Creek Ph 1-2 2002-36\Drawings\1\1 UpperNason_D.dwg - nsmith - 3/16/21

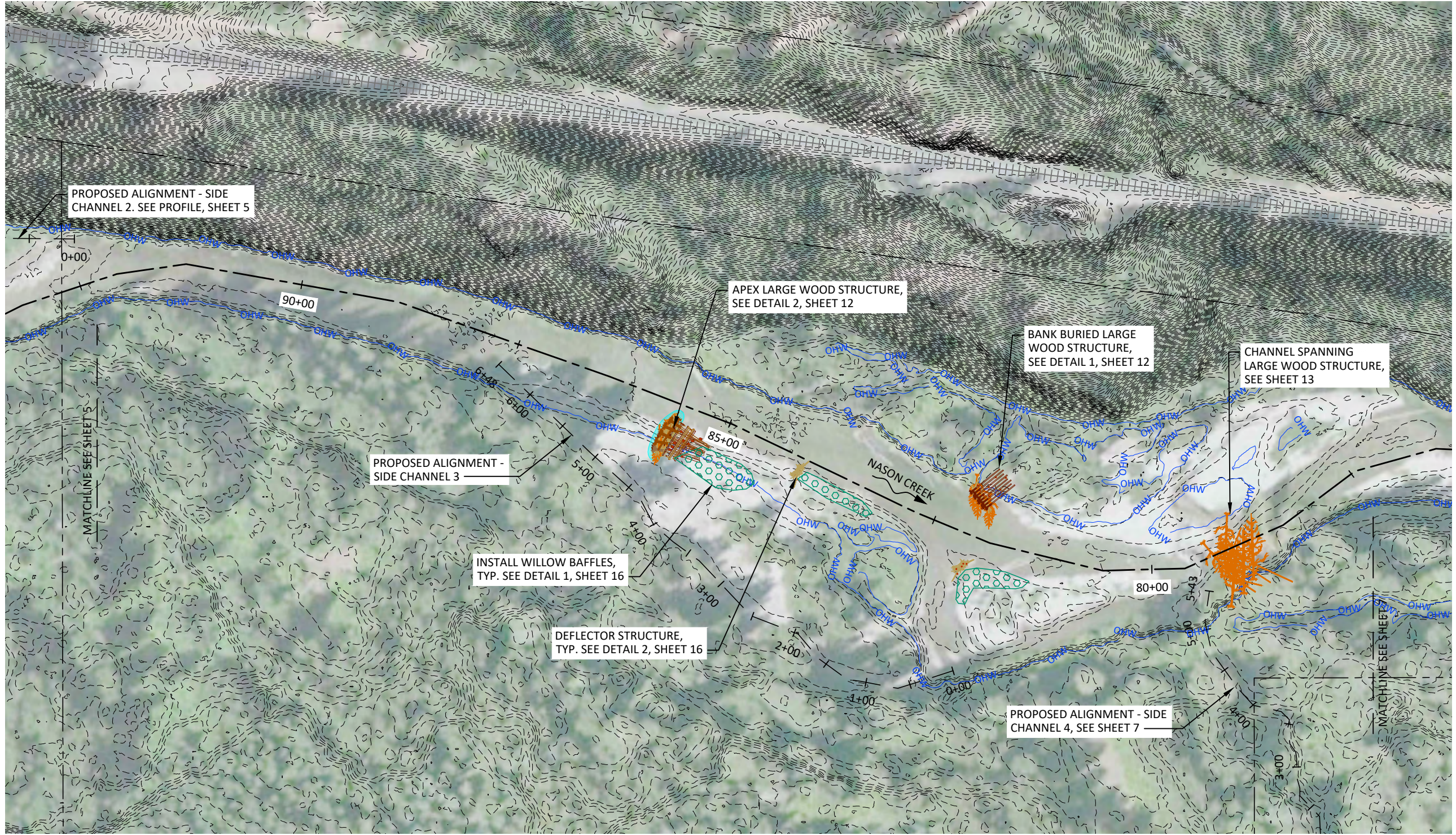
NO.	BY	DATE	REVISION DESCRIPTION	NS	LS, DM	LS
				DRAWN	DESIGNED	CHECKED
				DM	3/16/21	200236
				APPROVED	DATE	PROJECT

UPPER NASON CREEK
RESTORATION
CONCEPT DESIGN



501 Portway Avenue, Suite 101
Hood River, OR 97031
541.386.9003
www.interfluve.com

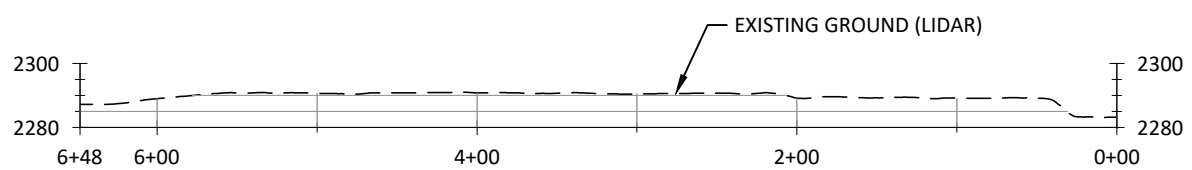
PROPOSED CONDITIONS
PLAN & PROFILE (2 OF 8)



0 120 240
SCALE IN FEET

LEGEND

- EXISTING CONTOURS (2 FT, LIDAR)
- - - TAXLOTS (CHELAN COUNTY GIS)
- OHW — ORDINARY HIGH WATER
- 80+00 EXISTING CHANNEL ALIGNMENT AND STATIONING



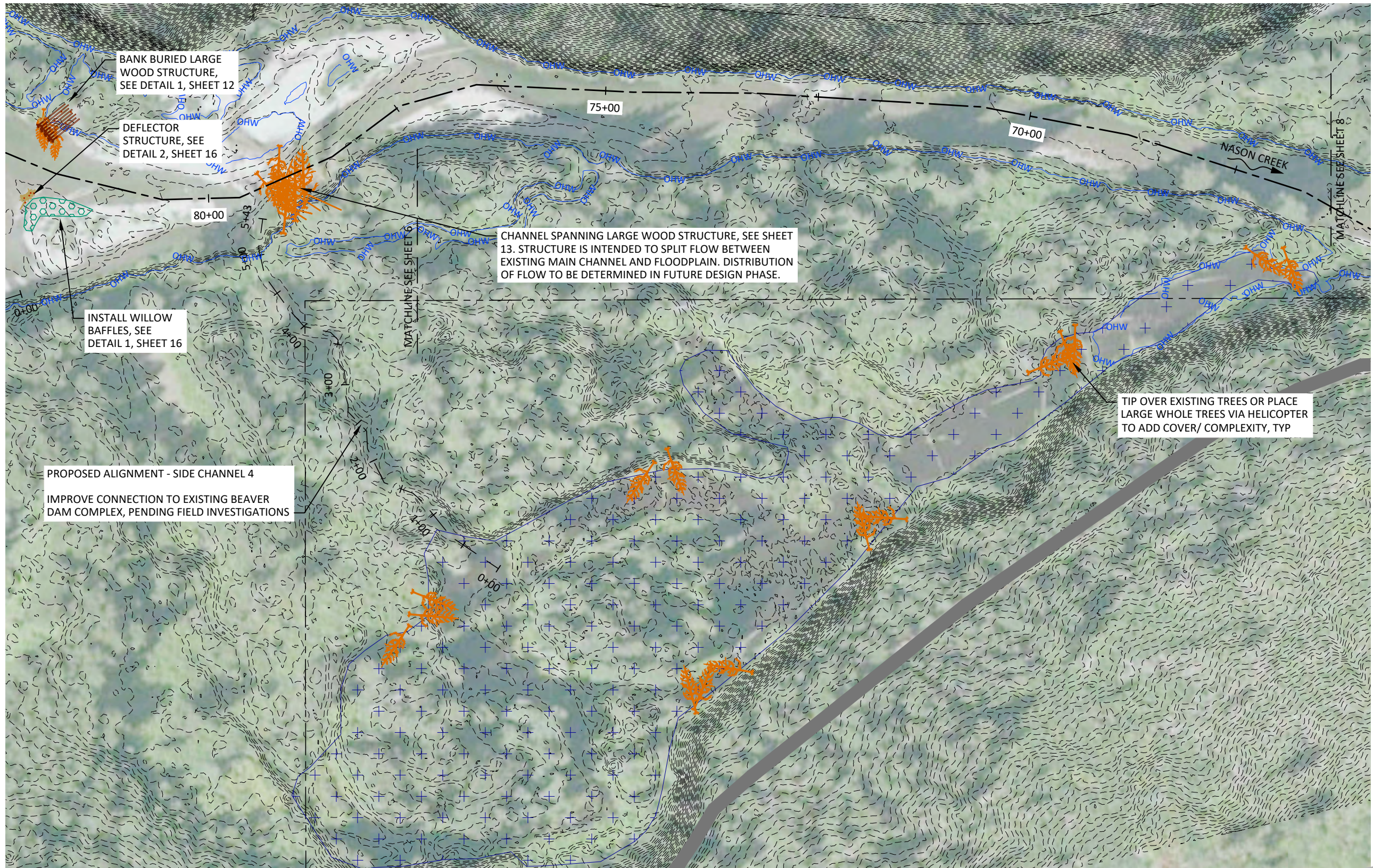
PROFILE - SIDE CHANNEL 3


NOTE:
PROPOSED GRADING PENDING FIELD INVESTIGATIONS.

2x VERTICAL EXAGGERATION

G:\U-Z\Upper Nason Creek Ph 1-2 2002-36\Drawings\1\1 UpperNason_D.dwg - nsmith - 3/16/21

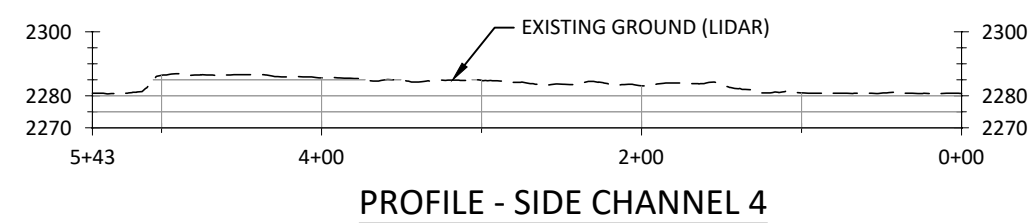
				UPPER NASON CREEK RESTORATION CONCEPT DESIGN			 <div>501 Portway Avenue, Suite 101 Hood River, OR 97031 541.386.9003 www.interfluve.com</div>		PROPOSED CONDITIONS PLAN & PROFILE (3 OF 8)		SHEET	
											6 OF 16	
NO.	BY	DATE	REVISION DESCRIPTION	NS DRAWN	LS, DM DESIGNED	LS CHECKED						
				DM APPROVED	3/16/21 DATE	200236 PROJECT						



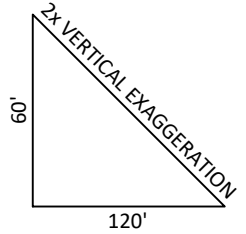

0 120 240
SCALE IN FEET

LEGEND

- EXISTING CONTOURS (2 FT, LIDAR)
- - - TAXLOTS (CHELAN COUNTY GIS)
- OHW ORDINARY HIGH WATER
- 70+00 EXISTING CHANNEL ALIGNMENT AND STATIONING
- + + EXISTING BEAVER DAM COMPLEX (APPROX EXTENT)



NOTE:
PROPOSED GRADING PENDING
FIELD INVESTIGATIONS.



Preliminary
Not for Construction



G:\U-Z\Upper Nason Creek Ph 1-2 2002-36\Drawings\1\1 UpperNason_D.dwg - nsmith - 3/16/21

NO.	BY	DATE	REVISION DESCRIPTION	NS	LS, DM	LS
				DRAWN	DESIGNED	CHECKED
				DM	3/16/21	200236
				APPROVED	DATE	PROJECT

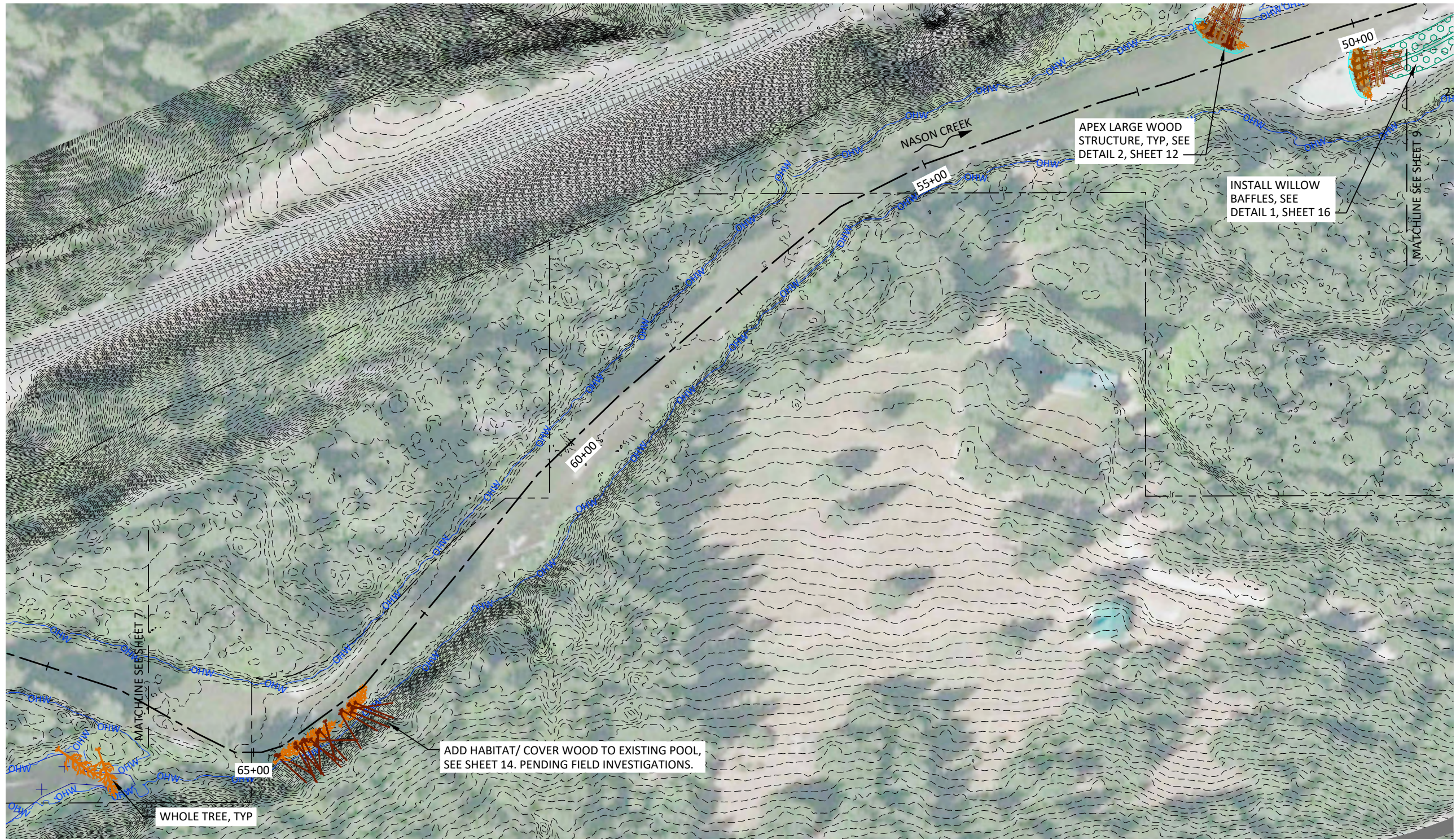
UPPER NASON CREEK
RESTORATION
CONCEPT DESIGN





501 Portway Avenue, Suite 101
Hood River, OR 97031
541.386.9003
www.interfluve.com

PROPOSED CONDITIONS
PLAN & PROFILE (4 OF 8)

SHEET
7 OF 16





SCALE IN FEET

LEGEND

- EXISTING CONTOURS (2 FT, LIDAR)
- - - TAXLOTS (CHELAN COUNTY GIS)
- OHW — ORDINARY HIGH WATER
- 60+00 — EXISTING CHANNEL ALIGNMENT AND STATIONING

Preliminary
Not for Construction



G:\U-Z\Upper Nason Creek Ph 1-2 2002-36\Drawings\1\1 UpperNason_D.dwg - nsmith - 3/16/21

NO.	BY	DATE	REVISION DESCRIPTION

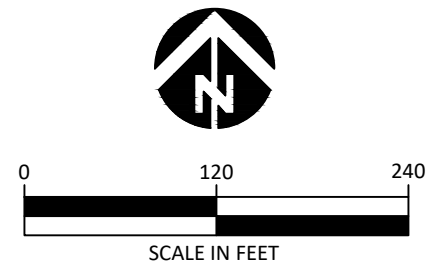
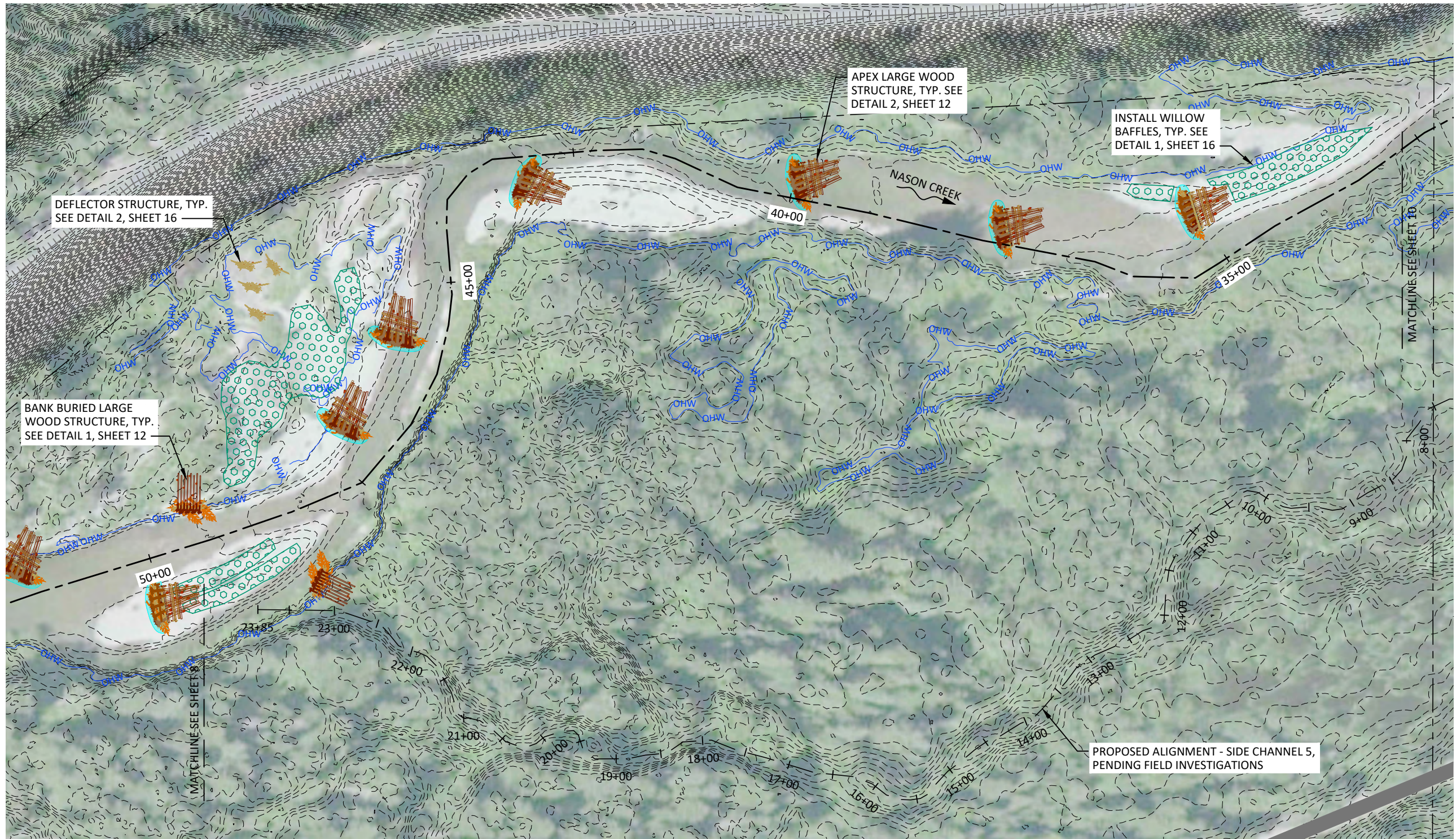
NS DRAWN	LS, DM DESIGNED	LS CHECKED
DM APPROVED	3/16/21 DATE	200236 PROJECT

UPPER NASON CREEK
RESTORATION
CONCEPT DESIGN



501 Portway Avenue, Suite 101
Hood River, OR 97031
541.386.9003
www.interfluve.com

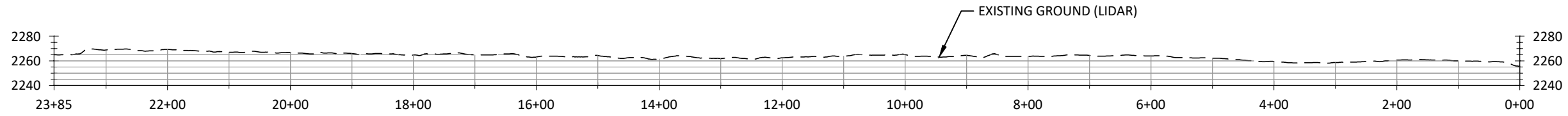
PROPOSED CONDITIONS
PLAN (5 OF 8)



LEGEND

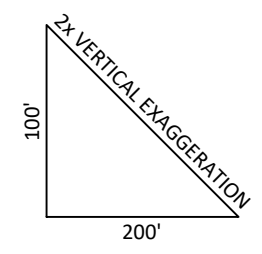
- EXISTING CONTOURS (2 FT, LIDAR)
- - - TAXLOTS (CHELAN COUNTY GIS)
- OHW ORDINARY HIGH WATER
- 40+00 EXISTING CHANNEL ALIGNMENT AND STATIONING
- + + EXISTING BEAVER DAM COMPLEX (APPROX EXTENT)

Preliminary
Not for Construction



PROFILE - SIDE CHANNEL 5

NOTE:
PROPOSED GRADING PENDING
FIELD INVESTIGATIONS.



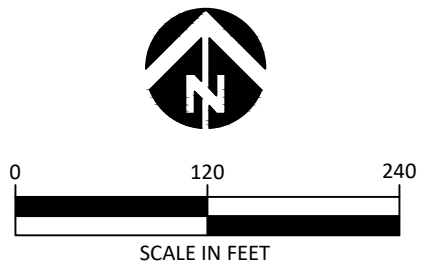
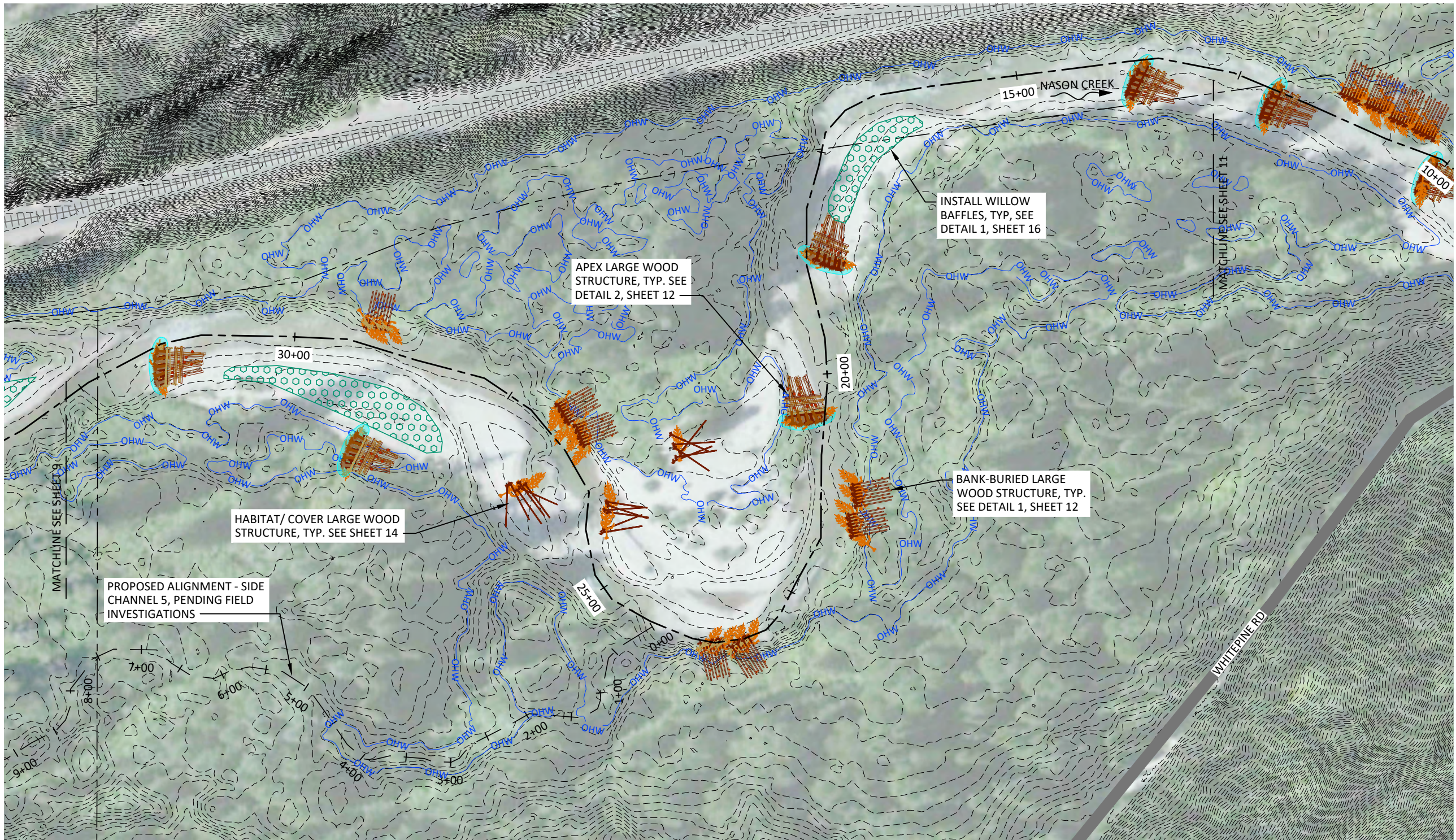
G:\U-Z\Upper Nason Creek Ph 1-2 2002-36\Drawings\16 Upper Nason D.dwg - nsmith - 3/16/21

NO.	BY	DATE	REVISION DESCRIPTION	NS	LS, DM	LS
				DRAWN	DESIGNED	CHECKED
				DM	3/16/21	200236
				APPROVED	DATE	PROJECT

UPPER NASON CREEK
RESTORATION
CONCEPT DESIGN



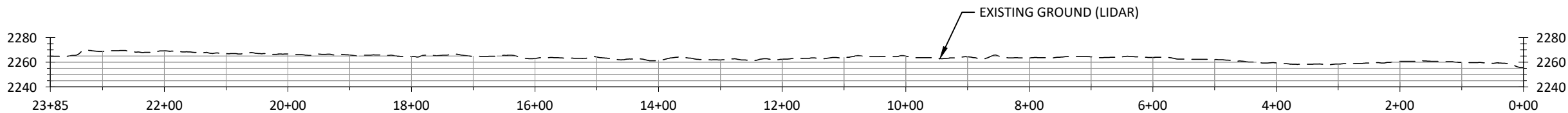
501 Portway Avenue, Suite 101
Hood River, OR 97031
541.386.9003
www.interfluve.com



LEGEND

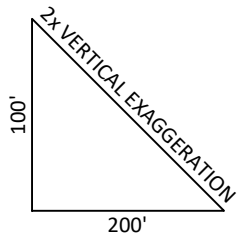
- EXISTING CONTOURS (2 FT, LIDAR)
- - - TAXLOTS (CHELAN COUNTY GIS)
- OHW — ORDINARY HIGH WATER
- 20+00 EXISTING CHANNEL ALIGNMENT AND STATIONING

Preliminary
Not for Construction



PROFILE - SIDE CHANNEL 5

NOTE:
PROPOSED GRADING PENDING
FIELD INVESTIGATIONS.



G:\U\Upper Nason Creek Ph 1-2 2002-36\Drawings\1\1 UpperNason_D.dwg - nsmith - 3/16/21

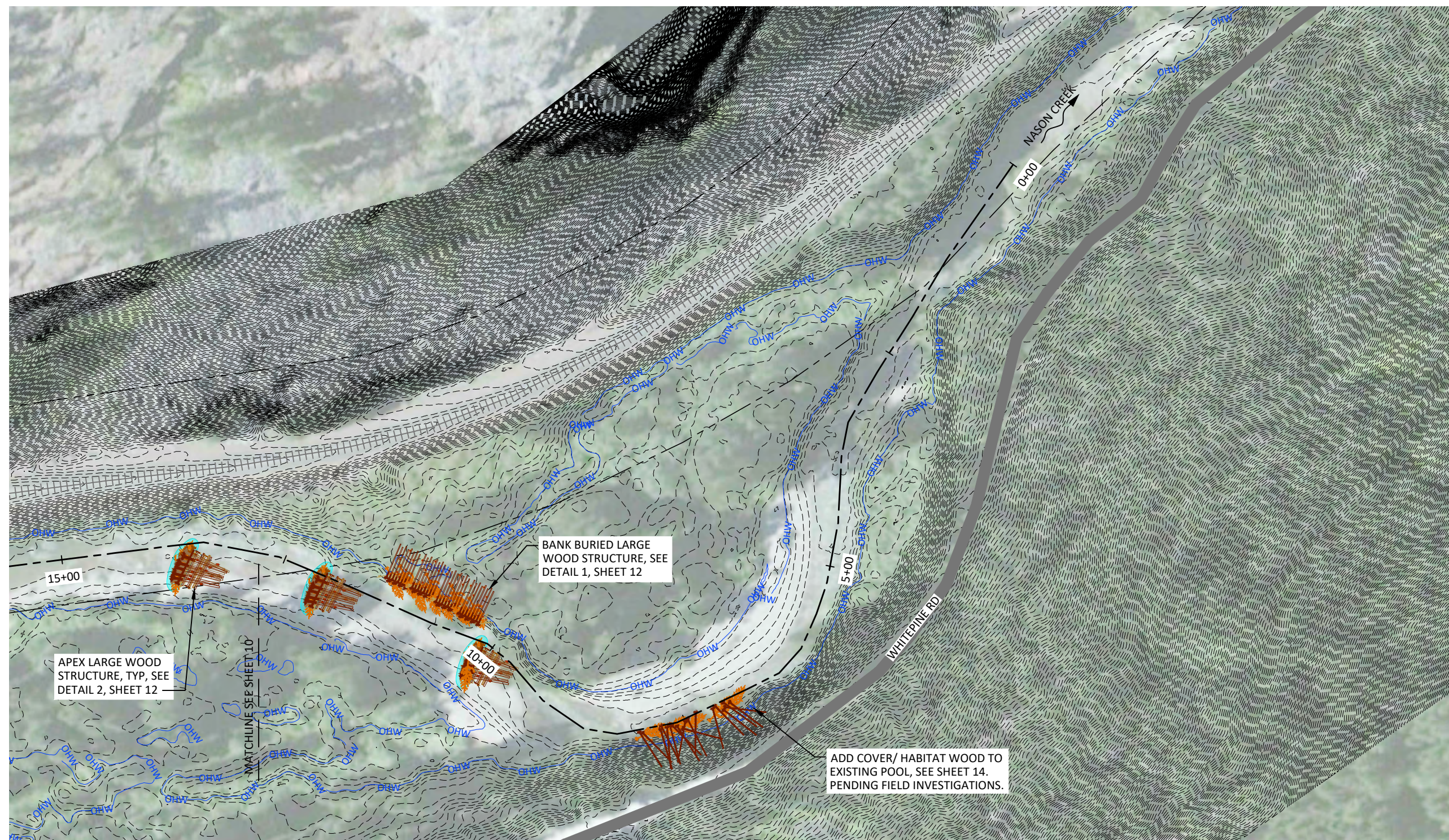
NO.	BY	DATE	REVISION DESCRIPTION	NS	LS, DM	LS
				DRAWN	DESIGNED	CHECKED
				DM	3/16/21	200236
				APPROVED	DATE	PROJECT

UPPER NASON CREEK
RESTORATION
CONCEPT DESIGN



501 Portway Avenue, Suite 101
Hood River, OR 97031
541.386.9003
www.interfluve.com

PROPOSED CONDITIONS
PLAN & PROFILE (7 OF 8)



LEGEND

Preliminary
Not for Construction

<u>NS</u> DRAWN	<u>LS, DM</u> DESIGNED	<u>LS</u> CHECKED
<u>DM</u> APPROVED	<u>3/16/21</u> DATE	<u>200236</u> PROJECT

UPPER NASON CREEK RESTORATION CONCEPT DESIGN

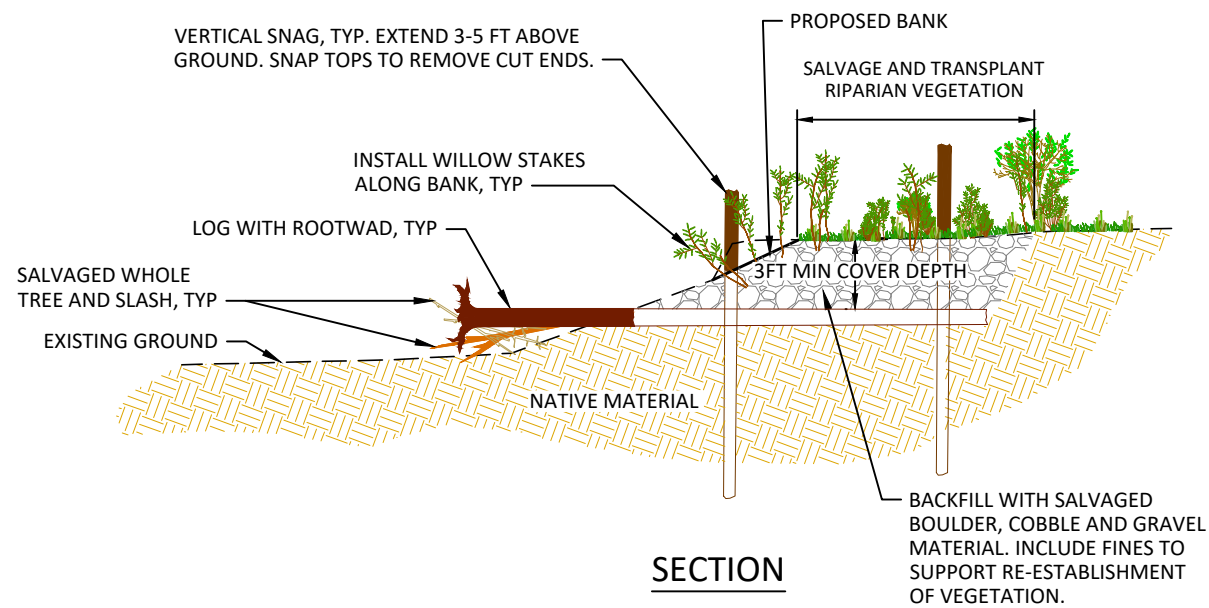
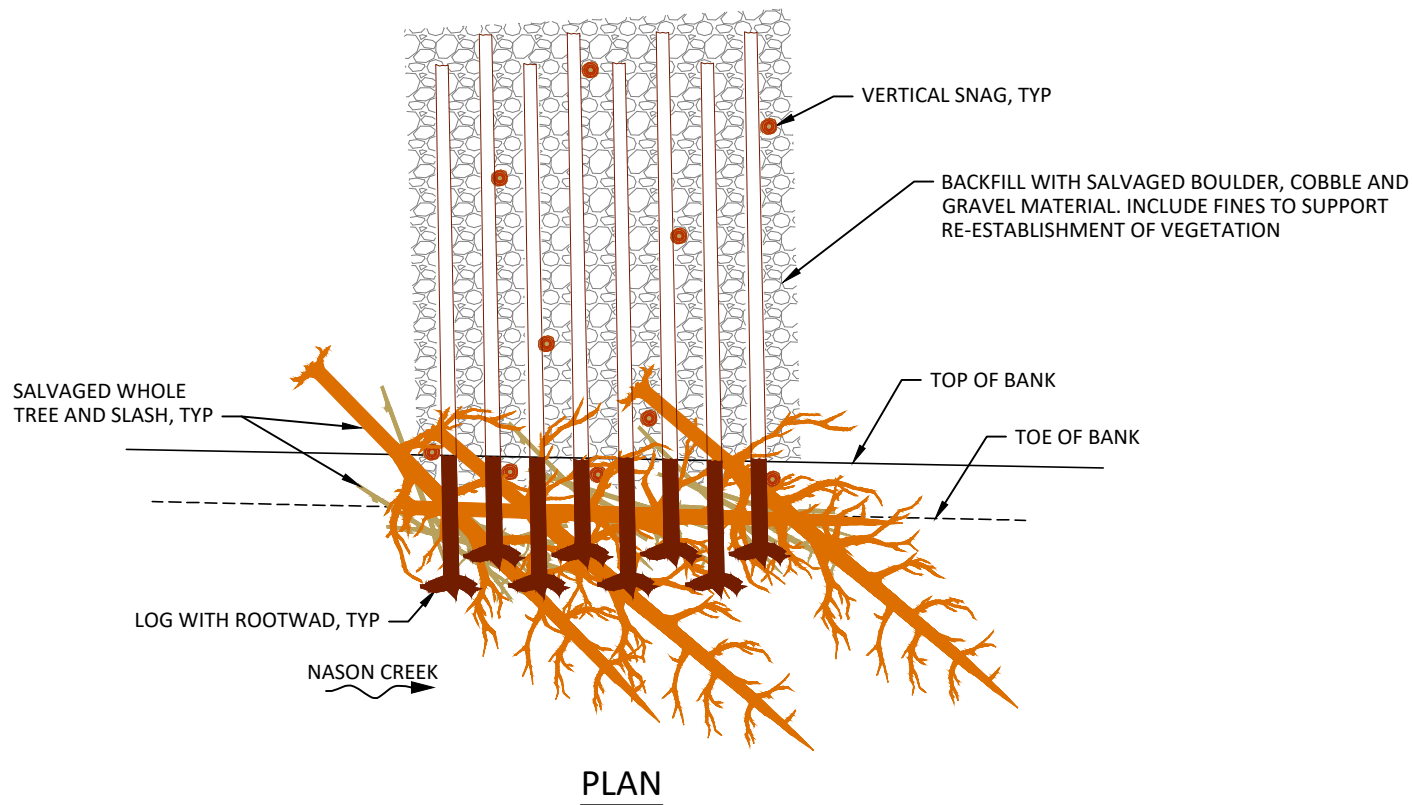


501 Portway Avenue, Suite 101
Hood River, OR 97031
541.386.9003
www.interfluve.com

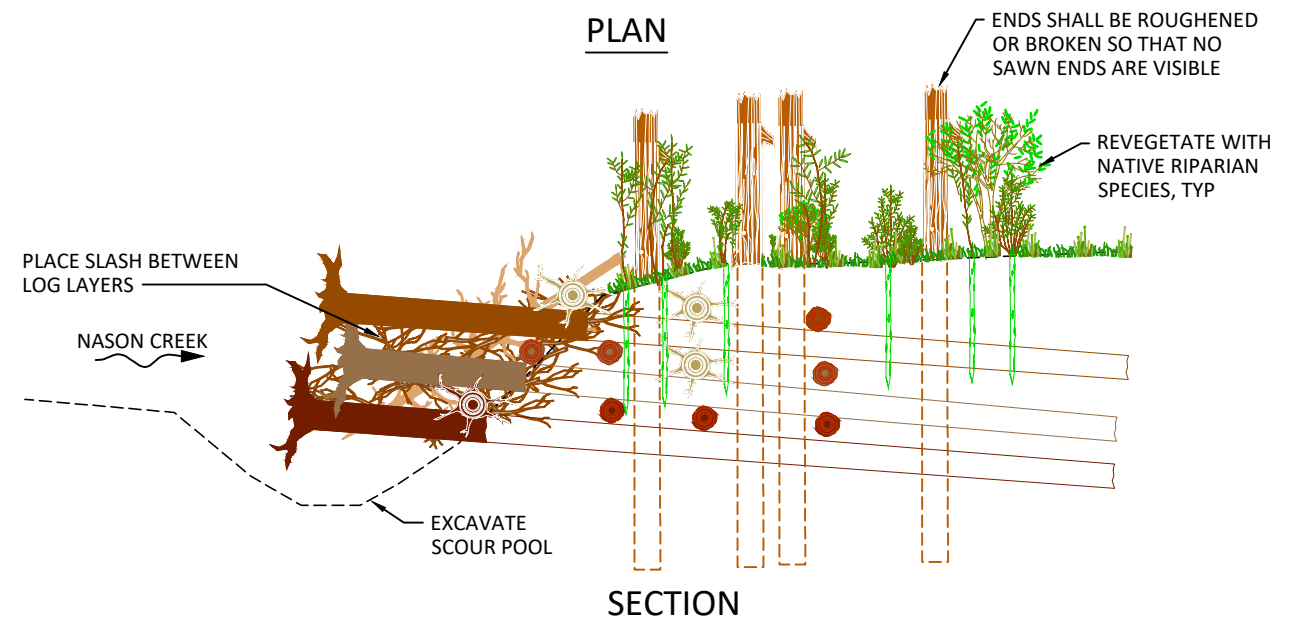
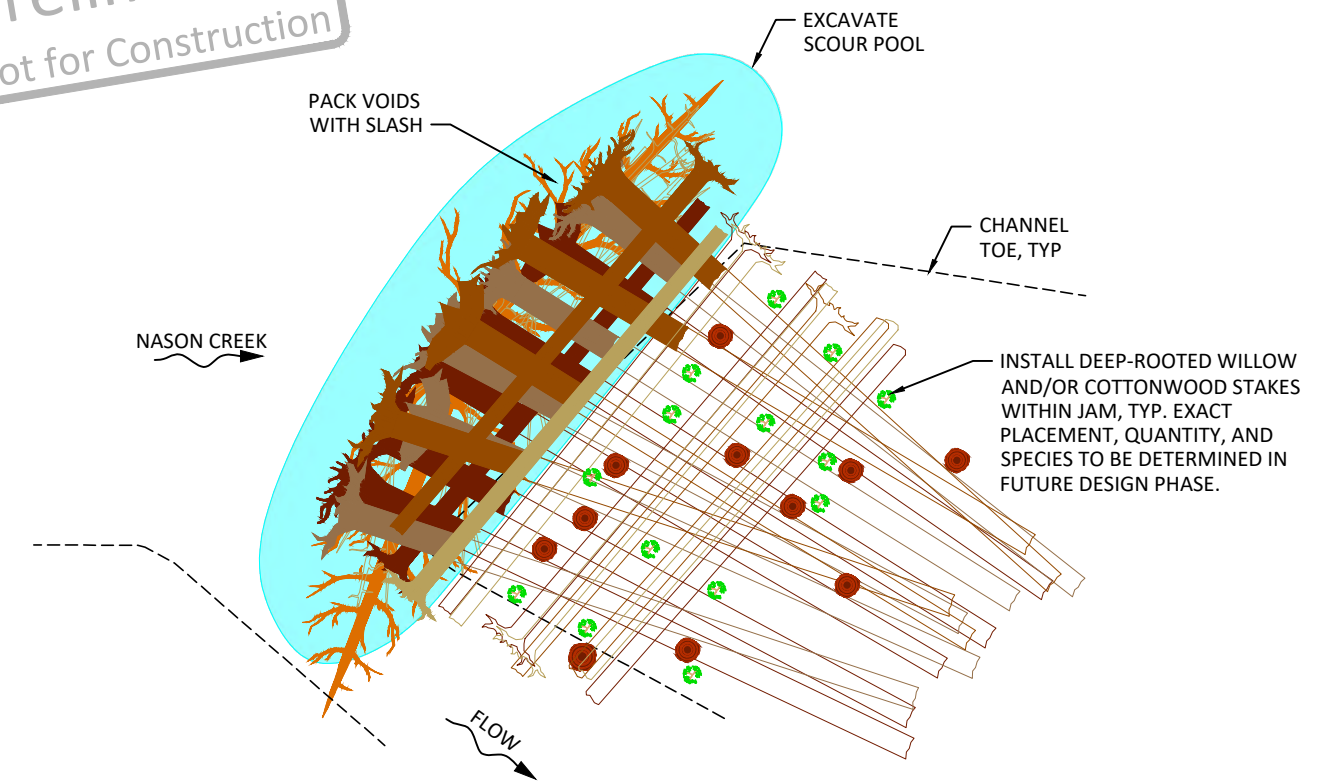
PROPOSED CONDITIONS PLAN (8 OF 8)

SHEET
11 OF 16

Preliminary
Not for Construction



1
12 BANK-BURIED LARGE WOOD STRUCTURE
NOT TO SCALE



2
12 TYPICAL DETAIL - APEX STRUCTURE
NOT TO SCALE

G:\U-Z\Upper Nason Creek Ph 1-2 2002-36\Drawings\1\1 UpperNason D.dwg - nsmith - 3/16/21

NO.	BY	DATE	REVISION DESCRIPTION

NS DRAWN	LS, DM DESIGNED	LS CHECKED
DM APPROVED	3/16/21 DATE	200236 PROJECT

UPPER NASON CREEK
RESTORATION
CONCEPT DESIGN



501 Portway Avenue, Suite 101
Hood River, OR 97031
541.386.9003
www.interfluve.com

TYPICAL DETAILS - LARGE WOOD
STRUCTURES (1 OF 3)

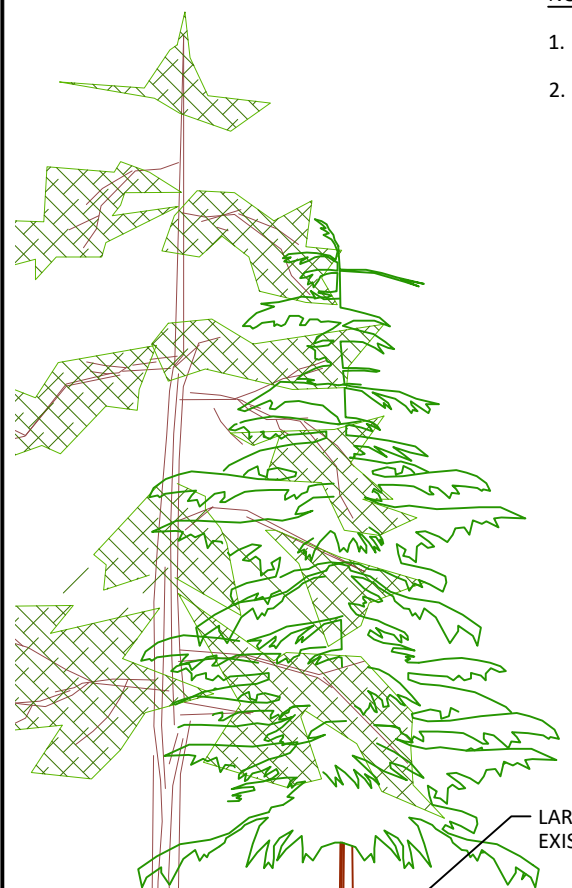


SHEET

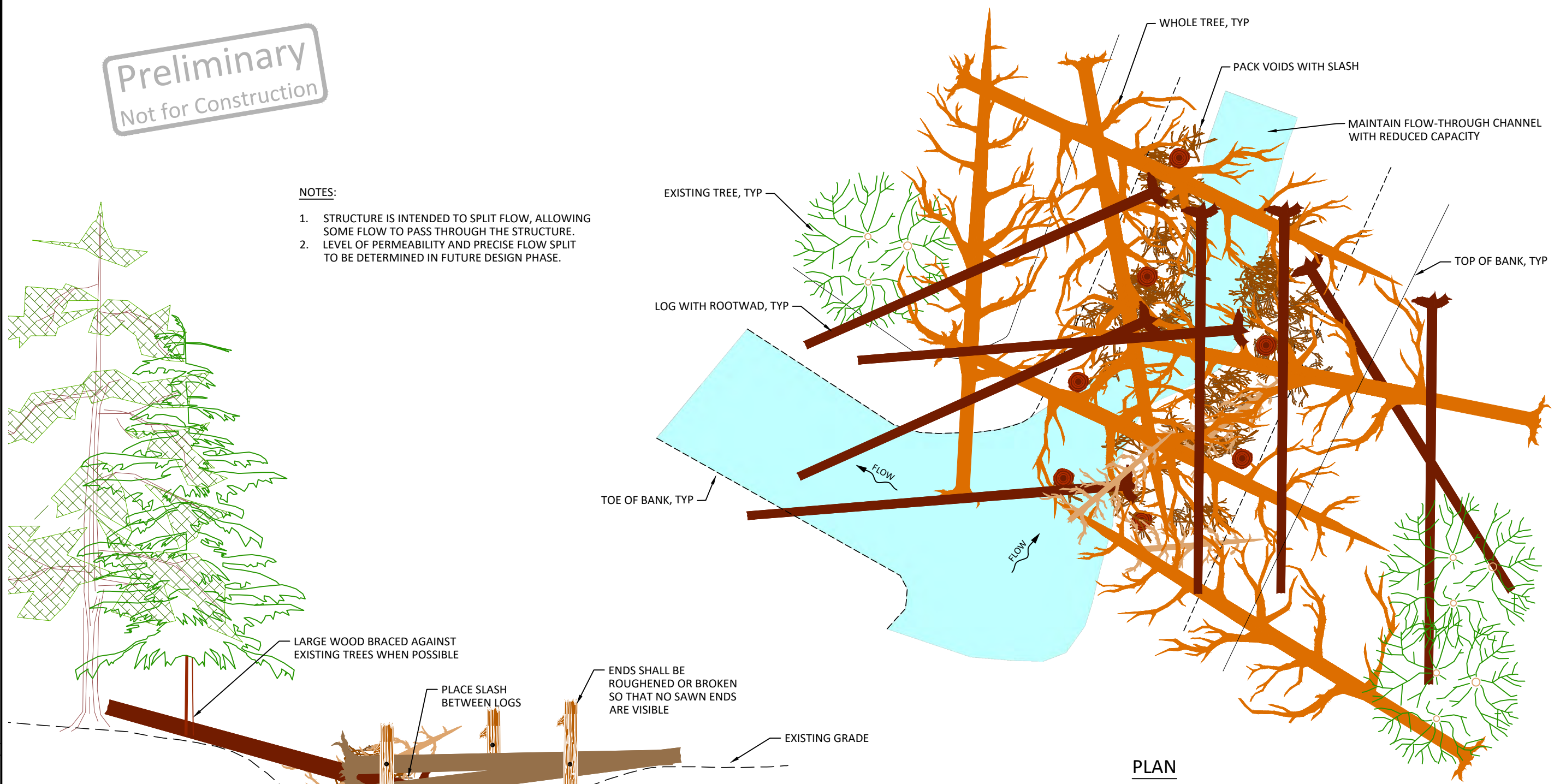
12 OF 16

Preliminary
Not for Construction

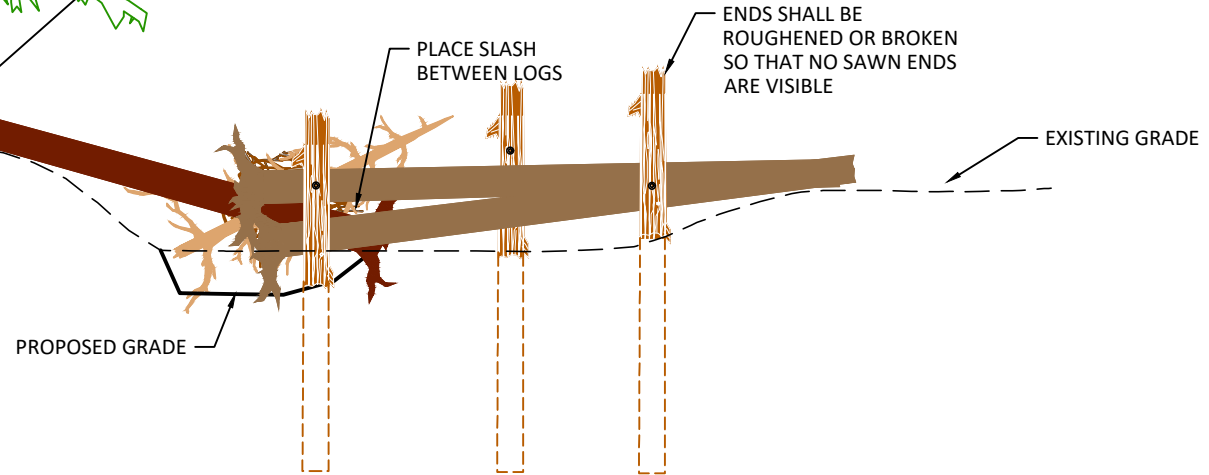
- NOTES:
1. STRUCTURE IS INTENDED TO SPLIT FLOW, ALLOWING SOME FLOW TO PASS THROUGH THE STRUCTURE.
 2. LEVEL OF PERMEABILITY AND PRECISE FLOW SPLIT TO BE DETERMINED IN FUTURE DESIGN PHASE.



LARGE WOOD BRACED AGAINST EXISTING TREES WHEN POSSIBLE



PLAN



SECTION

1
13 TYPICAL DETAIL - COLLUVIAL/ CHANNEL SPANNING STRUCTURE
NOT TO SCALE

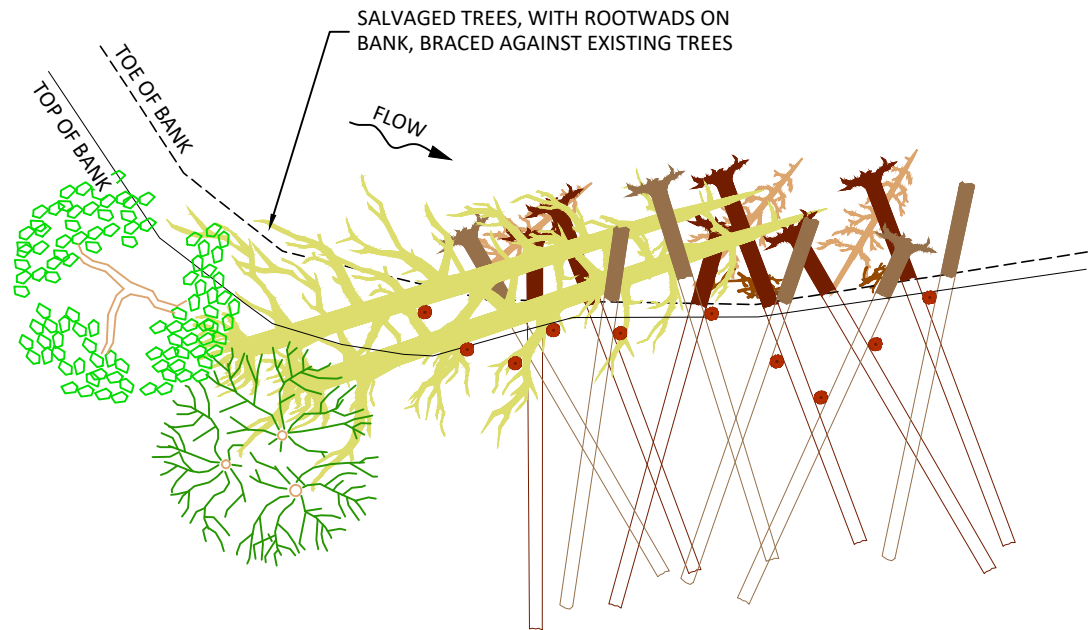


G:\U-Z\Upper Nason Creek Ph 1-2 2002-36\Drawings\1\1 UpperNason_D.dwg - nsmith - 3/16/21

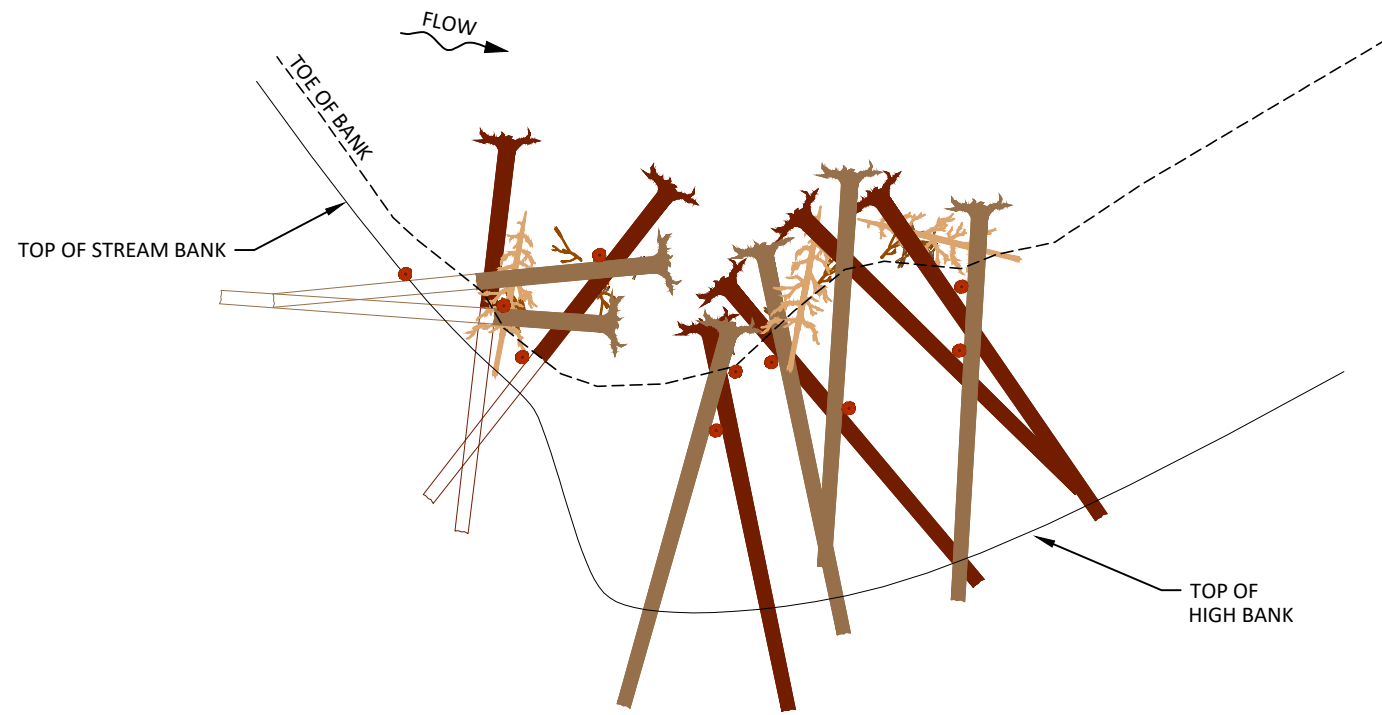
				UPPER NASON CREEK RESTORATION CONCEPT DESIGN			TYPICAL DETAILS - LARGE WOOD STRUCTURES (2 OF 3)		SHEET
									13 OF 16
NO.	BY	DATE	REVISION DESCRIPTION	NS DRAWN	LS, DM DESIGNED	LS CHECKED			
				DM APPROVED	3/16/21 DATE	200236 PROJECT			



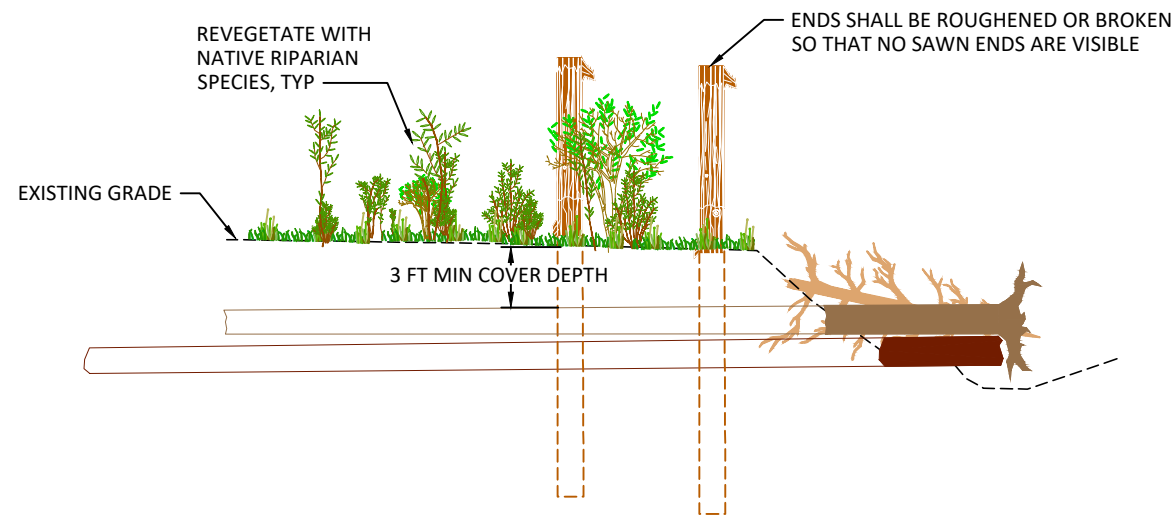
501 Portway Avenue, Suite 101
Hood River, OR 97031
541.386.9003
www.interfluve.com



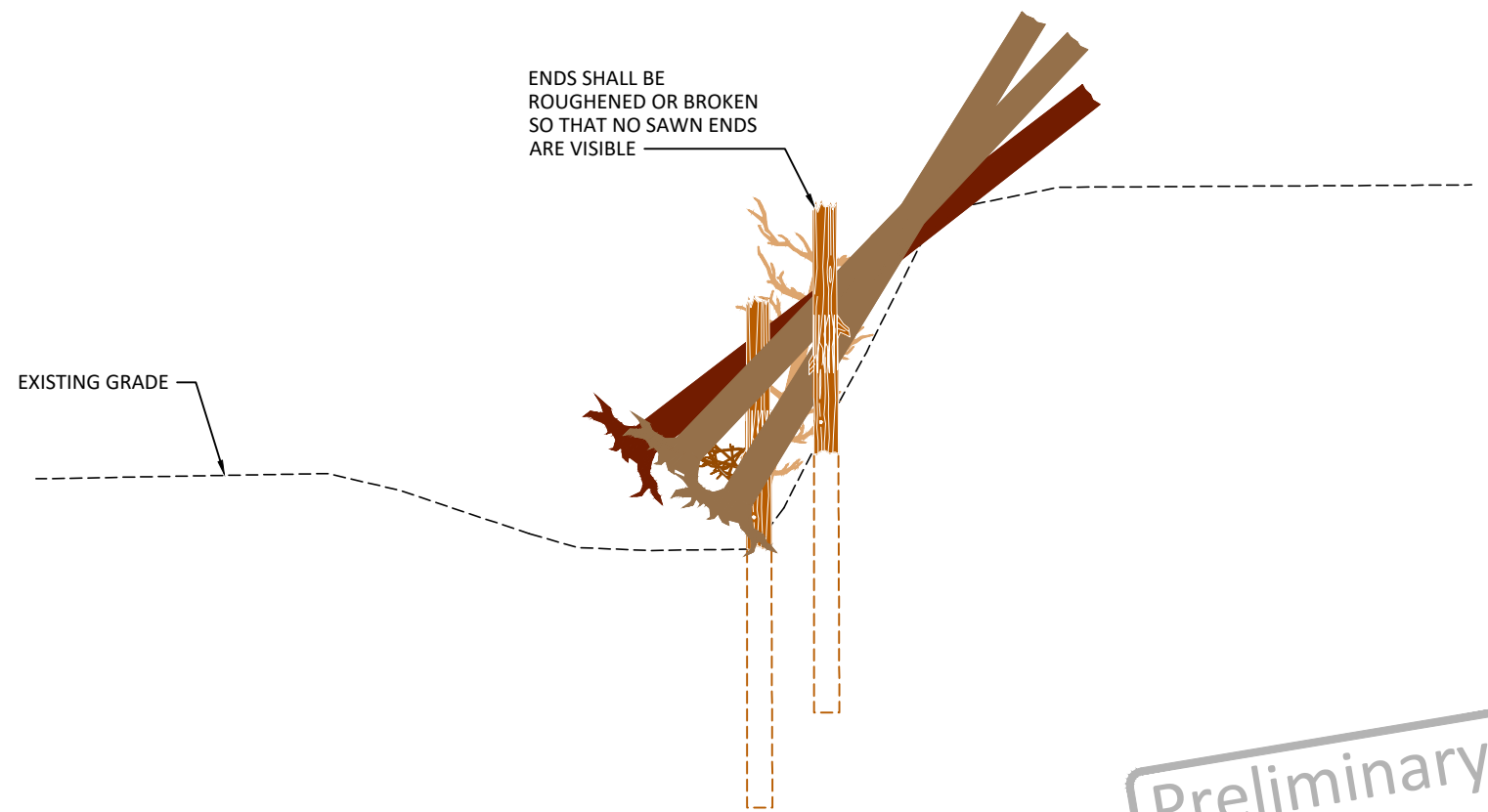
PLAN - TYPE 1



PLAN - TYPE 2



SECTION - STREAM BANK



SECTION - HIGH BANK/ VALLEY WALL

Preliminary
Not for Construction

1
14

TYPICAL DETAIL - HABITAT/ COVER LARGE WOOD

NOT TO SCALE

G:\U\Upper Nason Creek Ph 1-2 2002-36\Drawings\1\1 UpperNason_D.dwg - nsmith - 3/16/21

NO.	BY	DATE	REVISION DESCRIPTION

NS DRAWN	LS, DM DESIGNED	LS CHECKED
DM APPROVED	3/16/21 DATE	200236 PROJECT

UPPER NASON CREEK
RESTORATION
CONCEPT DESIGN



501 Portway Avenue, Suite 101
Hood River, OR 97031
541.386.9003
www.interfluve.com

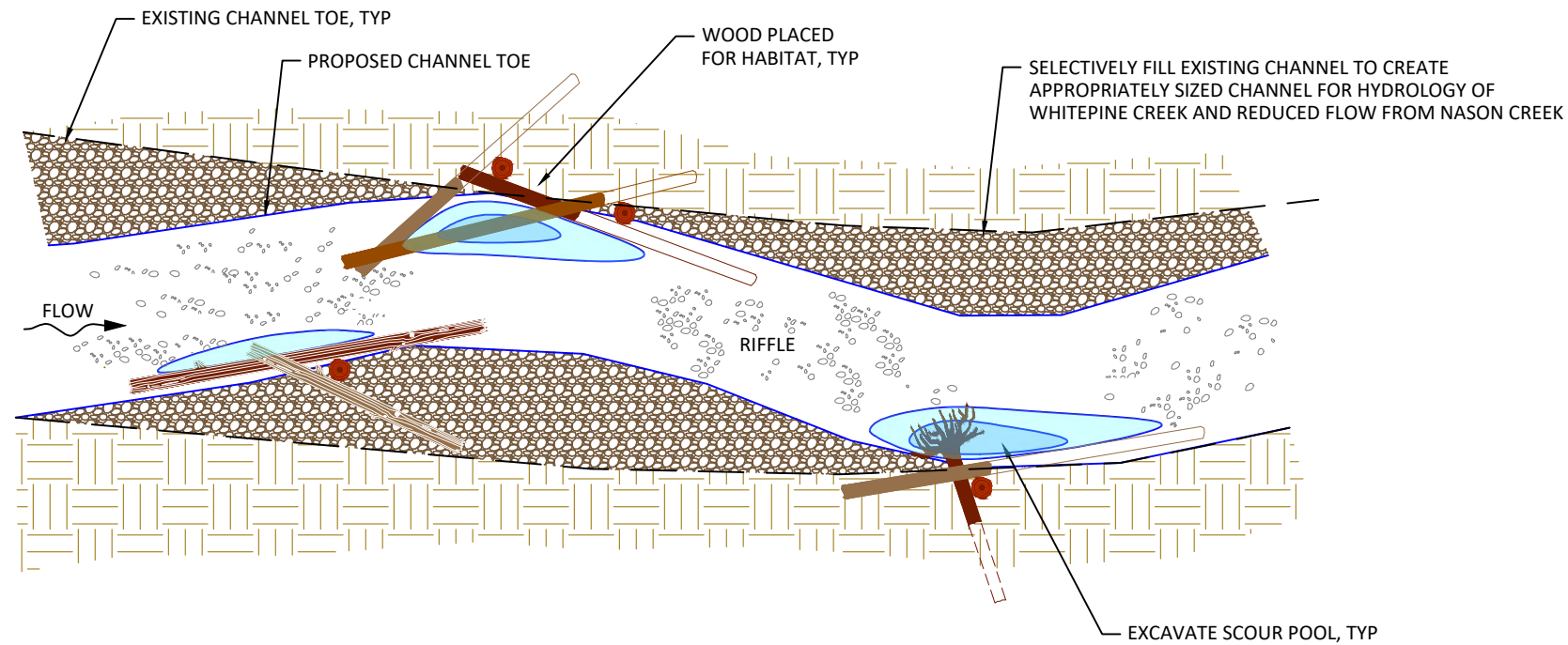
TYPICAL DETAILS - LARGE WOOD
STRUCTURES (3 OF 3)



SHEET

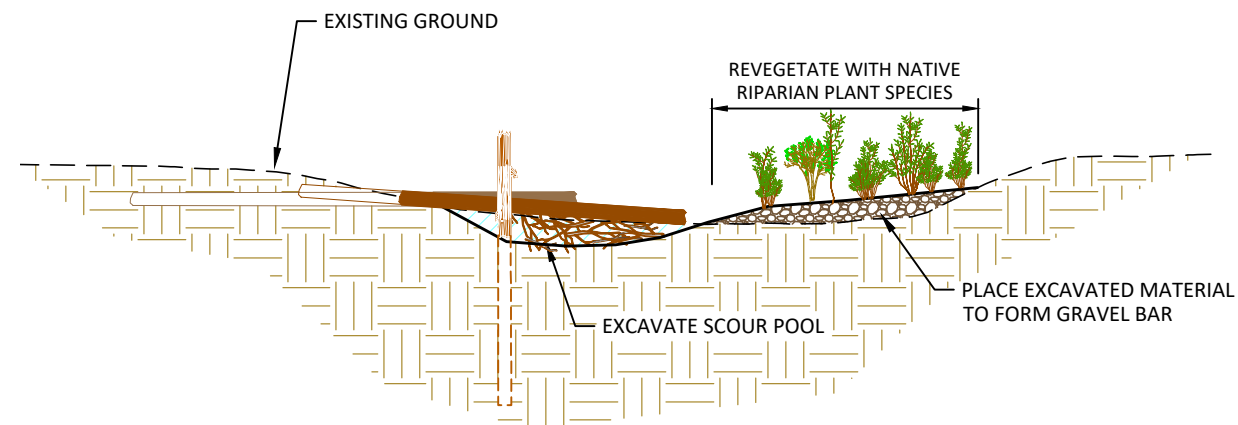
14 OF 16

G:\U\Upper Nason Creek Ph 1-2 2002-36\Drawings\1\1 UpperNason_D.dwg - nsmith - 3/16/21

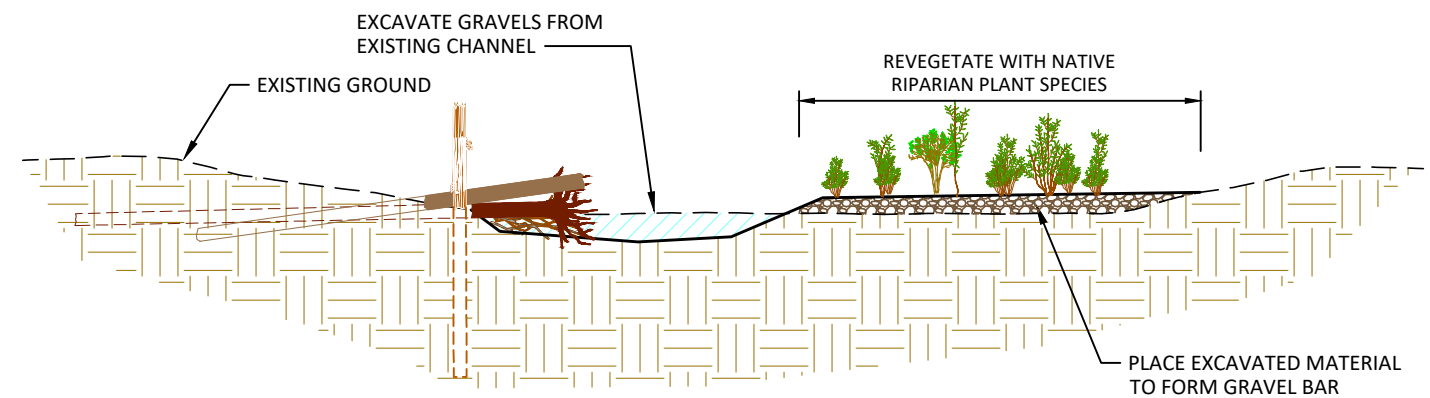


Preliminary
Not for Construction

PLAN



SECTION - UPSTREAM REACH



SECTION - DOWNSTREAM REACH

1 15 TYPICAL DETAIL - BED TREATMENT

NOT TO SCALE



NO.	BY	DATE	REVISION DESCRIPTION

NS	LS, DM	LS
DRAWN	DESIGNED	CHECKED
DM	3/16/21	200236
APPROVED	DATE	PROJECT

UPPER NASON CREEK
RESTORATION
CONCEPT DESIGN

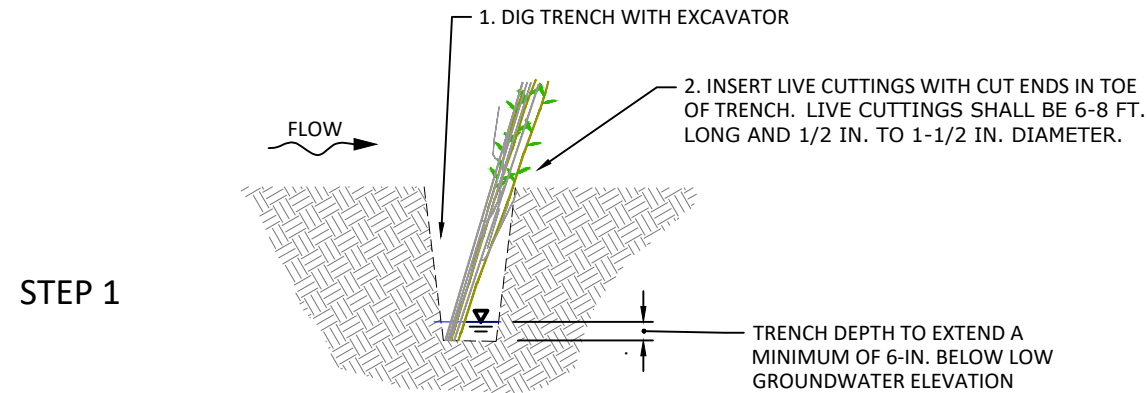


501 Portway Avenue, Suite 101
Hood River, OR 97031
541.386.9003
www.interfluve.com

TYPICAL DETAILS - BED TREATMENTS

SHEET

15 OF 16



STEP 1

PURPOSE:

- PROVIDE ROUGHNESS ON THE FLOODPLAIN AND DISSIPATE ENERGY FROM OVERLAND FLOW
- SLASH PROVIDES FLOODPLAIN ROUGHNESS IN THE SHORT TERM AS LIVE CUTTINGS ESTABLISH

NOTE:

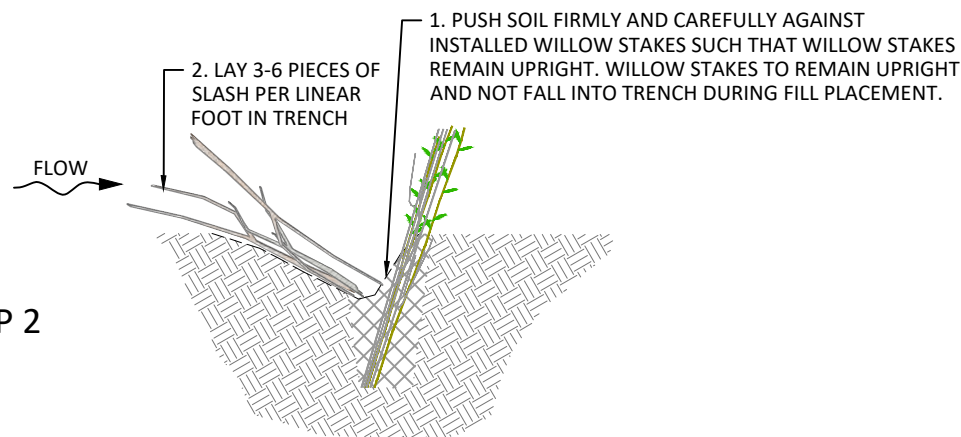
1. INSTALL 3 LIVE CUTTINGS AND 3-6 PIECES OF SLASH PER LINEAR FOOT OF TRENCH.



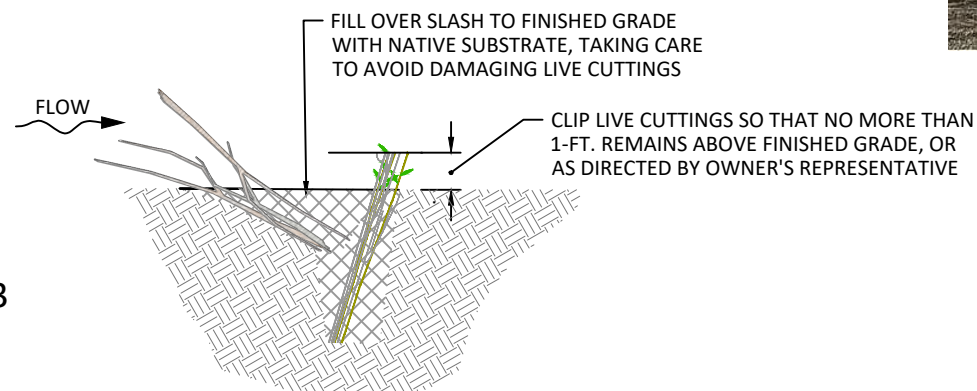
INSTALLATION IN PROGRESS



FINISHED WILLOW BAFFLES

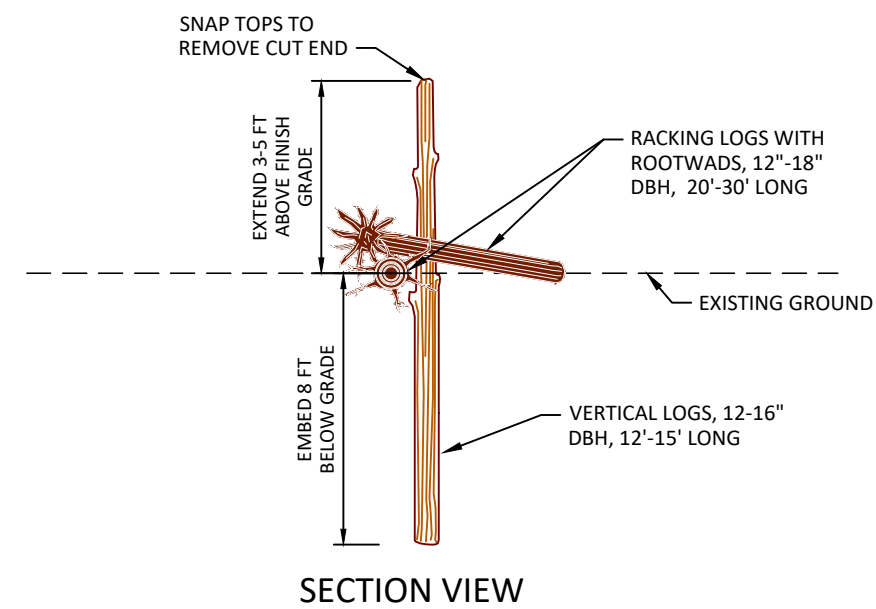
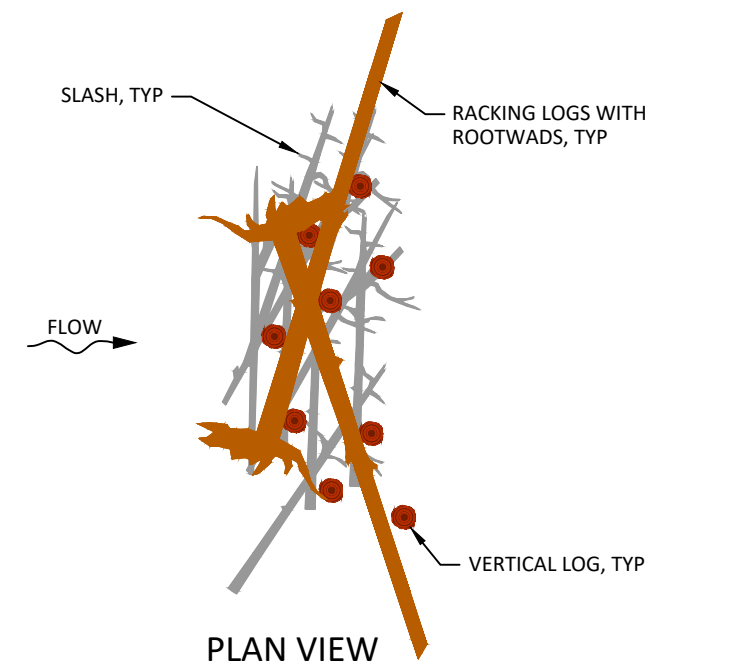


STEP 2



STEP 3

1
16 TYPICAL DETAIL - WILLOW BAFFLE
NOT TO SCALE



2
16 TYPICAL DETAIL - DEFLECTOR STRUCTURE
NOT TO SCALE

Preliminary
Not for Construction



G:\U-Z\Upper Nason Creek Ph 1-2 2002-36\Drawings\16 Upper Nason D.dwg - nsmith - 3/16/21

NO.	BY	DATE	REVISION DESCRIPTION

NS DRAWN	LS, DM DESIGNED	LS CHECKED
DM APPROVED	3/16/21 DATE	200236 PROJECT

UPPER NASON CREEK
RESTORATION
CONCEPT DESIGN



501 Portway Avenue, Suite 101
Hood River, OR 97031
541.386.9003
www.interfluve.com

TYPICAL DETAILS - GRAVEL BAR
ROUGHNESS FEATURES

SHEET
16 OF 16