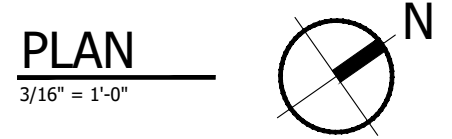
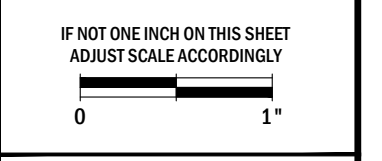


DOOR SCHEDULE			
MARK	SIZE	ROUGH OPENING SIZE	TYPE
1	3'-0" x 7'-0"	3'-4" x 7'-4"	HOLLOW METAL
2	14'-0" x 12'-0"	14'-0" x 12'-0"	OVERHEAD DOOR
3	6'-0" x 7'-0"	6'-8" x 7'-4"	HOLLOW METAL

- GENERAL NOTES:**
- REFER TO SPECIFICATION BIDDERS DESIGN FOR INVITATION TO BID SPECIFICATIONS, DESIGN LOADS, AND ADDITIONAL INFORMATION. ALL REQUIRED ITEMS ARE NOT NOTED OR SHOWN.
 - CONTRACTOR SHALL INSTALL AND MATCH NEW EXTERIOR METAL SIDING AND METAL ROOFING IN COLOR TO EXISTING BUILDING SIDING.
 - CONTRACTOR SHALL MATCH ALL BUILDING, DOOR, CORNER, AND OPENING TRIM COLOR WITH EXISTING BUILDING.
 - CONTRACTOR SHALL PROVIDE METAL DRIP FLASHING OVER ALL OPENINGS, MATCH EXISTING, AND PROVIDE SEALANT CAULK FOR WEATHER TIGHTNESS.
 - PROVIDE BACKING AND BLOCKING IN PARTITIONS FOR ALL WALL MOUNTED MECHANICAL, ELECTRICAL, FIXTURES AND ACCESSORIES, I.E. TOILET PARTITIONS, RESTROOM ACCESSORIES, CASEWORK, FIRE EXTINGUISHERS, DOOR STOPS, SHELVING, WALL BUMPERS, CORNER GUARDS, GRAB BARS, EQUIPMENT RACKS, SPECIAL SIGNAGE AND SIMILAR ITEMS. THE USE OF HOLLOW WALL ANCHORS AND TOGGLE BOLTS ARE NOT PERMITTED.
 - ↑ - INDICATES SLOPE DIRECTION. SLOPE TO DRAIN AT 1/4" PER FOOT UNLESS NOTED OTHERWISE.



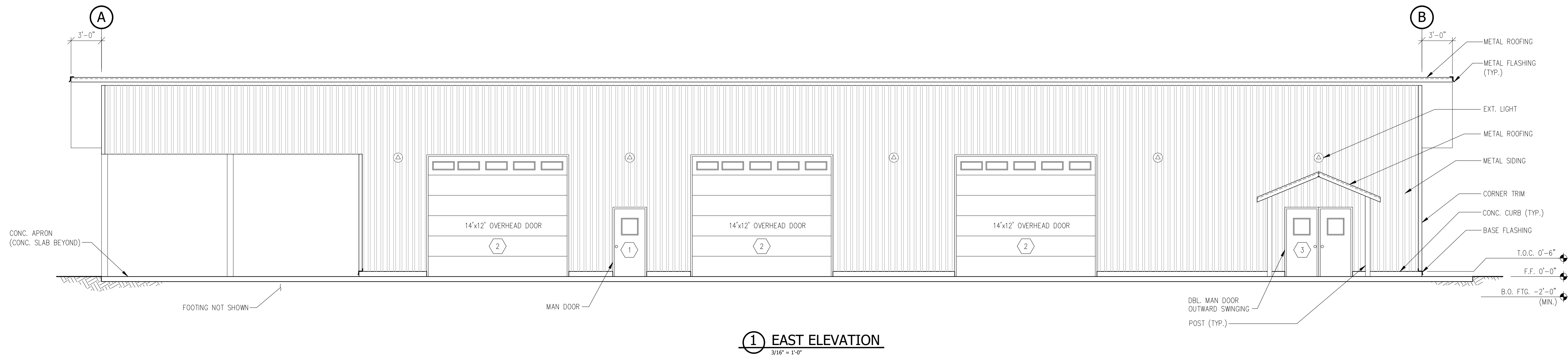
**YAKAMA NATION FISHERIES
MID-COLUMBIA FIELD STATION
STORAGE BUILDING**



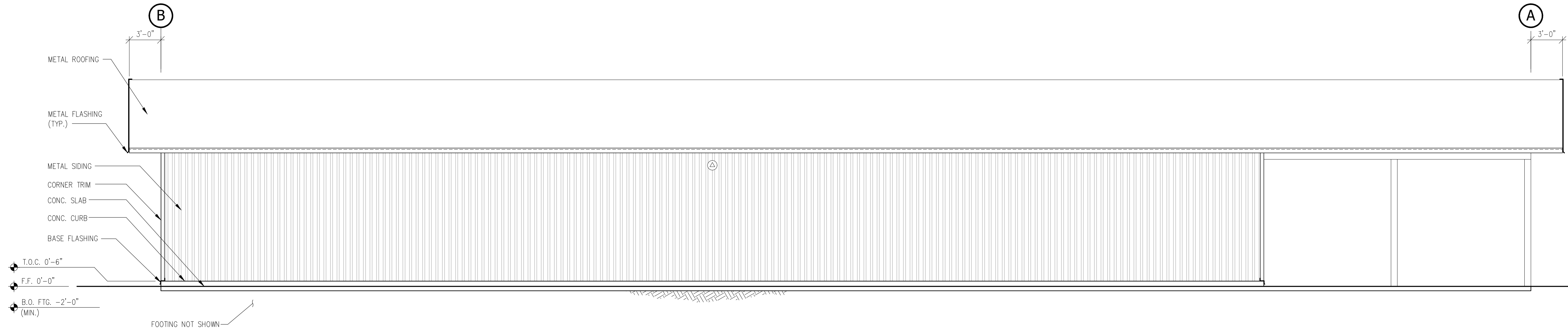
PLAN
S1.0

REV	DATE	DESCRIPTION
1	8/01/2022	IMP SET

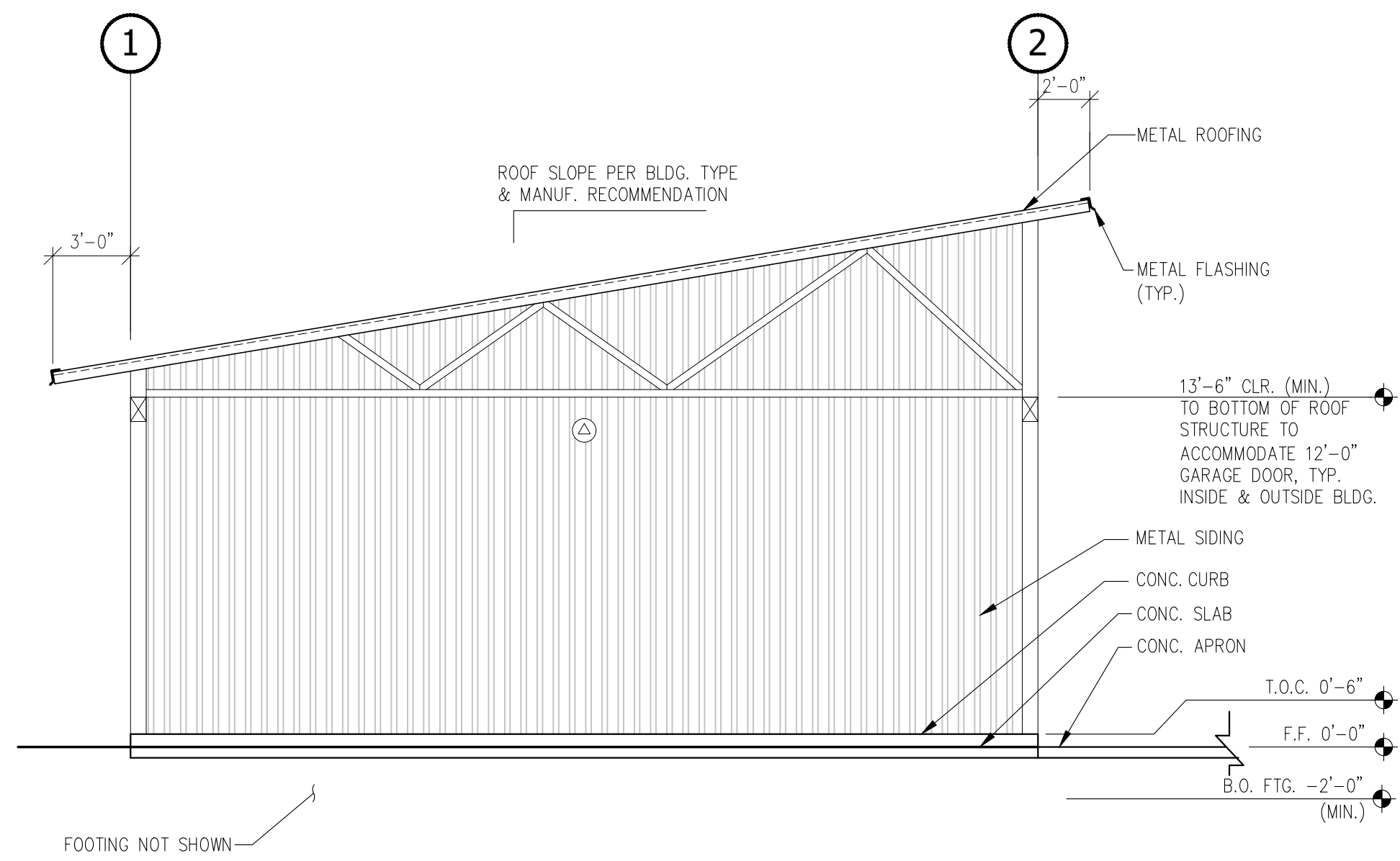
DRAWN BY: JP/JDA
CHECKED BY: XXX



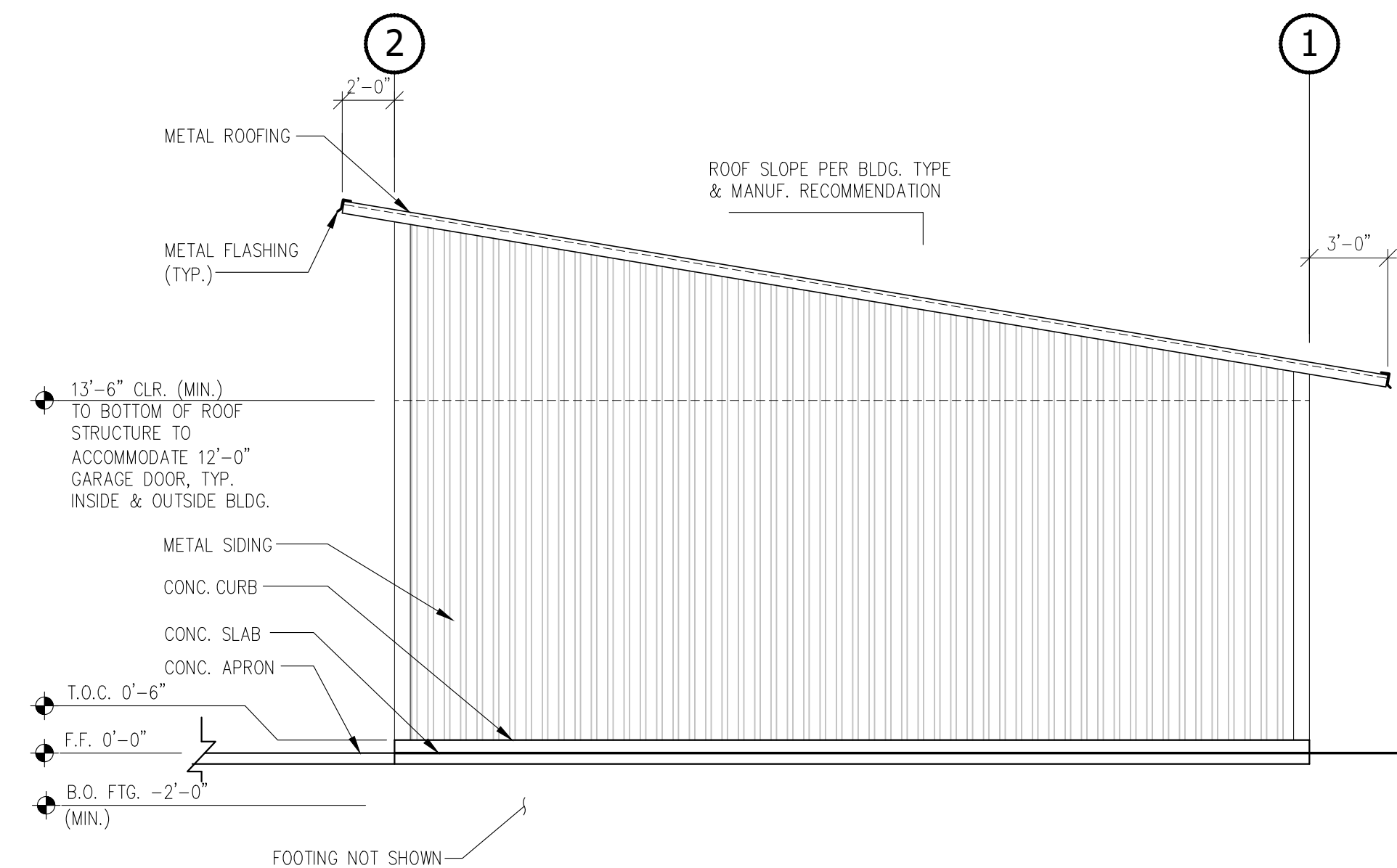
① EAST ELEVATION
3/16" = 1'-0"



② WEST ELEVATION
3/16" = 1'-0"



③ SOUTH ELEVATION
3/16" = 1'-0"



④ NORTH ELEVATION
3/16" = 1'-0"

REV	DATE	DESCRIPTION
1	8/01/2022	IMP SET

PACIFIC ENGINEERING
 CIVIL, MECHANICAL, ELECTRICAL, PLUMBING
 200 S. COLUMBIA STREET, SUITE 300, WENATCHEE, WA 98801
 (509) 662-1161 www.pacificengineering.net

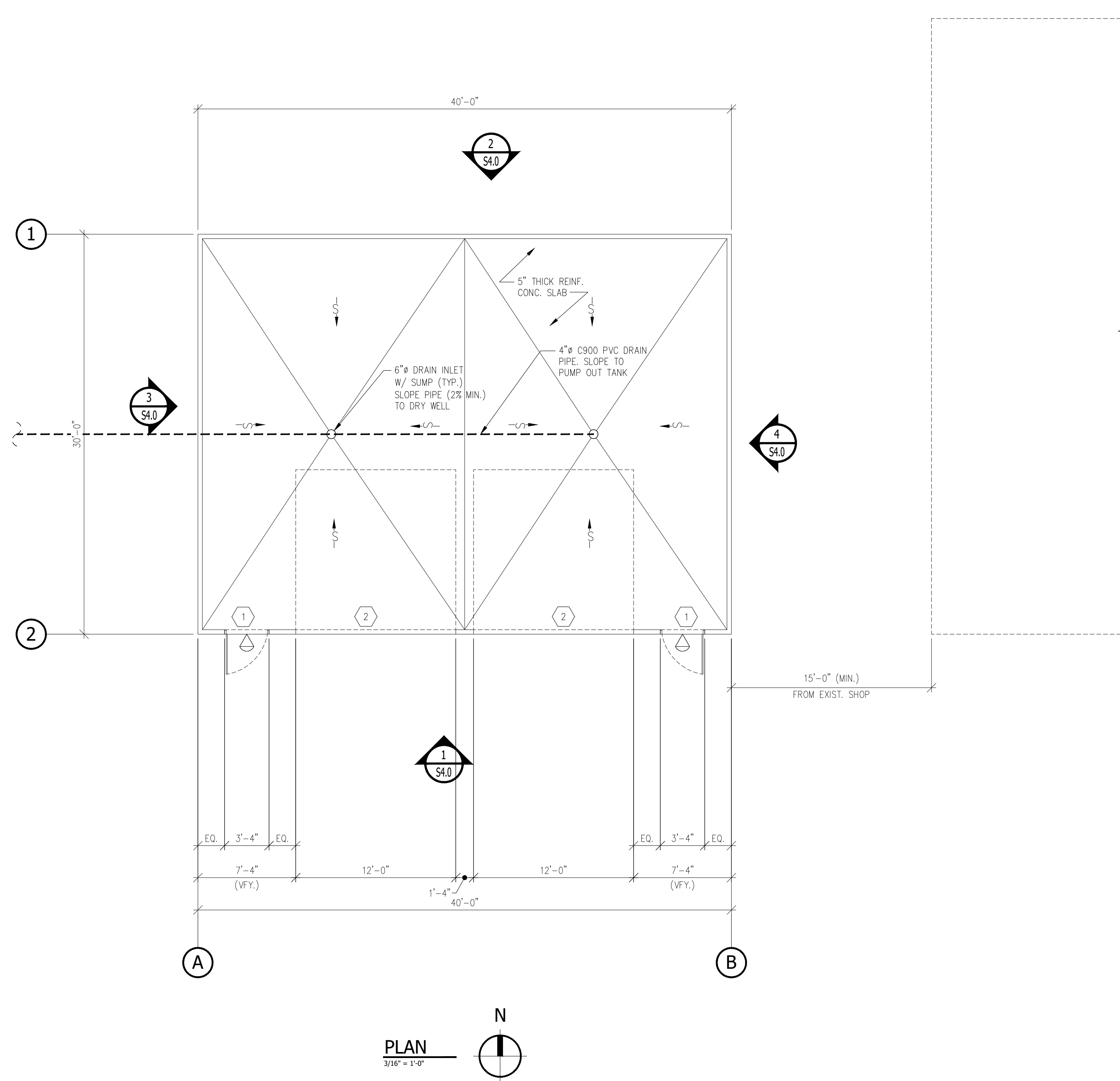
**YAKAMA NATION FISHERIES
 MID-COLUMBIA FIELD STATION
 STORAGE BUILDING**

PESHASTIN, WA
 PROJECT NO. 14222C
 DRAWN BY: JP/JDA
 CHECKED BY: XXX

IF NOT ONE INCH ON THIS SHEET
 ADJUST SCALE ACCORDINGLY

ELEVATIONS

S2.0

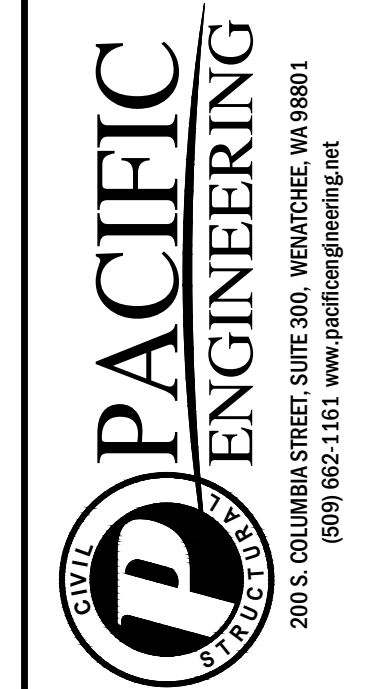


DOOR SCHEDULE			
MARK	SIZE	ROUGH OPENING SIZE	TYPE
1	3'-0" x 7'-0"	3'-4" x 7'-4"	HOLLOW METAL
2	12'-0" x 12'-0"	12'-0" x 12'-0"	OVERHEAD DOOR

GENERAL NOTES:

- REFER TO SPECIFICATION BIDDERS DESIGN FOR INVITATION TO BID SPECIFICATIONS, DESIGN LOADS, AND ADDITIONAL INFORMATION. ALL REQUIRED ITEMS ARE NOT NOTED OR SHOWN.
- CONTRACTOR SHALL INSTALL AND MATCH NEW EXTERIOR METAL SIDING AND METAL ROOFING IN COLOR TO EXISTING BUILDING SIDING.
- CONTRACTOR SHALL MATCH ALL BUILDING, DOOR, CORNER, AND OPENING TRIM COLOR WITH EXISTING BUILDING.
- CONTRACTOR SHALL PROVIDE METAL DRIP FLASHING OVER ALL OPENINGS, MATCH EXISTING, AND PROVIDE SEALANT CAULK FOR WEATHER TIGHTNESS.
- PROVIDE BACKING AND BLOCKING IN PARTITIONS FOR ALL WALL MOUNTED MECHANICAL, ELECTRICAL, FIXTURES AND ACCESSORIES, I.E. CASEWORK, FIRE EXTINGUISHERS, DOOR STOPS, SHELVING, WALL BUMBERS, CORNER GUARDS, EQUIPMENT RACKS, SPECIAL SIGNAGE AND SIMILAR ITEMS. THE USE OF HOLLOW WALL ANCHORS AND TOGGLE BOLTS ARE NOT PERMITTED.
- ↑ S - INDICATES SLOPE DIRECTION. SLOPE TO DRAIN AT 1/4" PER FOOT UNLESS NOTED OTHERWISE.

REV	DATE	DESCRIPTION	REV	DATE	DESCRIPTION
1	8/01/2022	BID SET			



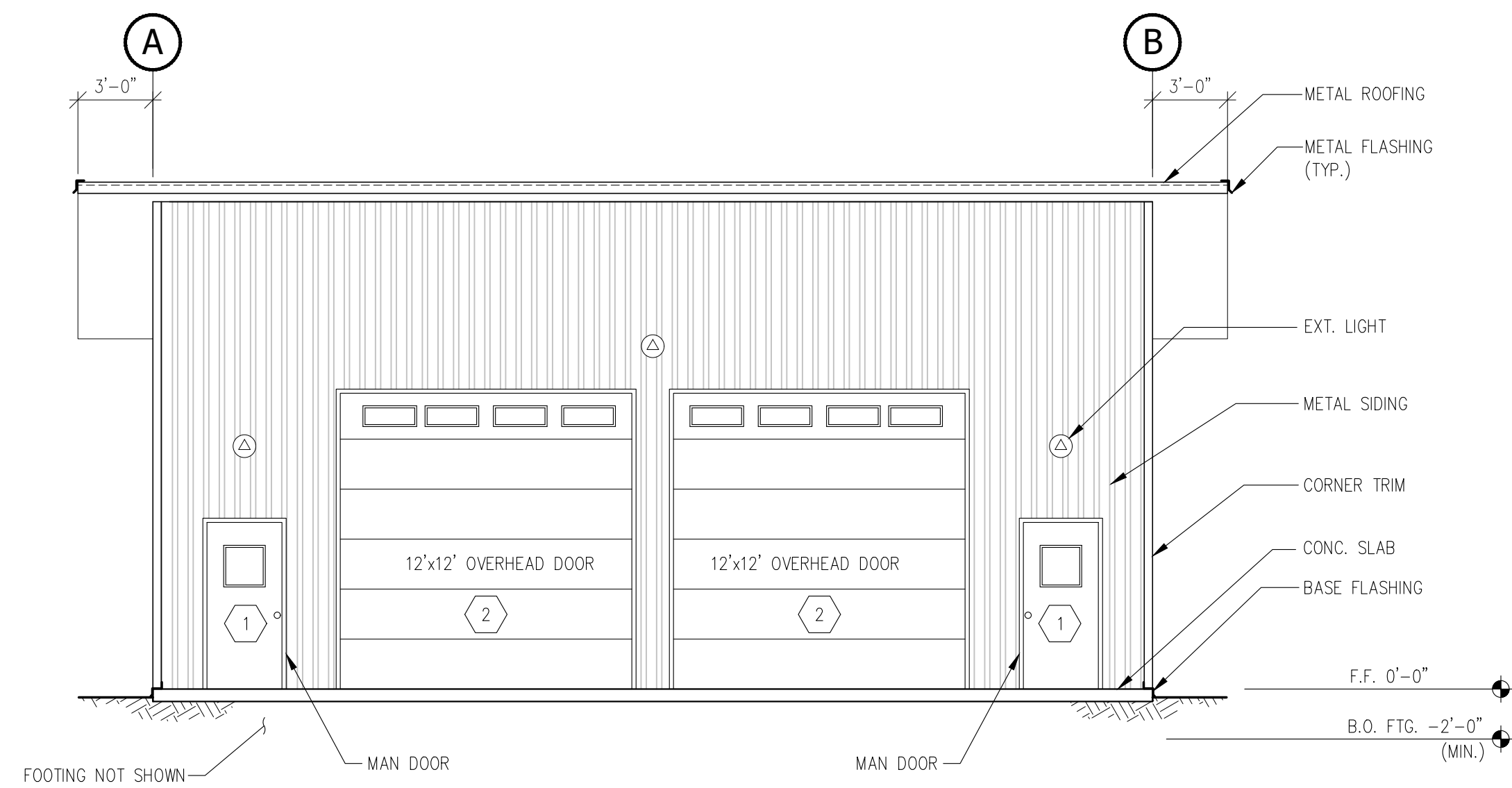
**YAKAMA NATION FISHERIES
MID-COLUMBIA FIELD STATION
STORAGE BUILDING**

PESHASTIN, WA
PROJECT NO. 14222C
DRAWN BY: JP/ADA
CHECKED BY: XXX

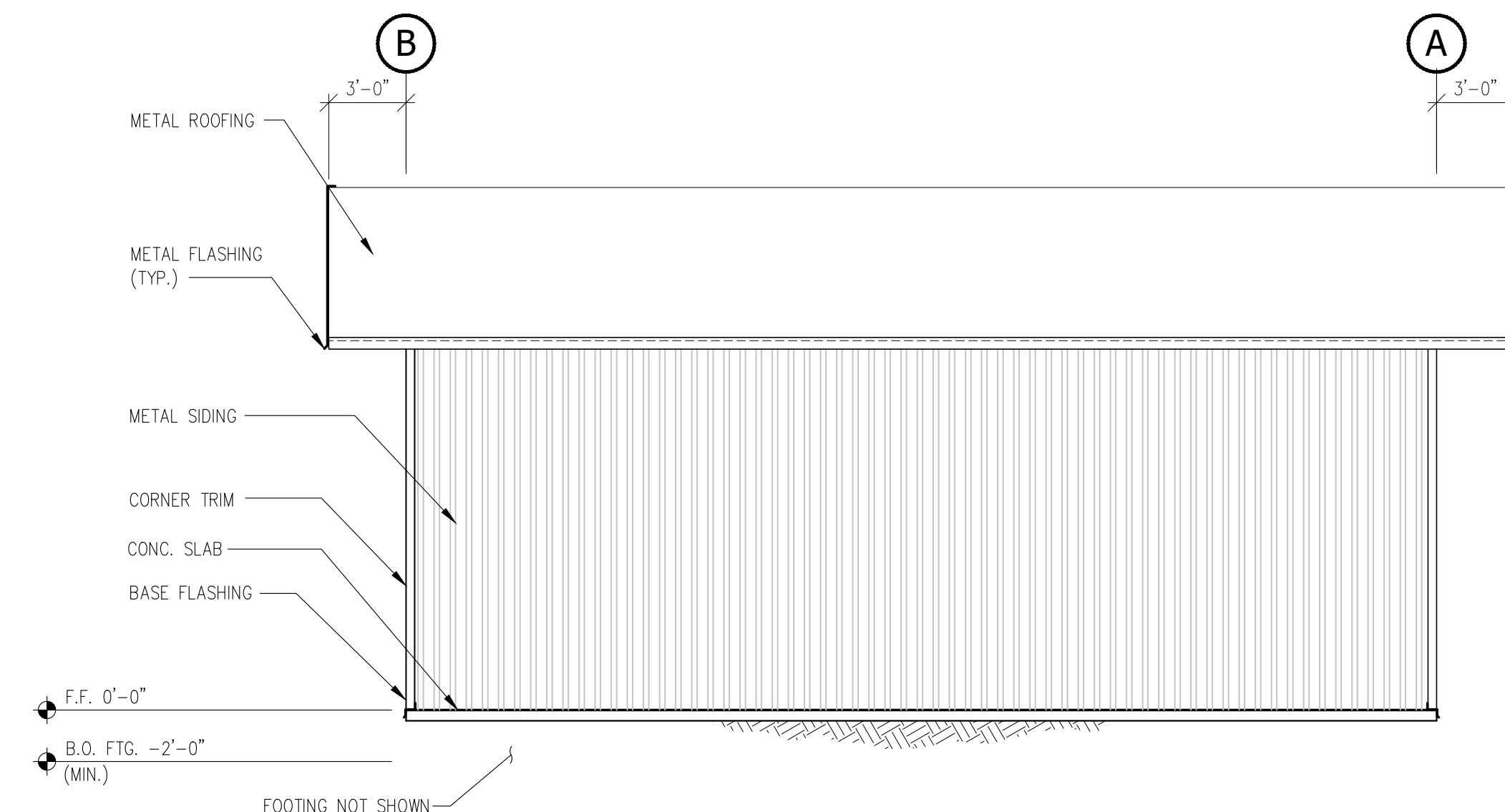
IF NOT ONE INCH ON THIS SHEET
ADJUST SCALE ACCORDINGLY

PLAN

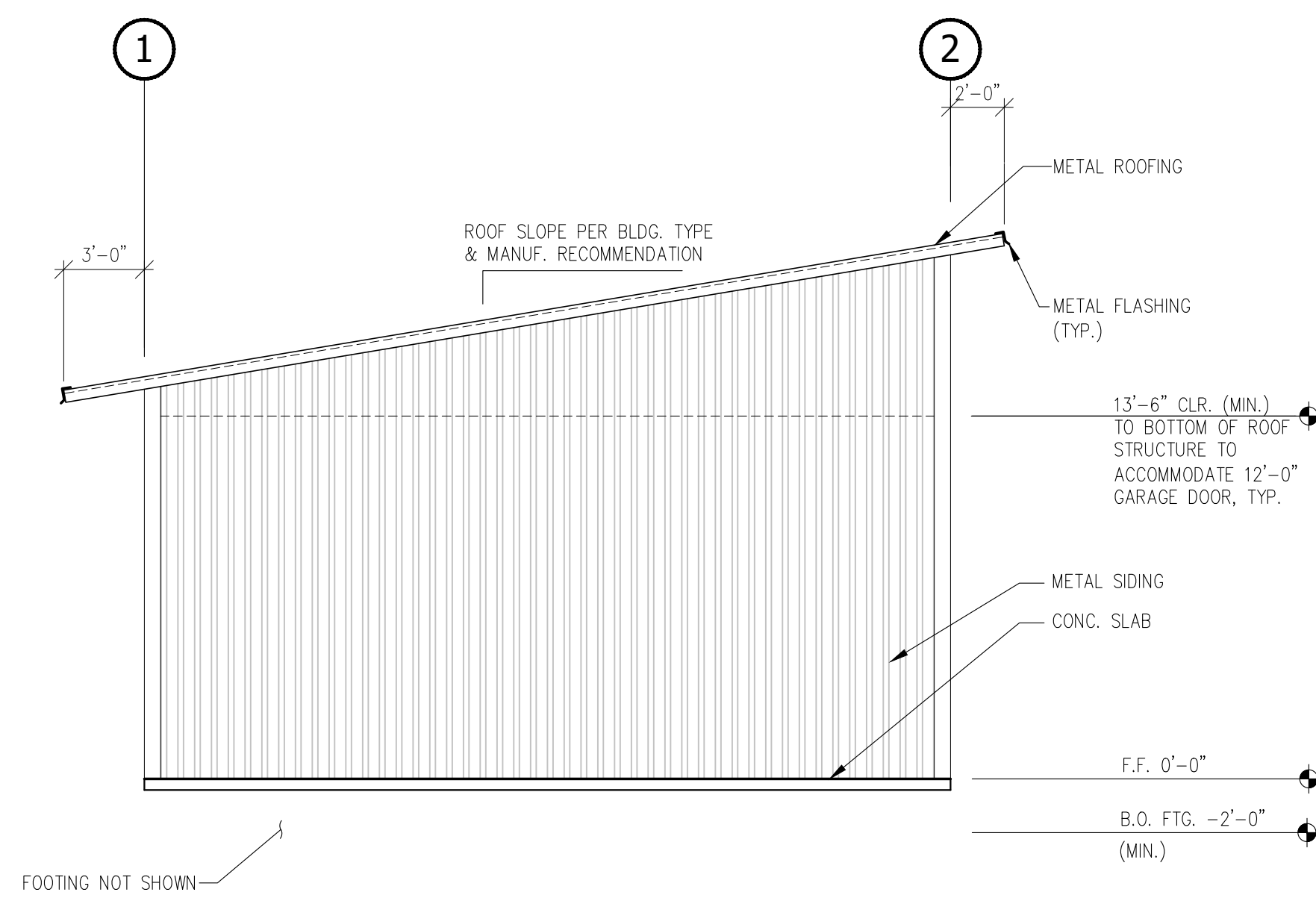
S3.0



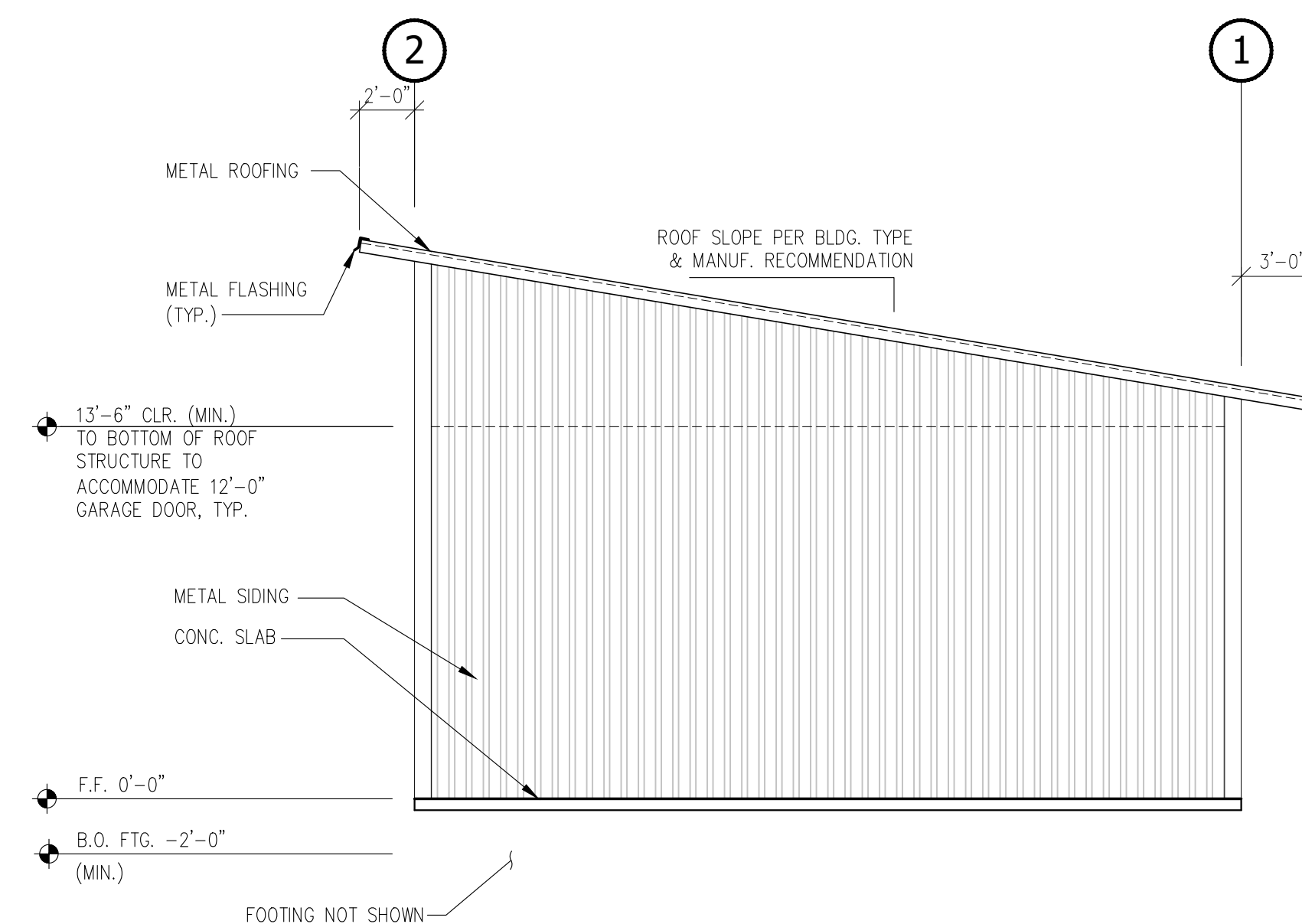
① EAST ELEVATION
3/16" = 1'-0"



② WEST ELEVATION
3/16" = 1'-0"



③ SOUTH ELEVATION
3/16" = 1'-0"



④ NORTH ELEVATION
3/16" = 1'-0"

REV	DATE	DESCRIPTION
1	8/01/2022	BD/SET



**YAKAMA NATION FISHERIES
MID-COLUMBIA FIELD STATION
STORAGE BUILDING**

PESHASTIN, WA
PROJECT NO. 14222CC
DRAWN BY: JP/ADA
CHECKED BY: XXX

IF NOT ONE INCH ON THIS SHEET
ADJUST SCALE ACCORDINGLY

ELEVATIONS

S4.0