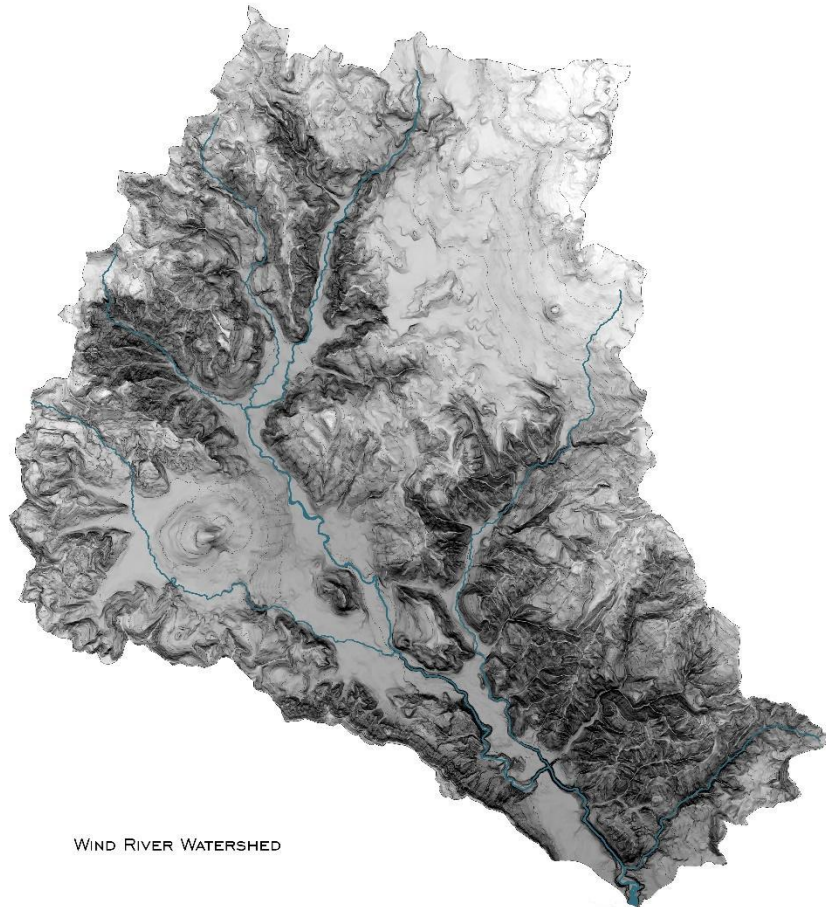


Addendum 1
Contractor's Bid Package
for
Lower Dry Creek Geomorphic Assessment
Wind River, Carson, WA

Response Deadline: April 15th, 2024, 5:00 pm



WIND RIVER WATERSHED

Yakama Nation Fisheries - Klickitat Field Office
P.O. Box 215, Klickitat, WA 98628
Phone: 509-369-3567 | E-mail: phayden@ykfp.org

Anticipated Timeline

Proposal Submission Deadline:	April 15, 2024 – 5:00pm
Tentative Award Selection:	April 30, 2024
Project Initiation (estimate):	June 1, 2024
Survey	July/Aug 2024
Alternatives Analysis/Conceptual Design	October 2024
30% Progress	December 2024
60% Progress	March 2025
Final Products completed	June 1, 2025

Please send questions in writing so responses can be shared with other interested parties.

Revisions, updates and answered questions will be posted to:

<https://yakamafish-nsn.gov/contact-us/open-rfqrfps>

New webpage: <https://yakamafish-nsn.gov/lower-dry-creek-geomorphic-assessment>

Please check this site before submitting your proposal.

The Request for Proposals (RFP) is modified as set forth in this Addendum. The original RFP Documents remain in full force and effect, except as modified by this Addendum, which is hereby made part of the RFP. Respondent shall take this Addendum into consideration when preparing and submitting its Proposal.

Modifications:

V- Minimum Qualifications

Project Approach

The Proposal will be evaluated based on the approach and proposed solutions for geomorphic assessment, implementation plan (fit-in-the-field site plan for lower 1.5 miles), and reach delineation of the lower 1.5 miles.

Clarifications:

I- Project Overview

We are looking to have a completed Implementation Plan to inform fit-in-the-field placement of large wood (not the typical 30/60/Final design approach). More or less a Site Plan, with wood placement locations and habitat types, that we can reference in the field and will back up our objective of improving salmonid habitat.

II- Background

- Dry creek runs dry in August-September each year through this lower reach. The portion above stays wetted perennially. There has been lots of speculation over the years of why the lower reach goes subsurface (lava tube, etc.), if there is a clear causal mechanism we would like to uncover that, otherwise we want to characterize what the response to wood would be and if intervening should be a priority.
- The design metrics we are seeking to obtain are to improve salmonid habitat for the life stages that are utilized in Dry Creek. In short, our funding sources are not restrictive to specific metrics.
- USFS-GPNF is a collaborative partner (funding, permitting, wood source), they have taken care of permitting associated with this project and will be providing them to YN. It is ARBO, but it will not restrict the restoration design.
- BPA is funding the geomorphic assessment, deliverables are to complete a geomorphic assessment.
- USFS-GPNF is funding construction, deliverables are to complete a salmonid focused restoration on the lower 1.5 miles of Dry Creek.

III- Scope of Work

F. For this RFP, we are looking for an hourly cost estimate, for construction oversight support. The consultant will be onsite for 1-3 days for the more complex aspects to the design.

YN- Staff Duties:

- During construction, YN will have a project manager onsite every day for project oversight.
- YN will be obtaining drone footage of the lower 1.5 miles of Reach 1 this spring.

IV- Timing and Duration

The 30% & 60% timelines are for in-house reviews and discussions with YN on progress and direction, not for submittals to funding agencies.

General:

- **There is not a pre-site visit tour for this RFP.**
- **We are not releasing a budget for this project.**
- **There are no flow records for Dry Creek, USGS has a gauge station located close to Carson.**
- **2015 is the most recent LiDAR available.**