

Addendum 1
Contractor's Bid Package
FOR
Simcoe Springs Restoration Project



January 2, 2024

Prepared By:

Yakama Nation Fisheries - Klickitat Field Office
P.O. Box 215
Klickitat, WA 98628
Phone: 509-369-3567
E-mail: phayden@ykfp.org

Critical Dates:

Question Submission Deadline:	February 9, 2024 – 17:00 pm
Bid Submission Deadline:	February 20, 2024 – 12:00 pm
Tentative Award Selection:	March 1, 2024
Project Initiation (est):	April 1, 2024
Project Completion (est):	May 15, 2024

The Request for Proposals (RFP) is modified as set forth in this Addendum. The original RFP Documents remain in full force and effect, except as modified by this Addendum, which is hereby made part of the RFP. Respondent shall take this Addendum into consideration when preparing and submitting its Proposal.

Modifications:

Appendix B – additions below

Specifications:

- **Schedule 80 on all PVC piping**
- **Galvanized piping for all plumbing underneath troughs and gravel skirts**



Figure 9. Examples of new troughs [type 1](#) or equivalent, subject to OWNER review and approval.

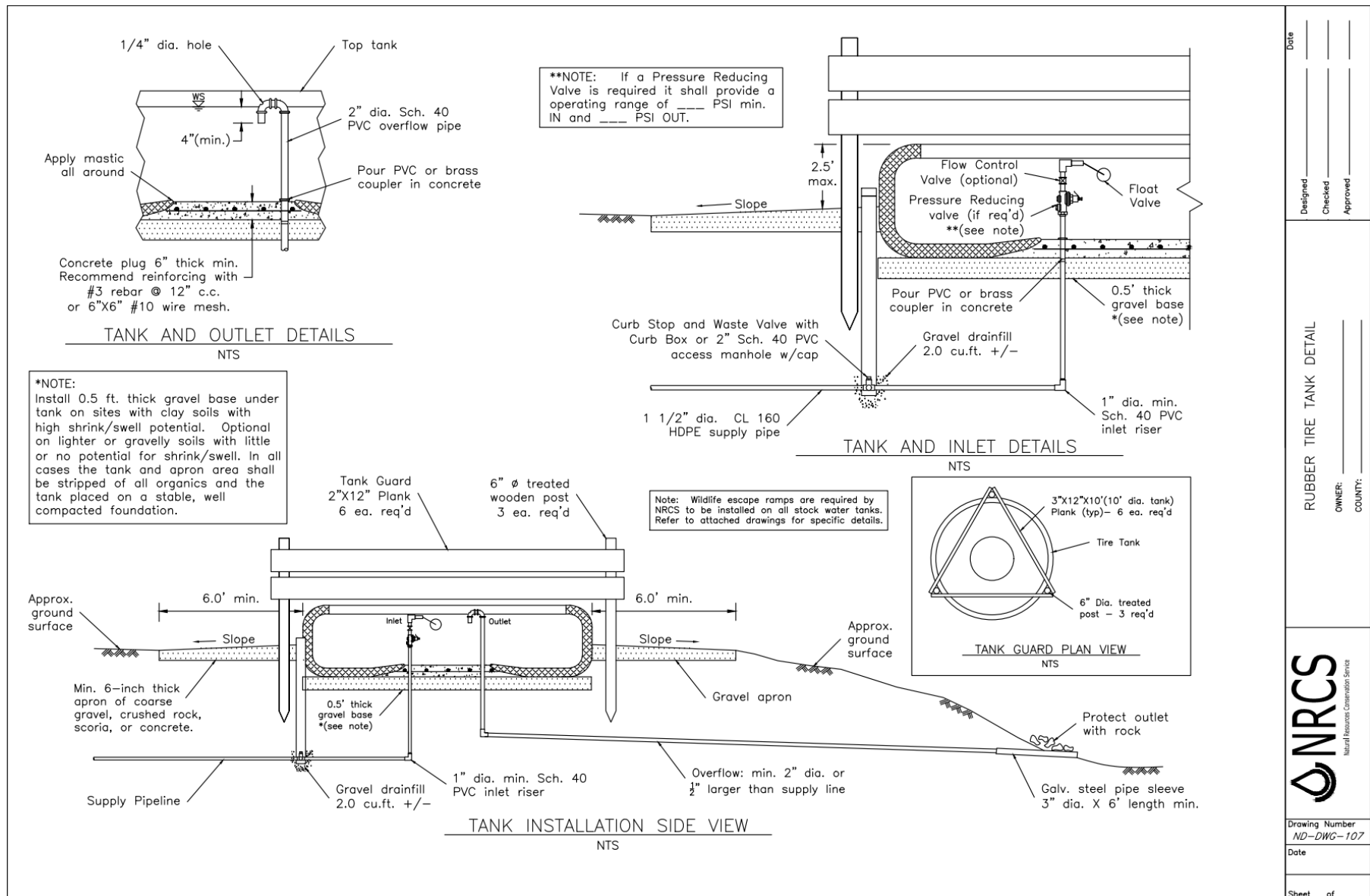


Figure 10. Tire Tank Details, NRCS ND-107. (Refer to Figure 12 for Inlet & Outlet)

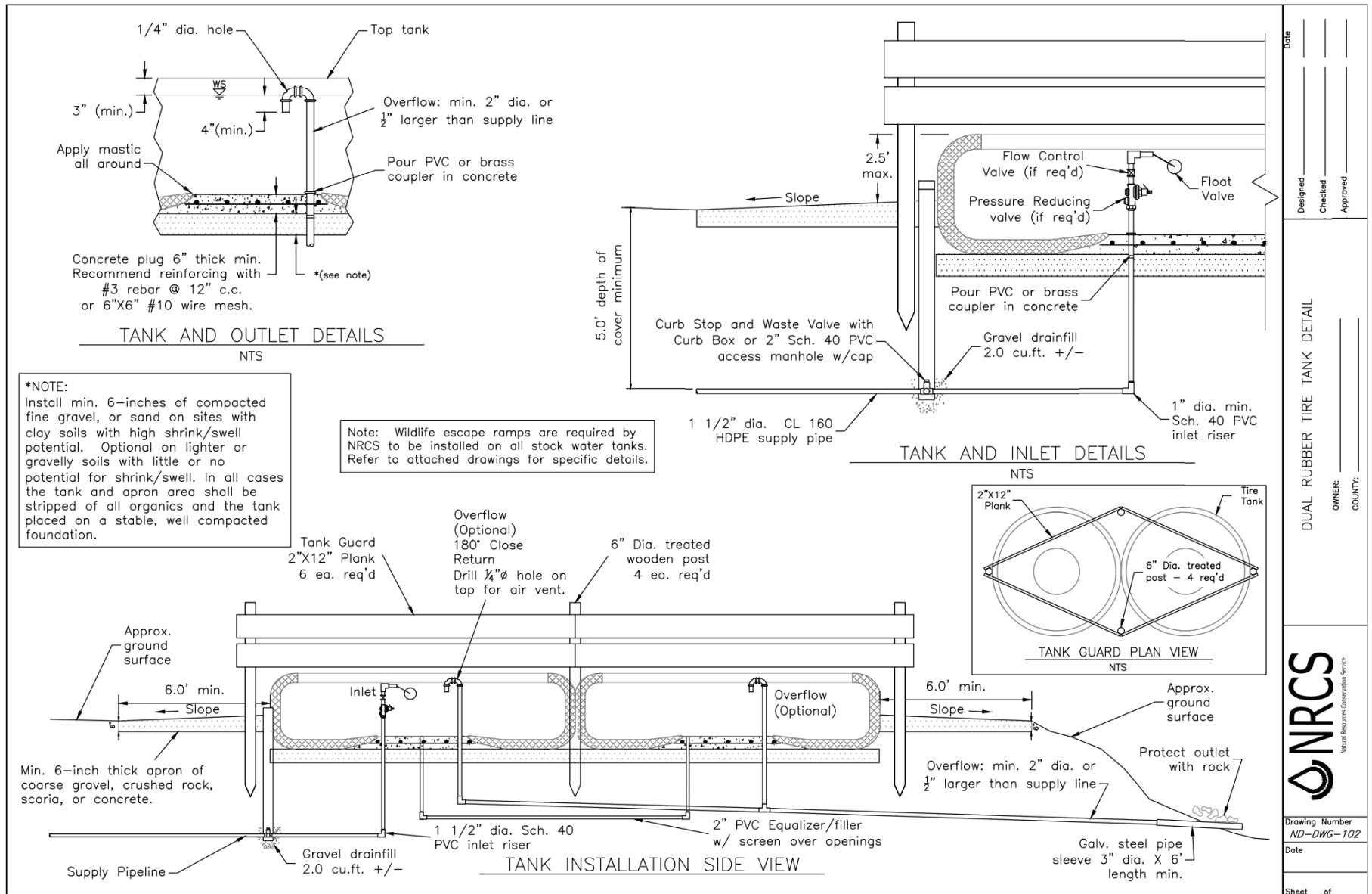


Figure 11. Dual Tire Tank Details, NRCS ND-102. (Refer to Figure 12 for Inlet & Outlet)

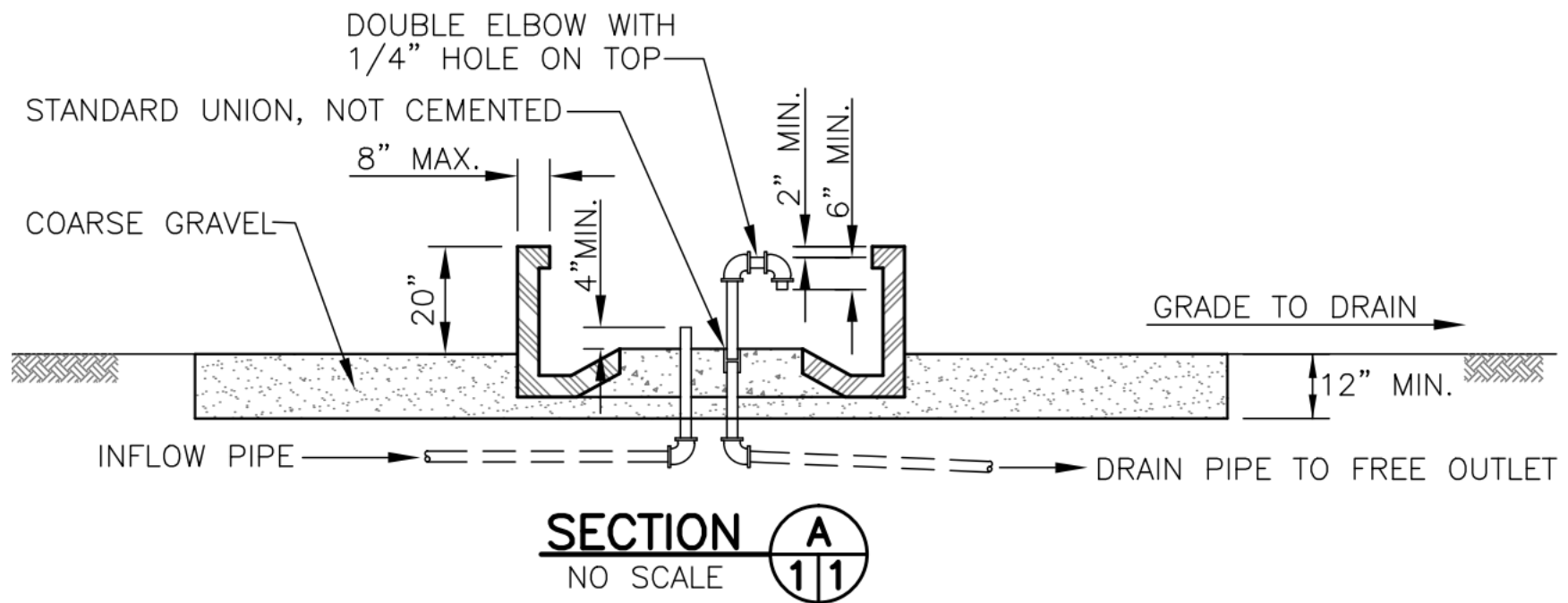
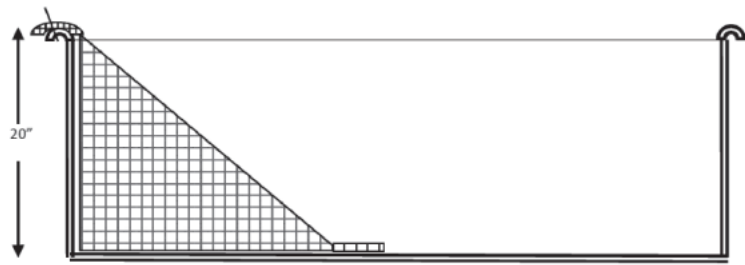
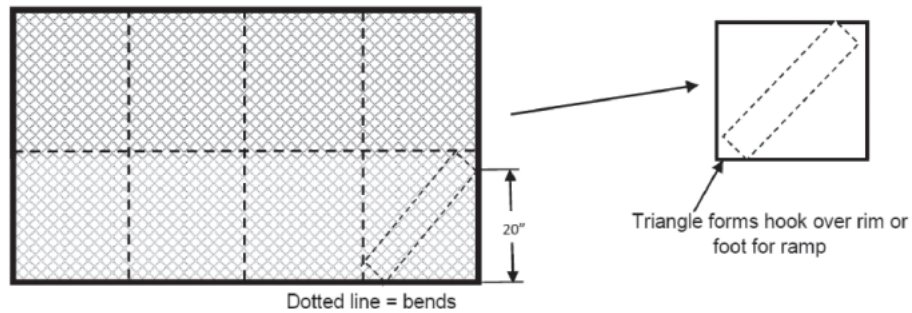


Figure 12: Inlet and Outlet specifications, along with Max trough height or 20" and top wall width 8".
NRCS Heavy Equipment Tire Trough.



Side View: escape ramp in trough showing upper triangle bent over rim and lower triangle bent to form a foot to contact the trough floor.



Cutting Example Diagram: an 8' x 4' sheet of expanded metal can be cut into 8 - 2'x2' squares and bent along dotted lines as indicated in lower right square to form the ramp for a trough 20 inches deep.

Figure 13: Wildlife Escapement Ramp Diagram, NRCS 2012. [reference #1](#), [reference #2](#).

Materials Details & Specifics:

- Supply Pipe & Overflow Plumbing:
 - ~200 feet, 1.5" Schedule 40 PVC
 - (~25) 1.5" couplers
 - (2) 1.5" 90-degree elbows
 - ~250 feet, 2" Schedule 40 PVC
 - (~30) 2" couplers
 - (7) 2" 90-degree elbows
 - (1) 2" T-joint
 - (2) 3"x6' galvanized steel pipe
 - Adhesive, glue, etc
 - Follow Figure 12 for Inlet & Outlet specifics
 - The following items in Figure 10 & 11 are **NOT REQUIRED**: curb stop, waste valve, pressure reducing valve, flow control valve, and float valve
- Cattle Troughs:
 - (2) new 6-8 foot Tire Troughs, (used tires in sound condition to hold water are acceptable)
 - Max height of troughs 20" from ground
 - ~10 Cubic ft. of Concrete
 - Gravel: ~22 Cubic yards
 - (3) 6" trough bases
 - (3) 6'x6" gravel apron
- Wildlife Escapement Ramps:
 - (1) 4'x4' sheet expanded metal
 - For fabrication and installation instructions use [reference #1](#) or [reference #2](#).
- Tank Guards:
 - (7) 8'x6" diameter pressure treated wooden posts
 - (14) 2"x12"x10' pressure treated or rough cut lumber
 - Lag bolts and screws
- Fencing Supplies:
 - ~750 feet smooth-wire
 - ~2,250 feet barbwire
 - ~60 T-post, 6' minimum
 - (~6) Brace posts:
 - (12) concrete footing blocks
 - (6) concrete post footing
 - (6) brace posts
 - (12) brace rails
 - (6) post caps
 - (12) brace band
 - (250) fence visibility indicators